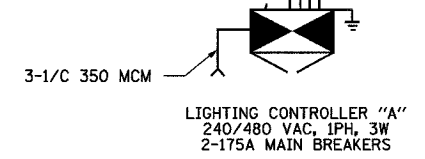
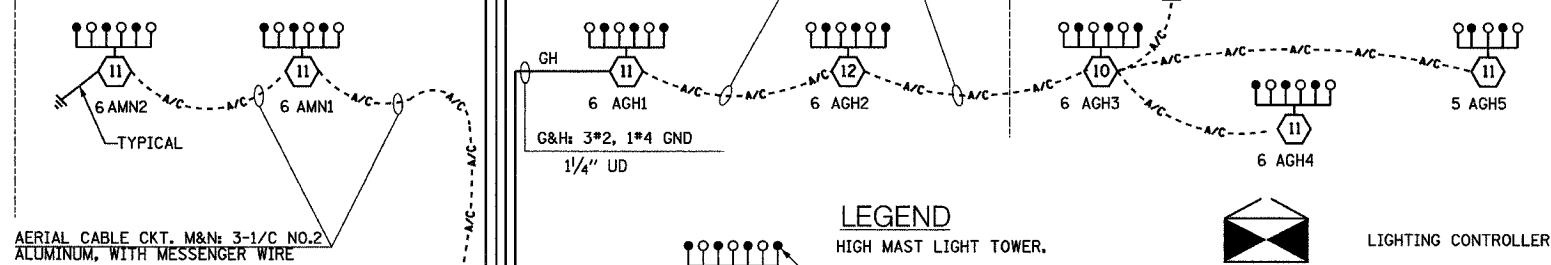
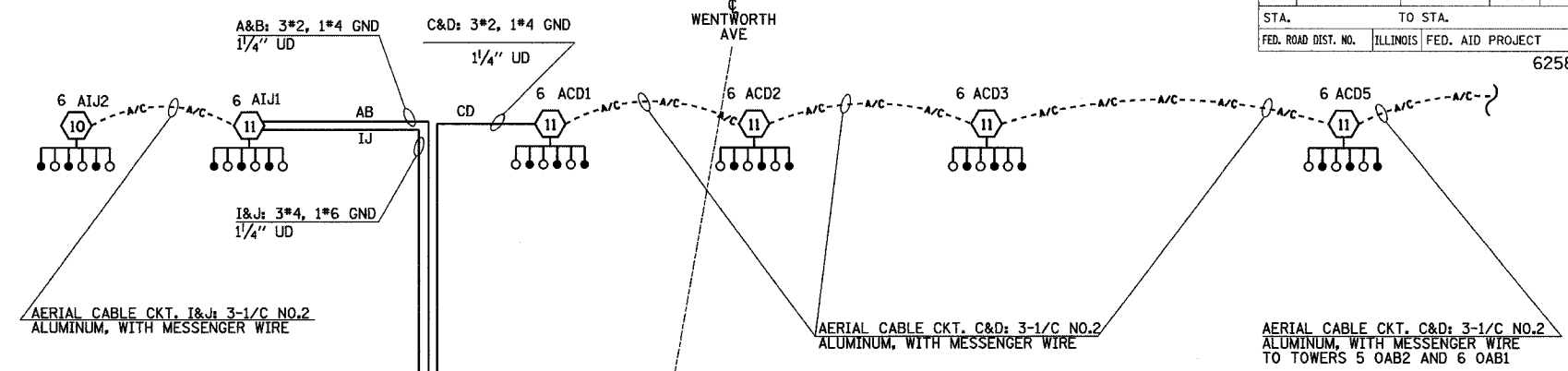


C & W.I.
R.R.

WENTWORTH
AVE

WB ←
I-57
EB →



LEGEND

- HIGH MAST LIGHT TOWER.
- 400 W. HPS LUMINAIRE (BLACK PHASE-SOLID SYMBOL, RED PHASE-OPEN SYMBOL)
- HIGH MAST TOWER DESIGNATION.
- LIGHTED SIGN STRUCTURE WITH 170 W. FLUORESCENT LUMINAIRES, QUANTITY OF LUMINAIRES AS REQUIRED. (BLACK PHASE-SOLID SYMBOL, RED PHASE, OPEN SYMBOL)
- 3 POLE SAFETY SWITCH
- UNDERPASS LIGHTING UNIT, 70W HPS LUMINAIRE. (BLACK PHASE- SOLID SYMBOL, RED PHASE-OPEN SYMBOL)
- LIGHTING CONTROLLER
- GROUND FIELD
- ELECTRIC UTILITY SERVICE
- ECA
- CONVENTIONAL LIGHTING UNIT, 310 WATT HPS LUMINAIRE. (BLACK PHASE-SOLID SYMBOL, RED PHASE-OPEN SYMBOL)

**SINGLE LINE DIAGRAM
LIGHTING CONTROLLER "A"**

NOTES:
1. SEE DRAWING ME-12 FOR WIRING DIAGRAM DETAILS

CIRCUIT	RED PHASE		BLACK PHASE	
	AMPS	WATTS	AMPS	WATTS
A			B	
C	36.0	8,640	D	34.0 8,160
E			F	
G	31.8	7,632	H	29.8 7,152
I	12.0	2,880	J	12.0 2,880
K			L	
M	12.0	2,880	N	12.0 2,880
O			P	
TOTAL	91.8	22,032	TOTAL	87.8 21,072

SINGH
SINGH & ASSOCIATES, INC.
CONSULTING ENGINEERS

300 W. ADAMS ST.
CHICAGO, IL 60606
TEL: (312) 629-0240
FAX: (312) 629-8448

REVISIONS	
NAME	DATE

ILLINOIS DEPARTMENT OF TRANSPORTATION
F.A.I. 90/94 (DAN RYAN EXPRESSWAY)
31st STREET TO I-57

**SINGLE LINE DIAGRAM
LIGHTING CONTROLLER "A"
PROPOSED IMPROVEMENTS 2005**

SCALE: NOT TO SCALE
DATE: OCTOBER 29, 2004

DRAWN BY: YJ
CHECKED BY: TM

SL05-01

11/23/2004 2:24:02 PM