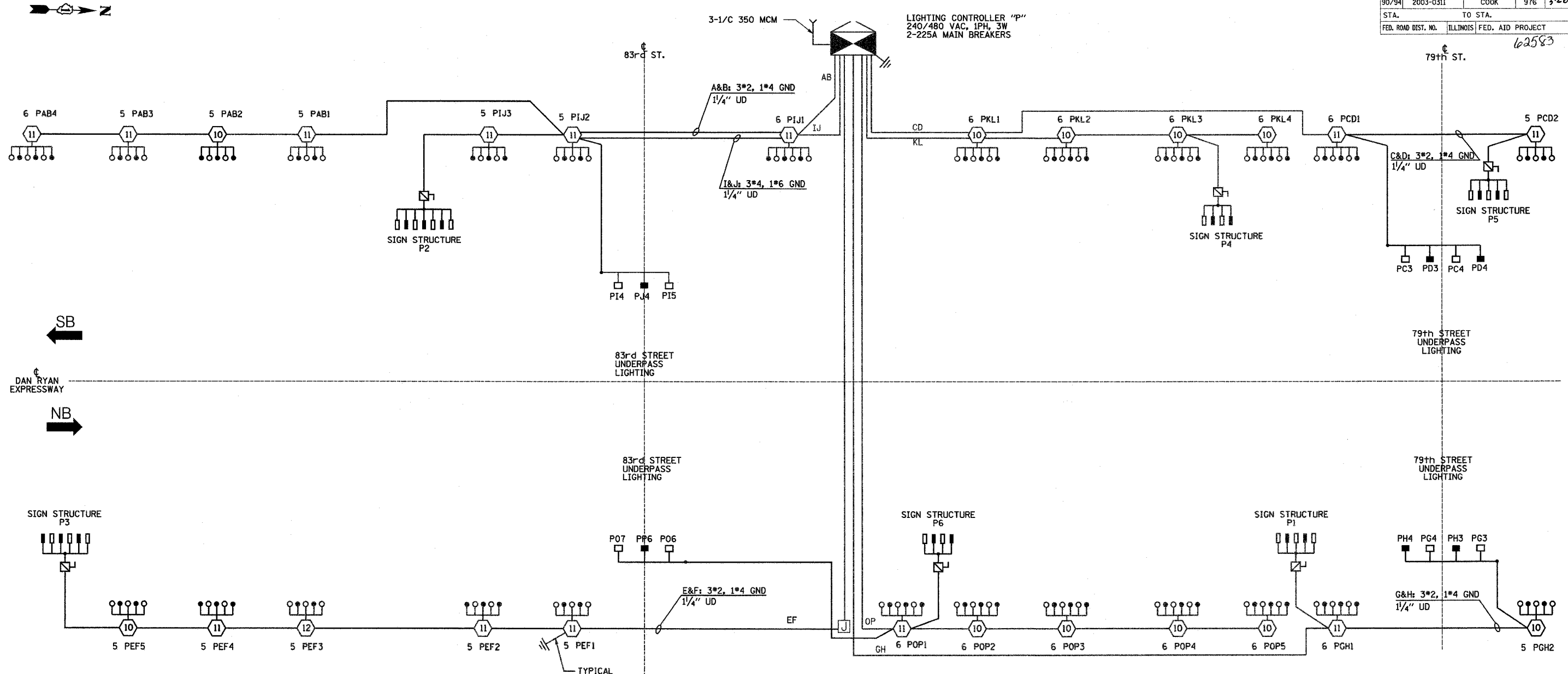


F.A.I. RTE.	SECTION	COUNTY	TOTAL SHEET NO.
90/94	2003-0311	COOK	976
STA.	TO STA.		NO.
			62583
FED. ROAD DIST. NO.	ILLINOIS	FED. AID PROJECT	



**SINGLE LINE DIAGRAM  
LIGHTING CONTROLLER "P"**

NOTES:  
1. SEE DRAWING ME-12 FOR WIRING DIAGRAM DETAILS.

- LEGEND**
- HIGH MAST LIGHT TOWER.
  - 400 W. HPS LUMINAIRE (BLACK PHASE-SOLID SYMBOL, RED PHASE-OPEN SYMBOL)
  - HIGH MAST TOWER DESIGNATION.
  - LIGHTED SIGN STRUCTURE WITH 170 W. FLUORESCENT LUMINAIRES, AS REQUIRED. (BLACK PHASE-SOLID SYMBOL, RED PHASE, OPEN SYMBOL)
  - 3 POLE SAFETY SWITCH
  - UNDERPASS LIGHTING UNIT, 70W HPS LUMINAIRE. (BLACK PHASE- SOLID SYMBOL, RED PHASE-OPEN SYMBOL)
  - LIGHTING CONTROLLER
  - GROUND FIELD
  - ELECTRIC UTILITY SERVICE

LOAD TABLE LIGHTING CONTROLLER "P"					
CIRCUIT	RED PHASE		BLACK PHASE		CIRCUIT
	AMPS	WATTS	AMPS	WATTS	
A	22.0	5,280	B	20.0	4,800
C	15.4	3,696	D	12.6	3,024
E	28.6	6,864	F	26.6	6,384
G	12.8	3,072	H	10.8	2,592
I	20.3	4,872	J	19.0	4,560
K	25.8	6,192	L	25.8	6,192
M			N		
O	31.8	7,632	P	31.8	7,632
TOTAL	156.7	37,608	TOTAL	146.6	35,184

**SINGH**  
SINGH & ASSOCIATES, INC.  
CONSULTING ENGINEERS

300 W. ADAMS ST.  
CHICAGO, IL 60606  
TEL: (312) 629-0240  
FAX: (312) 629-8449

REVISIONS	
NAME	DATE

ILLINOIS DEPARTMENT OF TRANSPORTATION  
F.A.I. 90/94 (DAN RYAN EXPRESSWAY)  
31st STREET TO I-57

**SINGLE LINE DIAGRAM  
LIGHTING CONTROLLER "P"  
PROPOSED IMPROVEMENTS 2006**

SCALE: NOT TO SCALE      DRAWN BY: YJ  
DATE: OCTOBER 29, 2004      CHECKED BY: TM

10/21/2004 8:52:44 PM