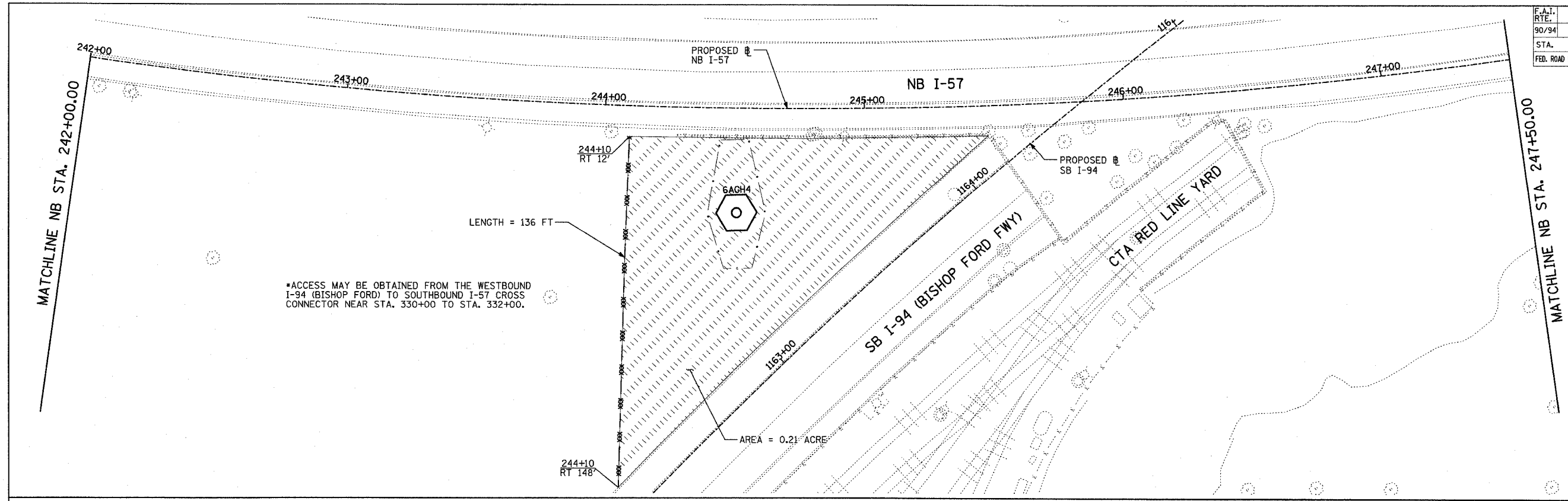
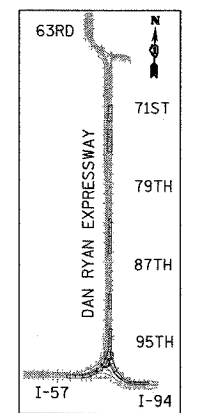
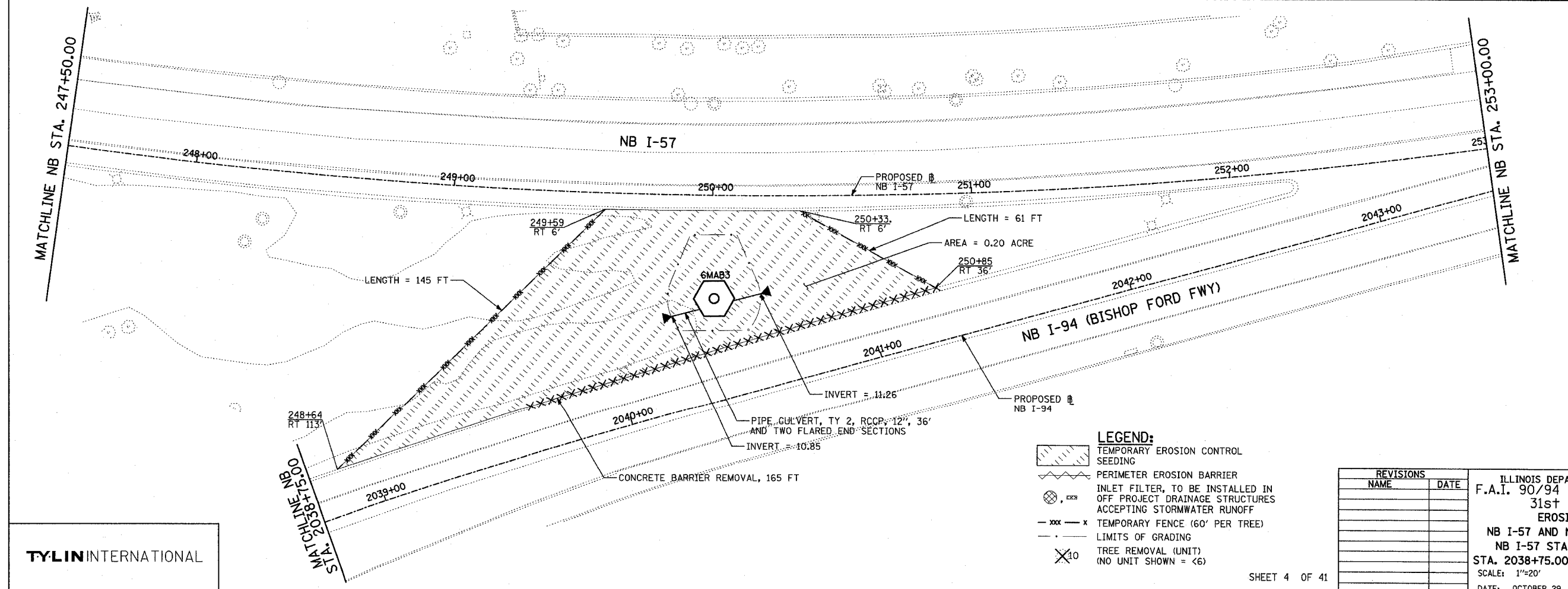


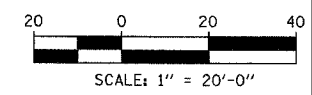
F.A.I. RTE.	SECTION	COUNTY	TOTAL SHEETS	SHEET NO.
90/94	2003-0311	COOK	476	415
STA.		TO STA.		
FED. ROAD DIST. NO.		ILLINOIS FED. AID PROJECT		
		62583		



*ACCESS MAY BE OBTAINED FROM THE WESTBOUND I-94 (BISHOP FORD) TO SOUTHBOUND I-57 CROSS CONNECTOR NEAR STA. 330+00 TO STA. 332+00.



LOCATION MAP



- LEGEND:**
- TEMPORARY EROSION CONTROL SEEDING
 - PERIMETER EROSION BARRIER
 - INLET FILTER, TO BE INSTALLED IN OFF PROJECT DRAINAGE STRUCTURES ACCEPTING STORMWATER RUNOFF
 - TEMPORARY FENCE (60' PER TREE)
 - LIMITS OF GRADING
 - TREE REMOVAL (UNIT) (NO UNIT SHOWN = <6)

REVISIONS	
NAME	DATE

ILLINOIS DEPARTMENT OF TRANSPORTATION
 F.A.I. 90/94 (DAN RYAN EXPRESSWAY)
 31st STREET to I-57
 EROSION CONTROL PLAN
 NB I-57 AND NB-I-94 (BISHOP FORD FWY)
 NB I-57 STA. 242+00.00 AND NB I-94
 STA. 2038+75.00 TO NB I-57 STA. 253+00.00
 SCALE: 1"=20' DRAWN BY: RTM, JPA
 DATE: OCTOBER 29, 2004 CHECKED BY: JPM, MAG

10/22/2004 10:55:52 AM