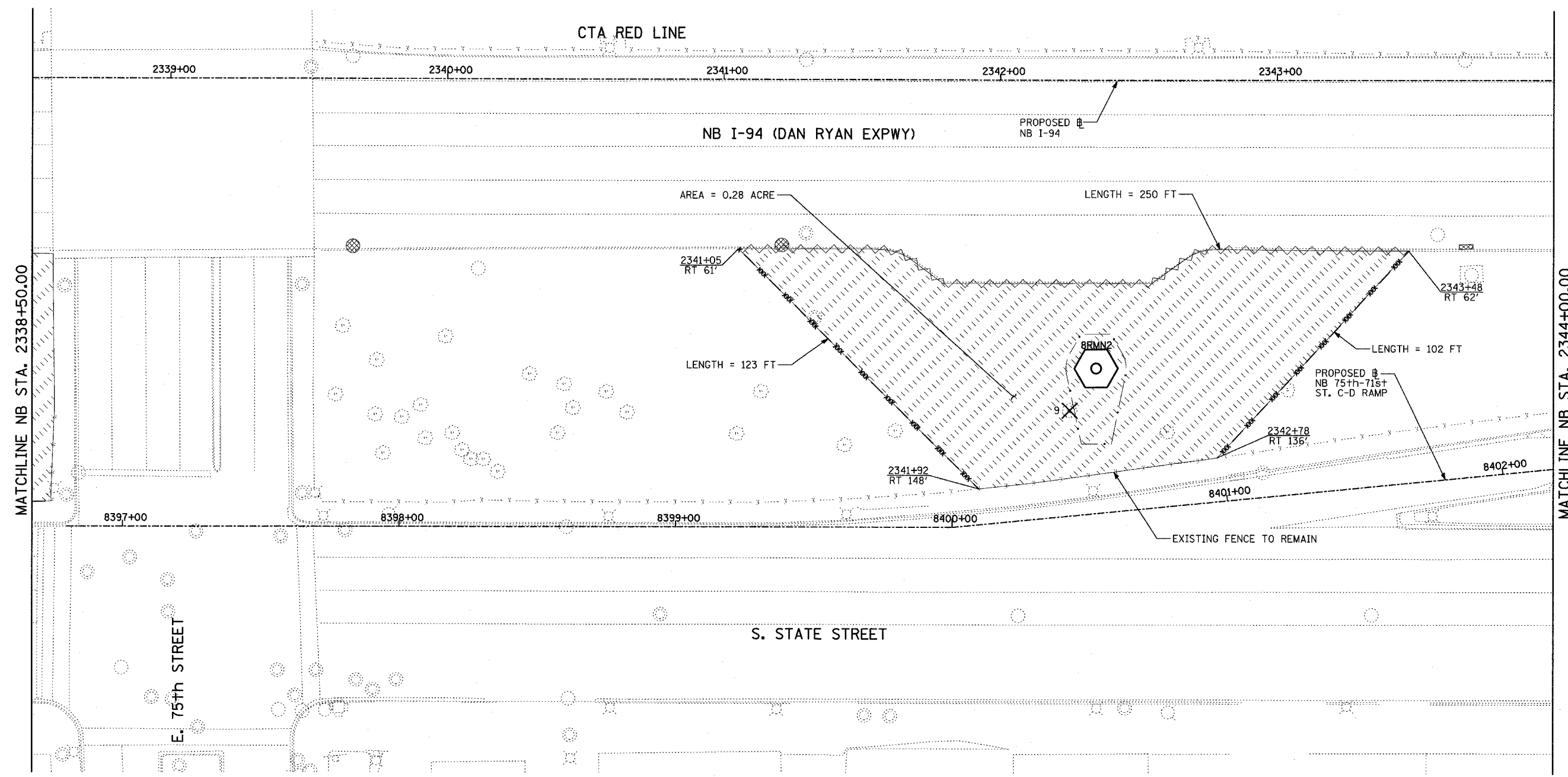
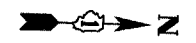


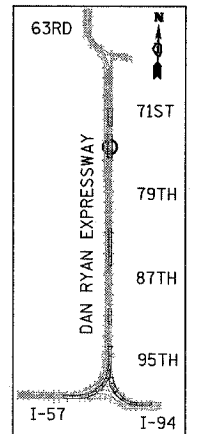
F.A.I. RTE.	SECTION	COUNTY	TOTAL SHEETS	SHEET NO.
90/94	2003-0311	COOK	976	422
STA.		TO STA.		
FED. ROAD DIST. NO.		ILLINOIS FED. AID PROJECT		

62583

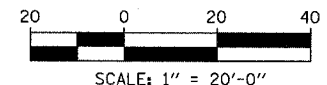


MATCHLINE NB STA. 2338+50.00

MATCHLINE NB STA. 2344+00.00



LOCATION MAP



- LEGEND:**
- TEMPORARY EROSION CONTROL SEEDING
  - PERIMETER EROSION BARRIER
  - INLET FILTER, TO BE INSTALLED IN OFF PROJECT DRAINAGE STRUCTURES ACCEPTING STORMWATER RUNOFF
  - TEMPORARY FENCE (60' PER TREE)
  - LIMITS OF GRADING
  - TREE REMOVAL (UNIT) (NO UNIT SHOWN = <6)

REVISIONS	
NAME	DATE

ILLINOIS DEPARTMENT OF TRANSPORTATION  
 F.A.I. 90/94 (DAN RYAN EXPRESSWAY)  
 31st STREET to I-57  
 EROSION CONTROL PLAN  
 NB 75th TO 71st STREET RAMP  
 NB I-94 STA. 2338+50.00 TO 2344+00.00

SCALE: 1"=20'  
 DATE: OCTOBER 29, 2004  
 DRAWN BY: RTM, JPA  
 CHECKED BY: JPM, MAG

SHEET 11 OF 41

**TYLIN** INTERNATIONAL