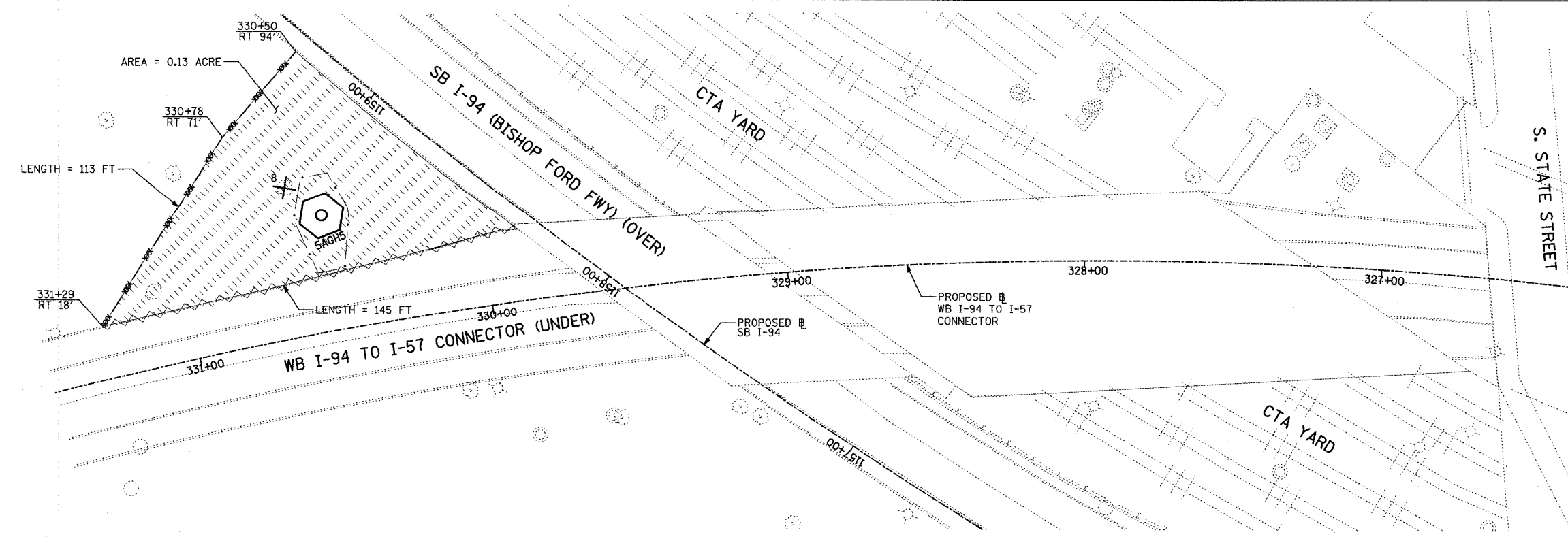
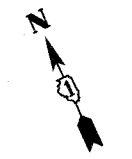
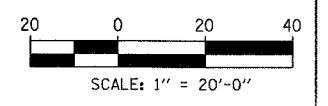
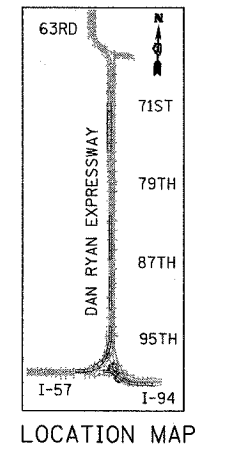
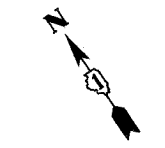
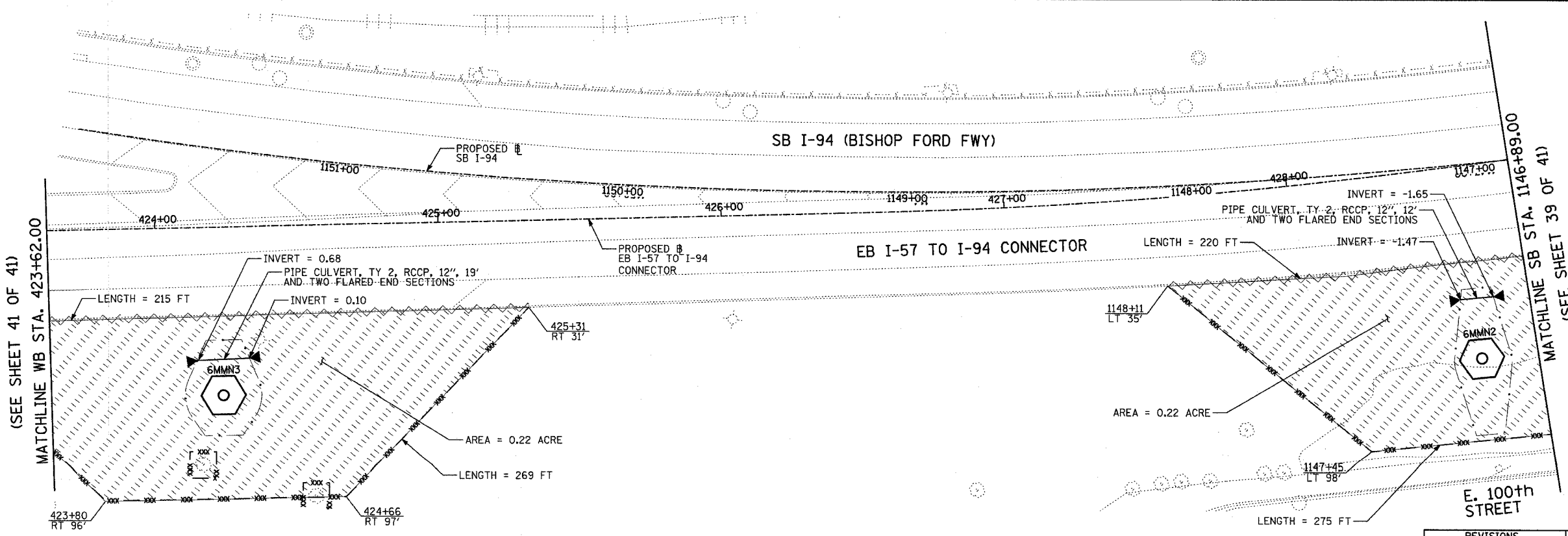


F.A.I. RT. NO.	SECTION	COUNTY	TOTAL SHEETS NO.	SHEET NO.
90/94	2003-0311	COOK	476	461
STA.		TO STA.		
FED. ROAD DIST. NO.		ILLINOIS FED. AID PROJECT		
		62583		



- LEGEND:**
- TEMPORARY EROSION CONTROL SEEDING
  - PERIMETER EROSION BARRIER
  - INLET FILTER, TO BE INSTALLED IN OFF PROJECT DRAINAGE STRUCTURES ACCEPTING STORMWATER RUNOFF
  - TEMPORARY FENCE (60' PER TREE)
  - LIMITS OF GRADING
  - TREE REMOVAL (UNIT) (NO UNIT SHOWN = <6)



REVISIONS	
NAME	DATE

ILLINOIS DEPARTMENT OF TRANSPORTATION  
 F.A.I. 90/94 (DAN RYAN EXPRESSWAY)  
 31st STREET TO I-57  
 EROSION CONTROL PLAN  
 WB I-94 TO I-57 CONNECTOR  
 EB I-57 TO I-94 CONNECTOR  
 EB STA. 423+62.00 TO SB STA. 1146+89.00  
 SCALE: 1"=20' DRAWN BY: RTM, JPA  
 DATE: OCTOBER 29, 2004 CHECKED BY: JPM, MAG

**TYLIN** INTERNATIONAL

10/29/2004 10:23:51 AM