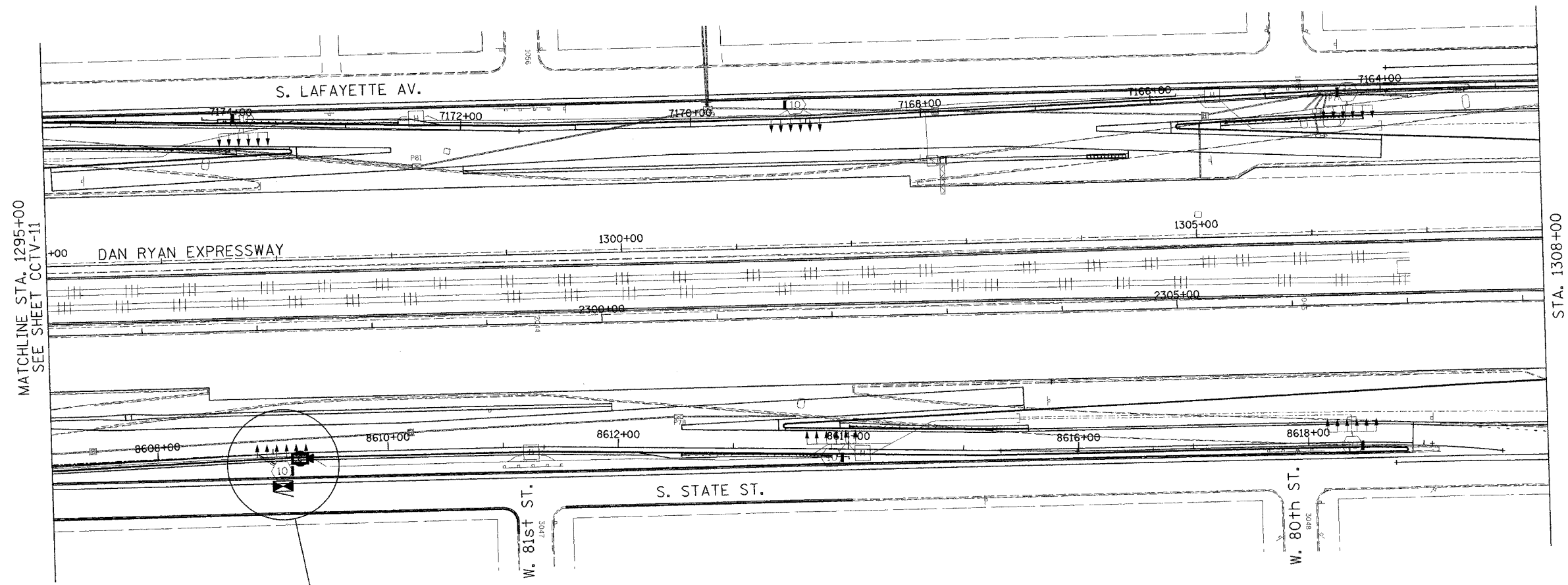
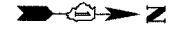
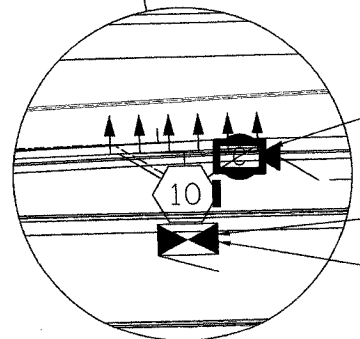


SECTION	COUNTY	TOTAL SHEETS	SHEET NO.
2003-0311	COOK	976	684
STA. 1295+00 TO STA. 1308+00			
FED. ROAD DIST. NO.	ILLINOIS	FED. AID PROJECT	
62583			



MATCHLINE STA. 1295+00  
SEE SHEET CCTV-11

STA. 1308+00

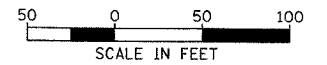


INSTALL AND CONNECT CCTV CAMERA SYSTEM ON HIGH-MAST LIGHT TOWER RING (NOTE 4, 5)

INSTALL AND CONNECT CCTV CABINET EQUIPMENT IN CCTV CABINET DR-9A

CCTV CABINET DR-9A (BY OTHERS) TOWER NO. POP3

- NOTES:**
1. SEE DRAWINGS ME-01 AND ME-02 FOR ELECTRICAL SYMBOLS AND ABBREVIATIONS.
  2. UNLESS OTHERWISE STATED, ALL NOTED CABLE AND CONDUIT TO BE FURNISHED AND INSTALLED UNDER THIS CONTRACT.
  3. THIS SHEET ONLY DEPICTS INSTALLATION OF CLOSED CIRCUIT TELEVISION ELEMENTS. SEE LIGHTING PLANS FOR LIGHTING ELEMENT INSTALLATION.
  4. SEE DRAWING DT-17 FOR CCTV CAMERA MOUNTING DETAILS ON A HIGH-MAST LIGHT TOWER.
  5. SEE DRAWING COMM-17 FOR CCTV COMMUNICATIONS SYSTEM CONDUIT AND CABLE LAYOUT.



CCTV-12

**Edwards AND Kelcey**  
ONE NORTH FRANKLIN  
CHICAGO, IL 60606  
PHONE: (312) 251-3000  
FAX: (312) 251-3015  
WEB: WWW.EKCORP.COM

REVISIONS	
NAME	DATE

ILLINOIS DEPARTMENT OF TRANSPORTATION  
F.A.I. 94/90 (DAN RYAN EXPRESSWAY)  
31st STREET TO I-57  
CLOSED CIRCUIT TELEVISION  
SITE LAYOUT  
CAMERA DR-9A  
(SHEET 2 OF 2)  
SCALE: 1"=50'  
DATE: October 29, 2004  
DRAWN BY: DHI  
CHECKED BY: MJL

PA:030009.035\is\cadd\cctv\020122.asn 10/14/2004 09:23:07 AM