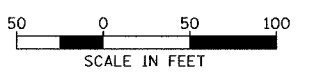
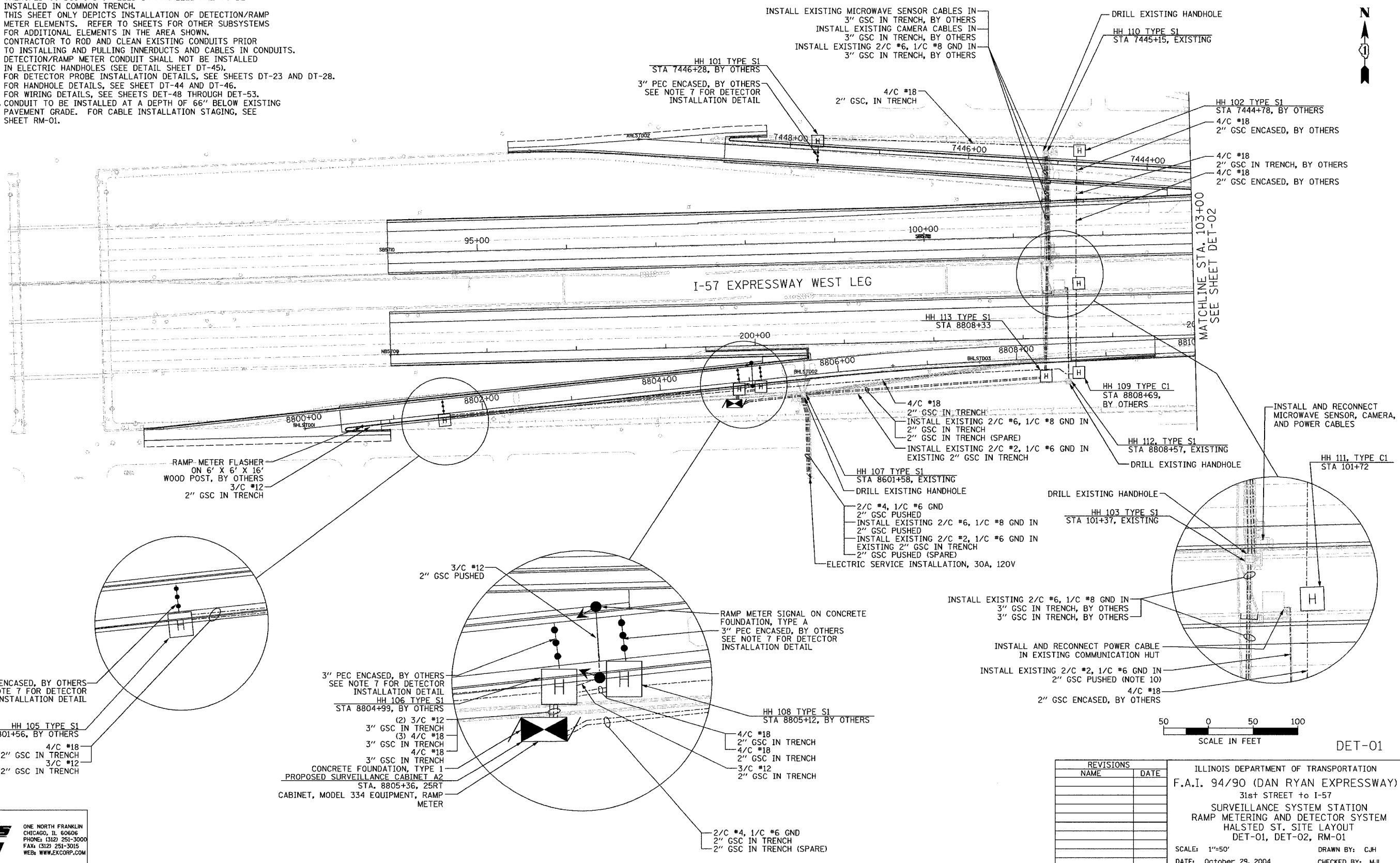


SECTION	COUNTY	TOTAL SHEETS	SHEET NO.
2003-0311	COOK	976	714
STA. 103+00.00	TO STA. 103+00.00		
FED. ROAD DIST. NO.	ILLINOIS	FED. AID PROJECT	
		62583	

NOTES:

- SEE DRAWING ME-01 AND ME-02 FOR ELECTRICAL SYSTEMS AND ABBREVIATIONS.
- UNLESS OTHERWISE STATED, ALL NOTED CABLE AND CONDUIT TO BE FURNISHED AND INSTALLED UNDER THIS CONTRACT.
- TRENCHED CONDUITS INSTALLED IN PARALLEL ARE TO BE INSTALLED IN COMMON TRENCH.
- THIS SHEET ONLY DEPICTS INSTALLATION OF DETECTION/RAMP METER ELEMENTS. REFER TO SHEETS FOR OTHER SUBSYSTEMS FOR ADDITIONAL ELEMENTS IN THE AREA SHOWN.
- CONTRACTOR TO ROD AND CLEAN EXISTING CONDUITS PRIOR TO INSTALLING AND PULLING INNERDUCTS AND CABLES IN CONDUITS.
- DETECTION/RAMP METER CONDUIT SHALL NOT BE INSTALLED IN ELECTRIC HANDHOLES (SEE DETAIL SHEET DT-45).
- FOR DETECTOR PROBE INSTALLATION DETAILS, SEE SHEETS DT-23 AND DT-28.
- FOR HANDHOLE DETAILS, SEE SHEET DT-44 AND DT-46.
- FOR WIRING DETAILS, SEE SHEETS DET-48 THROUGH DET-53.
- CONDUIT TO BE INSTALLED AT A DEPTH OF 66" BELOW EXISTING PAVEMENT GRADE. FOR CABLE INSTALLATION STAGING, SEE SHEET RM-01.



DET-01

REVISIONS		NAME	DATE
NO.	DESCRIPTION		

ILLINOIS DEPARTMENT OF TRANSPORTATION
 F.A.I. 94/90 (DAN RYAN EXPRESSWAY)
 31st STREET to I-57
 SURVEILLANCE SYSTEM STATION
 RAMP METERING AND DETECTOR SYSTEM
 HALSTED ST. SITE LAYOUT
 DET-01, DET-02, RM-01

SCALE: 1"=50'
 DATE: October 29, 2004
 DRAWN BY: CJH
 CHECKED BY: MJL

**Edwards
AND Kelcey**
 ONE NORTH FRANKLIN
 CHICAGO, IL 60606
 PHONE: (312) 251-3000
 FAX: (312) 251-3015
 WEB: WWW.EKCORP.COM

11/22/2004 04:49:45 PM P:\030019\0311\Vis\cadd\62583\DET-01.dwg