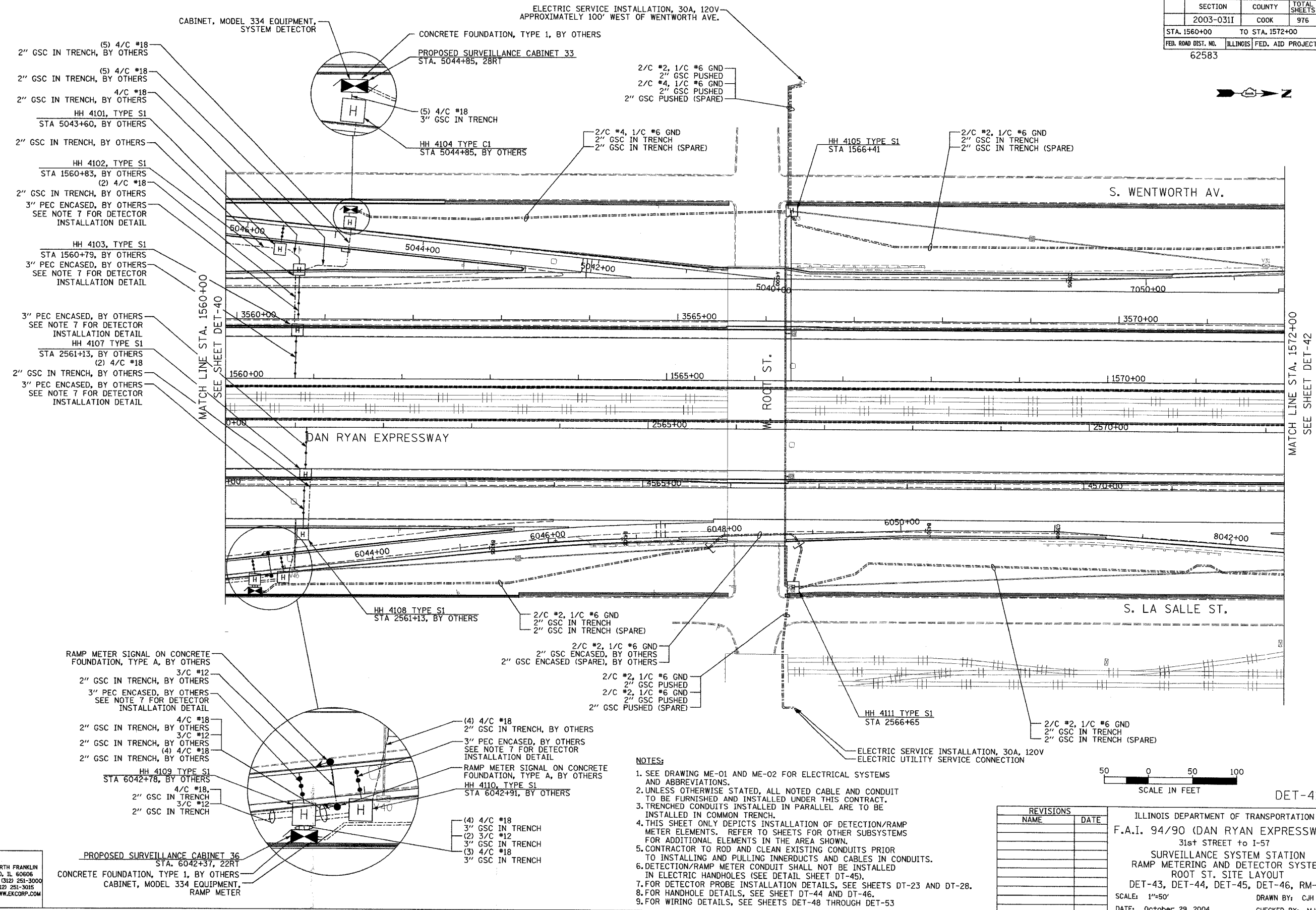


| | | | |
|------------------------------|--------|---------------------------|-----------|
| SECTION | COUNTY | TOTAL SHEETS | SHEET NO. |
| 2003-031I | COOK | 976 | 754 |
| STA. 1560+00 TO STA. 1572+00 | | ILLINOIS FED. AID PROJECT | |
| FED. ROAD DIST. NO. 62583 | | | |



- (5) 4/C #18
2" GSC IN TRENCH, BY OTHERS
- (5) 4/C #18
2" GSC IN TRENCH, BY OTHERS
- 4/C #18
2" GSC IN TRENCH, BY OTHERS
- HH 4101, TYPE S1
STA 5043+60, BY OTHERS
- 2" GSC IN TRENCH, BY OTHERS
- HH 4102, TYPE S1
STA 1560+83, BY OTHERS
(2) 4/C #18
- 2" GSC IN TRENCH, BY OTHERS
- 3" PEC ENCASED, BY OTHERS
SEE NOTE 7 FOR DETECTOR
INSTALLATION DETAIL
- HH 4103, TYPE S1
STA 1560+79, BY OTHERS
3" PEC ENCASED, BY OTHERS
SEE NOTE 7 FOR DETECTOR
INSTALLATION DETAIL
- 3" PEC ENCASED, BY OTHERS
SEE NOTE 7 FOR DETECTOR
INSTALLATION DETAIL
- HH 4107, TYPE S1
STA 2561+13, BY OTHERS
(2) 4/C #18
- 2" GSC IN TRENCH, BY OTHERS
- 3" PEC ENCASED, BY OTHERS
SEE NOTE 7 FOR DETECTOR
INSTALLATION DETAIL

- RAMP METER SIGNAL ON CONCRETE
FOUNDATION, TYPE A, BY OTHERS
- 3/C #12
2" GSC IN TRENCH, BY OTHERS
- 3" PEC ENCASED, BY OTHERS
SEE NOTE 7 FOR DETECTOR
INSTALLATION DETAIL
- 4/C #18
2" GSC IN TRENCH, BY OTHERS
- 3/C #12
2" GSC IN TRENCH, BY OTHERS
- (4) 4/C #18
2" GSC IN TRENCH, BY OTHERS
- HH 4109, TYPE S1
STA 6042+78, BY OTHERS
- 4/C #18
2" GSC IN TRENCH
- 3/C #12
2" GSC IN TRENCH

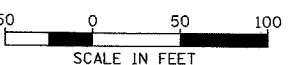
PROPOSED SURVEILLANCE CABINET 36
STA. 6042+37, 22RT
CONCRETE FOUNDATION, TYPE 1, BY OTHERS
CABINET, MODEL 334 EQUIPMENT,
RAMP METER

- (4) 4/C #18
2" GSC IN TRENCH, BY OTHERS
- 3" PEC ENCASED, BY OTHERS
SEE NOTE 7 FOR DETECTOR
INSTALLATION DETAIL
- RAMP METER SIGNAL ON CONCRETE
FOUNDATION, TYPE A, BY OTHERS
- HH 4110, TYPE S1
STA 6042+91, BY OTHERS
- (4) 4/C #18
3" GSC IN TRENCH
- (2) 3/C #12
3" GSC IN TRENCH
- (3) 4/C #18
3" GSC IN TRENCH

NOTES:

1. SEE DRAWING ME-01 AND ME-02 FOR ELECTRICAL SYSTEMS AND ABBREVIATIONS.
2. UNLESS OTHERWISE STATED, ALL NOTED CABLE AND CONDUIT TO BE FURNISHED AND INSTALLED UNDER THIS CONTRACT.
3. TRENCHED CONDUITS INSTALLED IN PARALLEL ARE TO BE INSTALLED IN COMMON TRENCH.
4. THIS SHEET ONLY DEPICTS INSTALLATION OF DETECTION/RAMP METER ELEMENTS. REFER TO SHEETS FOR OTHER SUBSYSTEMS FOR ADDITIONAL ELEMENTS IN THE AREA SHOWN.
5. CONTRACTOR TO ROD AND CLEAN EXISTING CONDUITS PRIOR TO INSTALLING AND PULLING INNERDUCTS AND CABLES IN CONDUITS.
6. DETECTION/RAMP METER CONDUIT SHALL NOT BE INSTALLED IN ELECTRIC HANDHOLES (SEE DETAIL SHEET DT-45).
7. FOR DETECTOR PROBE INSTALLATION DETAILS, SEE SHEETS DT-23 AND DT-28.
8. FOR HANDHOLE DETAILS, SEE SHEET DT-44 AND DT-46.
9. FOR WIRING DETAILS, SEE SHEETS DET-48 THROUGH DET-53

| REVISIONS | |
|-----------|------|
| NAME | DATE |
| | |
| | |
| | |
| | |
| | |



SCALE IN FEET DET-41

ILLINOIS DEPARTMENT OF TRANSPORTATION
F.A.I. 94/90 (DAN RYAN EXPRESSWAY)
31st STREET TO I-57
SURVEILLANCE SYSTEM STATION
RAMP METERING AND DETECTOR SYSTEM
ROOT ST. SITE LAYOUT
DET-43, DET-44, DET-45, DET-46, RM-18
SCALE: 1"=50'
DATE: October 29, 2004
DRAWN BY: CJH
CHECKED BY: MJL

**Edwards
AND Kelcey**
ONE NORTH FRANKLIN
CHICAGO, IL 60606
PHONE: (312) 251-3000
FAX: (312) 251-3015
WEB: WWW.EKCORP.COM

10/29/2004 04:37:51 PM