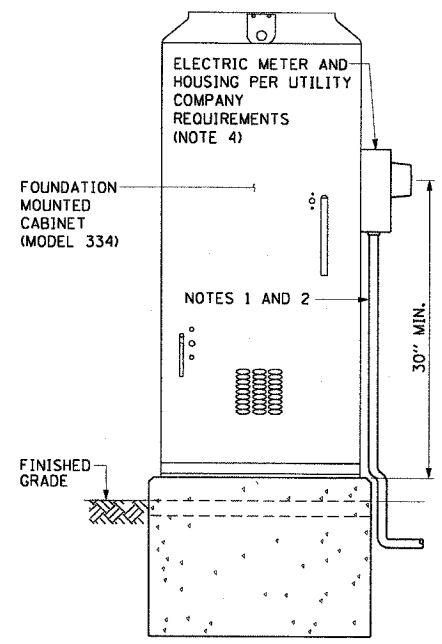


F.A.I. RTE.	SECTION	COUNTY	TOTAL SHEETS	SHEET NO.
90/94	2003-0311	COOK	976	401
STA.		TO STA.		
FED. ROAD DIST. NO. 1		ILLINOIS FED. AID PROJECT		

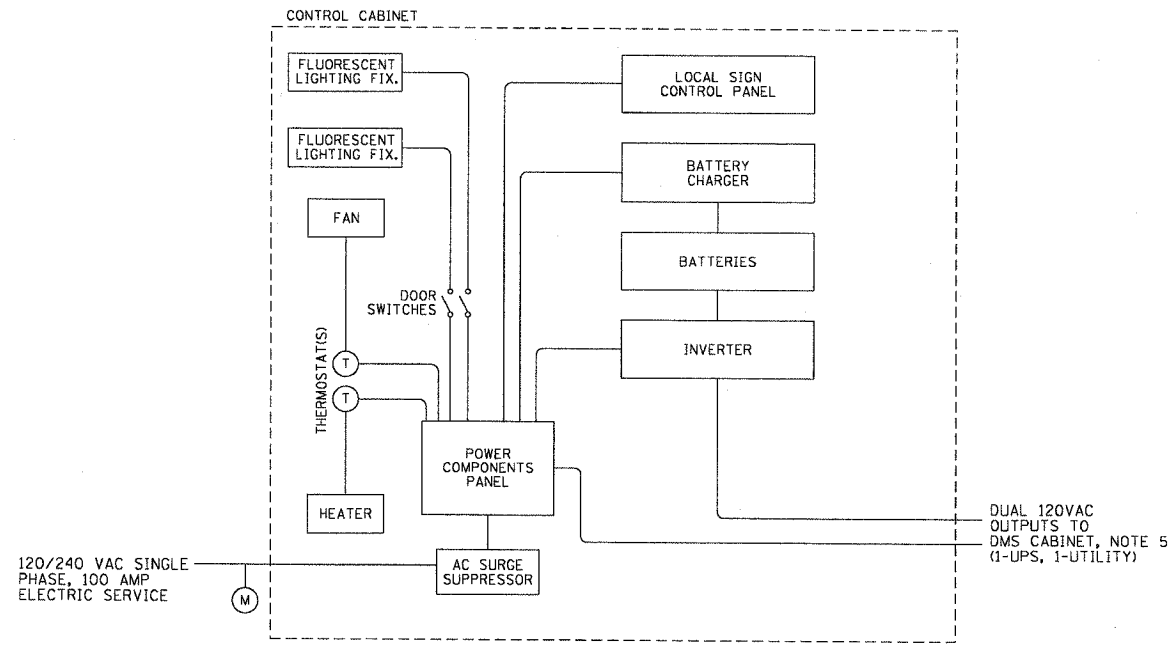
62583

NOTES:

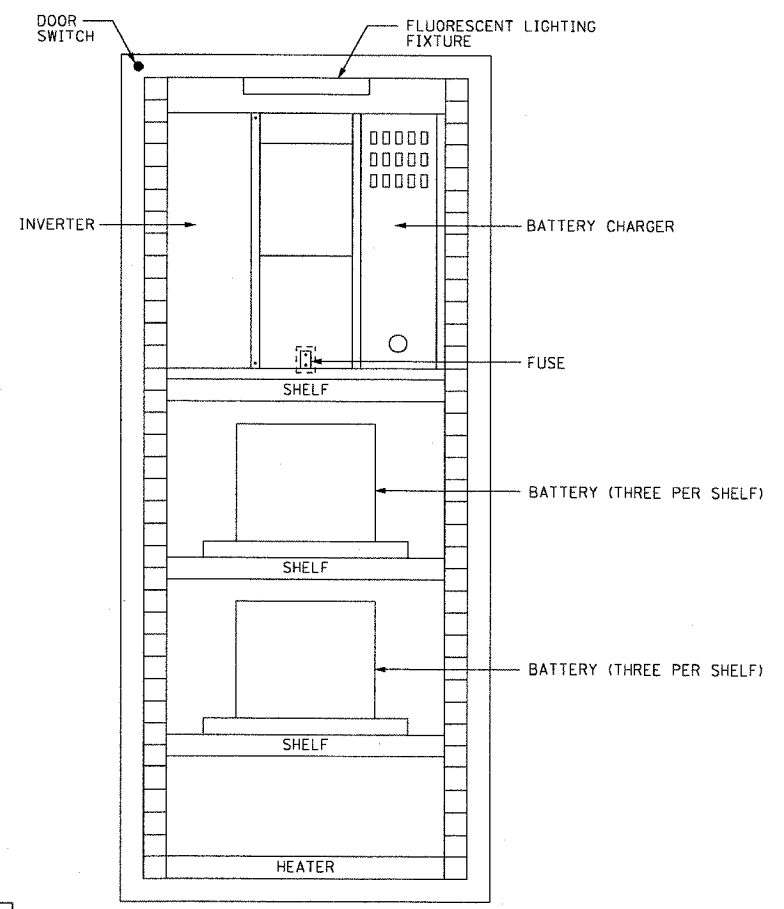
1. SEE DMS-01 THROUGH DMS-09, DYNAMIC MESSAGE SIGN SITE LAYOUT, FOR CONDUIT AND CABLE SIZES.
2. 120/240V, 1 PHASE, 3 WIRE, 100 AMP GROUNDED UTILITY SERVICE TO UTILITY SERVICE POLE.
3. SEE DRAWING DT-07 FOR WIRING DIAGRAMS.
4. METER REQUIRED ON ALL DMS-UPS CABINETS EXCEPT DMS-07 AND DMS-08.
5. SEE DRAWING DT-05 FOR CONNECTION TO DMS CONTROLLER CABINETS; SEE DRAWING DT-41 FOR DMS/SYSTEM DETECTOR SURVEILLANCE CABINETS.



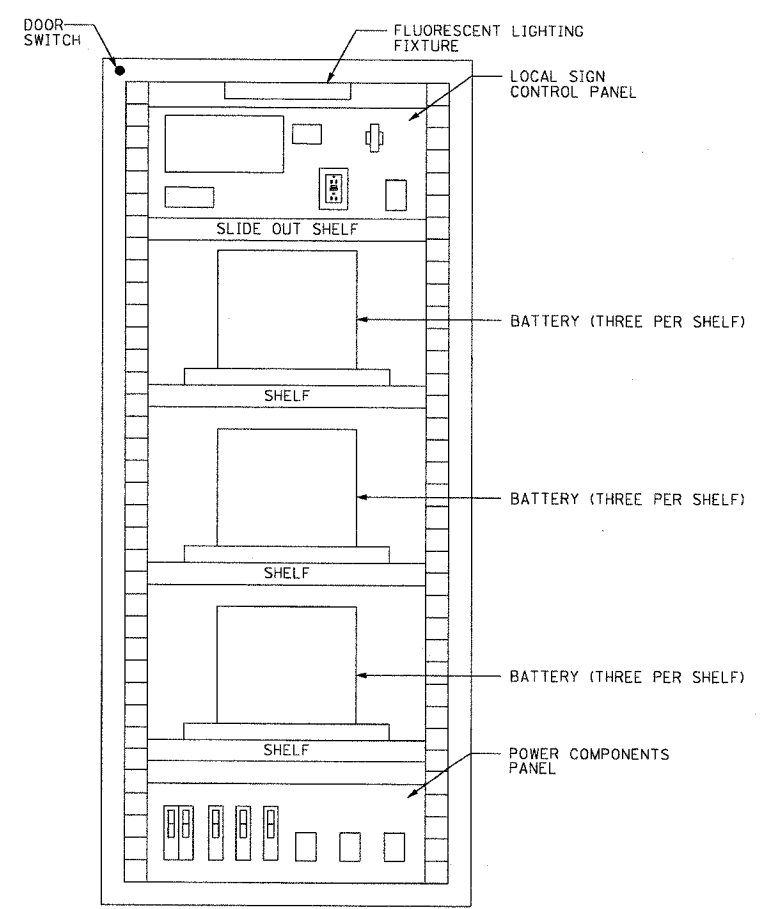
UPS CABINET FRONT VIEW (MODEL 334)



DMS UPS CABINET SINGLE LINE DIAGRAM (TYPICAL) (MODEL 334)



UPS CABINET LAYOUT FRONT VIEW (TYPICAL) (MODEL 334)



UPS CABINET LAYOUT BACK VIEW (TYPICAL) (MODEL 334)

CTE ENGINEERS
 CONSER TOWNSEND ENVIRONMENTAL ENGINEERS, INC.
 305 EAST WACKER DRIVE, SUITE 600
 CHICAGO, ILLINOIS 60601-5202, PHONE: (312) 938-0300

REVISIONS	
NAME	DATE

ILLINOIS DEPARTMENT OF TRANSPORTATION
 F.A.I. 90/94 (DAN RYAN EXPRESSWAY)
 31st STREET TO I-57

**DYNAMIC MESSAGE SIGN
 UPS CABINET DETAILS**

SCALE: NOT TO SCALE
 DATE: October 29, 2004

DRAWN BY: BHP
 CHECKED BY: BMW

DT-06

10/15/2004 09:40:56 AM