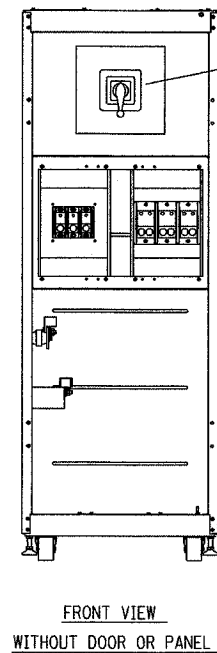
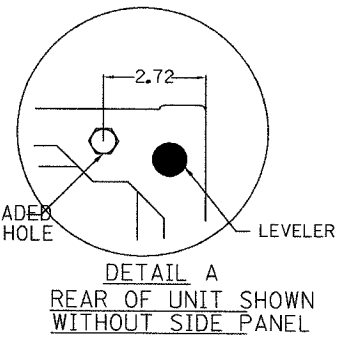
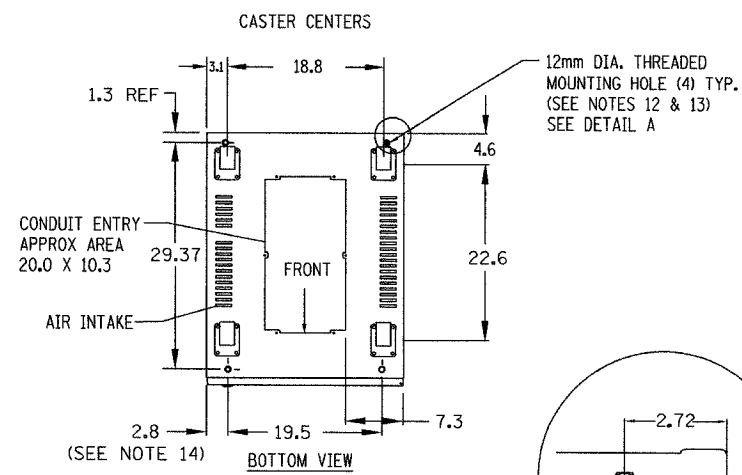
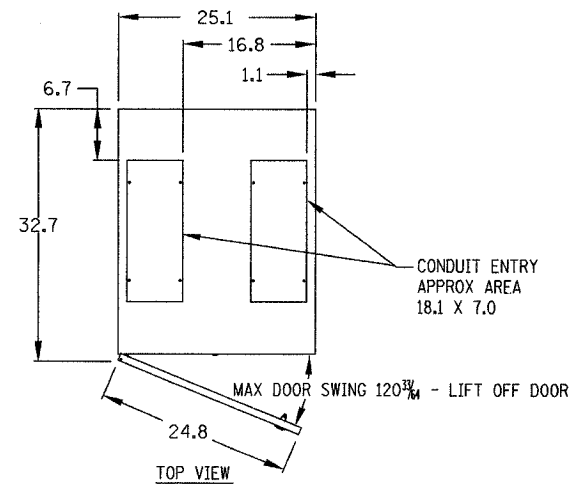


SECTION	COUNTY	TOTAL SHEETS	SHEET NO.
2003-0311	COOK	976	915
STA. TO STA.			
FED. ROAD DIST. NO. ILLINOIS		FED. AID PROJECT	
62583			



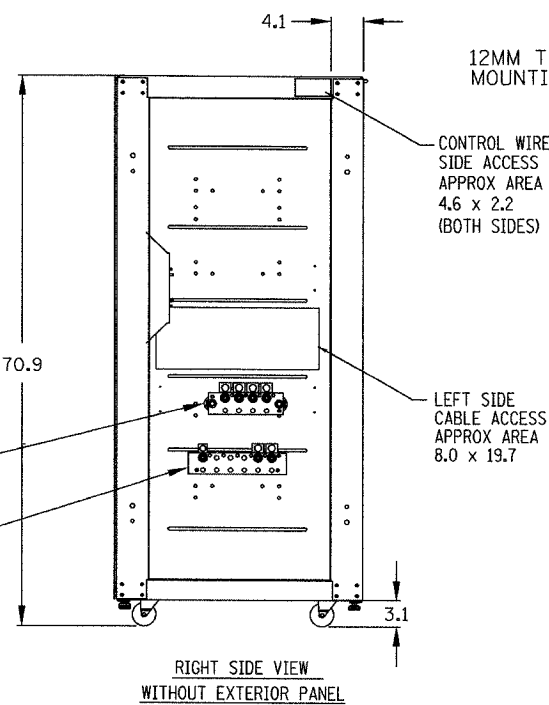
MAINTENANCE BYPASS SWITCH

O A INPUT CABLE
O B CONNECTIONS
O C

O A OUTPUT CABLE
O B CONNECTIONS
O C

NEUTRAL BUS

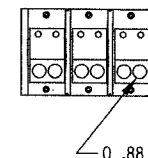
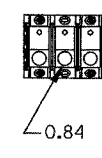
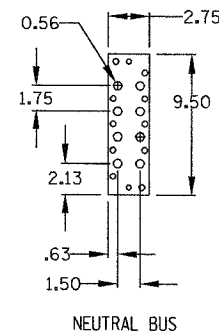
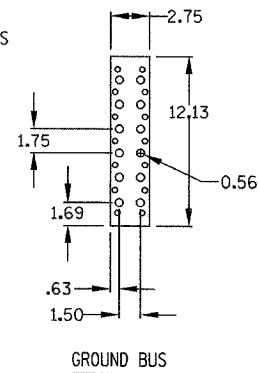
GROUND BUS



12MM THREADED MOUNTING HOLE

CONTROL WIRE SIDE ACCESS APPROX AREA 4.6 X 2.2 (BOTH SIDES)

LEFT SIDE CABLE ACCESS APPROX AREA 8.0 X 19.7



- NOTES:
- ALL DIMENSIONS ARE IN INCHES.
 - MIN CLEARANCE 36 FRONT, 12 TOP FOR AIR EXHAUST.
 - KEEP CABINET WITHIN 15 DEGREES OF VERTICAL WHILE HANDLING.
 - TOP AND BOTTOM CABLE ENTRY AVAILABLE THROUGH REMOVABLE ACCESS PLATES. REMOVE, PUNCH TO SUIT CONDUIT SIZE, AND REPLACE.
 - CONTROL WIRING AND POWER WIRING MUST BE RUN IN SEPARATE CONDUIT. OUTPUT CABLES MUST BE RUN IN A SEPARATE CONDUIT FROM INPUT CABLES.
 - ALUMINUM AND COPPER CLAD ALUMINUM CABLES ARE NOT RECOMMENDED.
 - ALL WIRING IS TO BE IN ACCORDANCE WITH NATIONAL AND LOCAL ELECTRICAL CODES.
 - INTER CABINET WIRING BETWEEN THE UPS AND THE MB CABINET IS SUPPLIED BY LIEBERT, INSTALLATION BY OTHERS.
 - MAINTENANCE BYPASS CABINET IS NOT A STAND ALONE UNIT. IT IS BOLTED TO THE RIGHT SIDE OF THE UPS.
 - COLOR - IBM OFF WHITE.
 - UNIT BOTTOM IS STRUCTURALLY ADEQUATE FOR FORKLIFT HANDLING.
 - THREADED MOUNTING HOLES USED FOR SEISMIC ANCHORING OR FLOOR STAND. NOTE, IF FLOOR STAND IS USED THE WEIGHT OF THE UNIT MUST BE SUPPORTED UNDER ALL CASTERS.
 - EACH MOUNTING LOCATION IS SUPPORTED BY (2) 10 GA. (.135") GALVANIZED STEEL. THE THREADED 12MM INSERT IS APPROX. 3/4" DEEP. MOUNTING BOLTS MUST BE THREADED INTO UNIT MOUNTING HOLES FROM UNDERNEATH UNIT BASE.
 - INCLUDES SIDE PANEL. REFER TO DETAIL A FOR DIMENSION TO FRAME WITH SIDE PANEL REMOVED. SIDE PANELS ARE REMOVED BETWEEN ADJACENT UNITS WHICH ARE BOLTED TOGETHER.

DT-12H

REVISIONS	
NAME	DATE

ILLINOIS DEPARTMENT OF TRANSPORTATION
F.A.I. 94/90 (DAN RYAN EXPRESSWAY)
31st STREET to I-57
TERMINAL DETAILS
25" MAINTENANCE BYPASS CABINET
CONFIGURATION "N" SINGLE INPUT
(NPOWER)

SCALE: AS SHOWN DRAWN BY: SST
DATE: October 29, 2004 CHECKED BY: CS

Edwards AND Kelcey
ONE NORTH FRANKLIN
CHICAGO, IL 60606
PHONE: (312) 251-3000
FAX: (312) 251-3015
WEB: WWW.EKCORP.COM

P:\03000\9035\115\0404\115315.dwg 11/15/2004 11:53:15 AM