

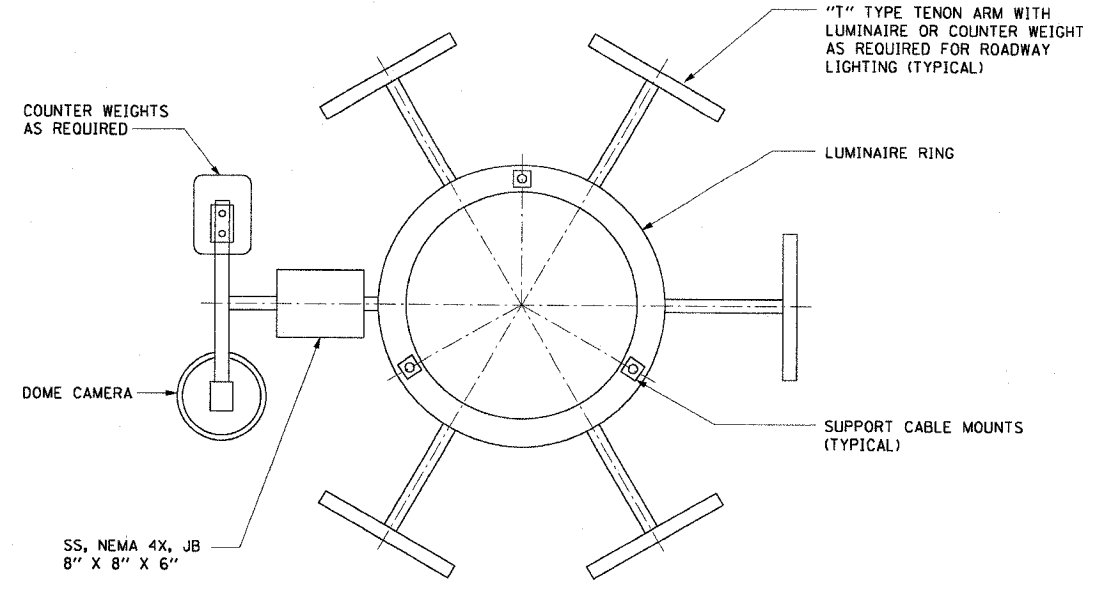
| | | | | |
|-----------------------|-----------|----------|------------------|-----------|
| F.A.I. RTE. | SECTION | COUNTY | TOTAL SHEETS | SHEET NO. |
| 90/94 | 2003-0311 | COOK | 976 | 921 |
| STA. | | TO STA. | | |
| FED. ROAD DIST. NO. 1 | | ILLINOIS | FED. AID PROJECT | |

62583

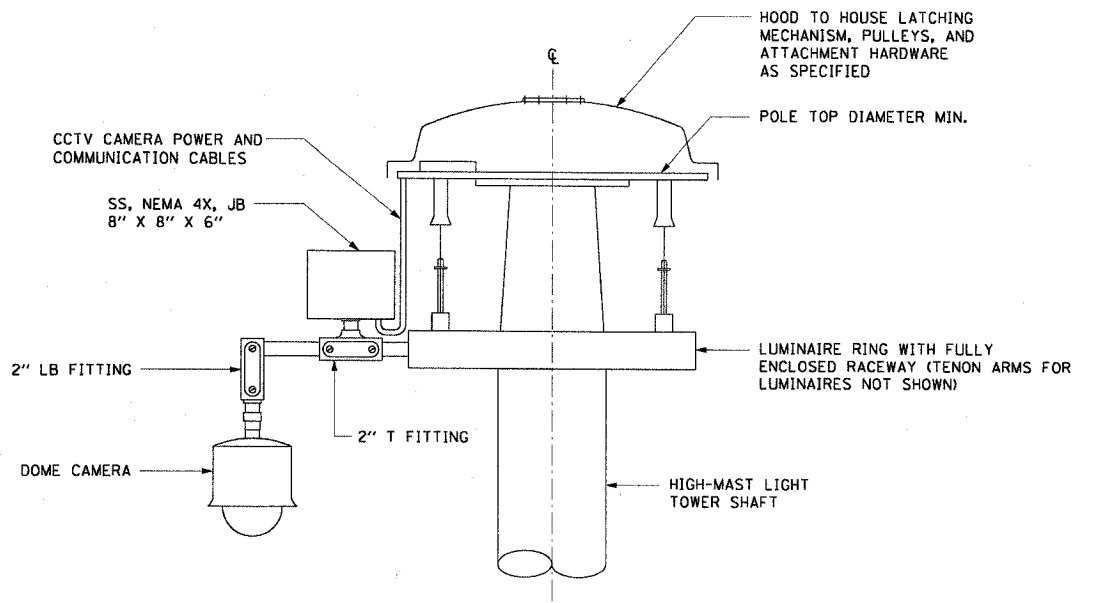
NOTES:

1. SEE SHEETS CCTV-01 THROUGH CCTV-34 FOR PROPOSED CCTV CAMERAS LOCATIONS.
2. HANDHOLE SHALL BE POSITIONED FACING AWAY FROM ONCOMING TRAFFIC.
3. CABINET SHALL BE BOLTED TO MOUNTING CHANNELS. SEE DRAWING DT-15 FOR CABINET DETAILS.
4. BACK OF CABINET SHALL BE PENETRATED TO ACCEPT CONDUIT STUBS IN LIGHT TOWER. ALL PENETRATIONS SHALL BE MADE WATERTIGHT.

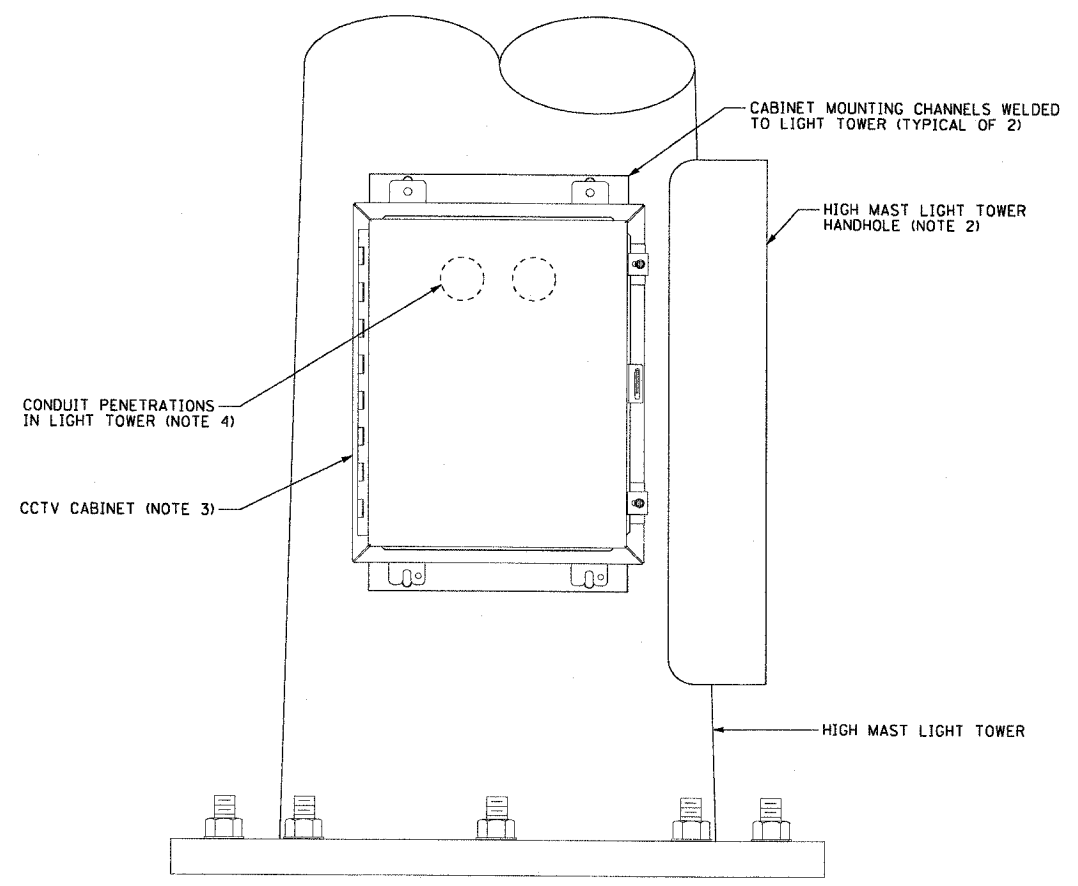
DAN RYAN EXPRESSWAY



DOME CAMERA PLAN VIEW
NOT TO SCALE



CAMERA MOUNTING DETAIL
NOT TO SCALE



CABINET MOUNTING DETAIL
NOT TO SCALE

DT-17

| REVISIONS | |
|-----------|------|
| NAME | DATE |
| | |
| | |
| | |
| | |
| | |
| | |
| | |
| | |
| | |
| | |

ILLINOIS DEPARTMENT OF TRANSPORTATION
F.A.I. 90/94 (DAN RYAN EXPRESSWAY)
31st STREET TO I-57

**CLOSED CIRCUIT TELEVISION
HIGH-MAST LIGHTING TOWER
MOUNTING DETAILS**

SCALE: 1"=50'
DATE: October 29, 2004

DRAWN BY: BHP
CHECKED BY: BMW