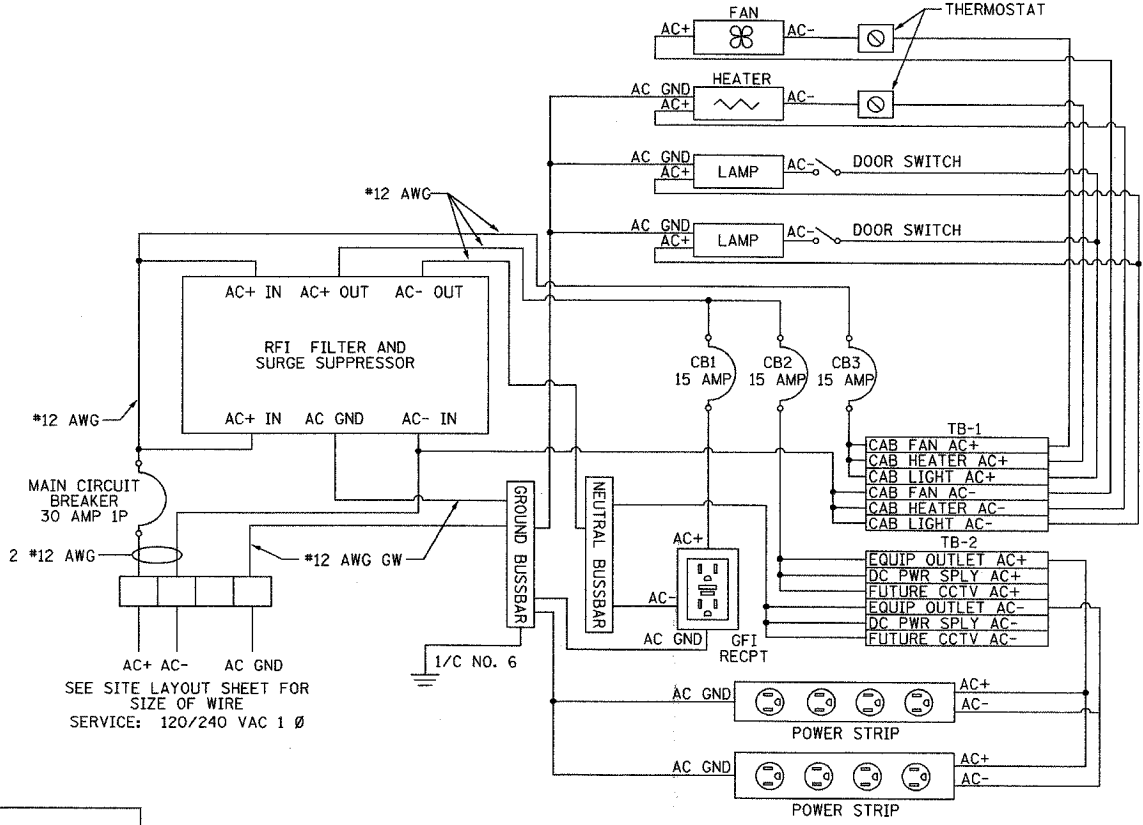
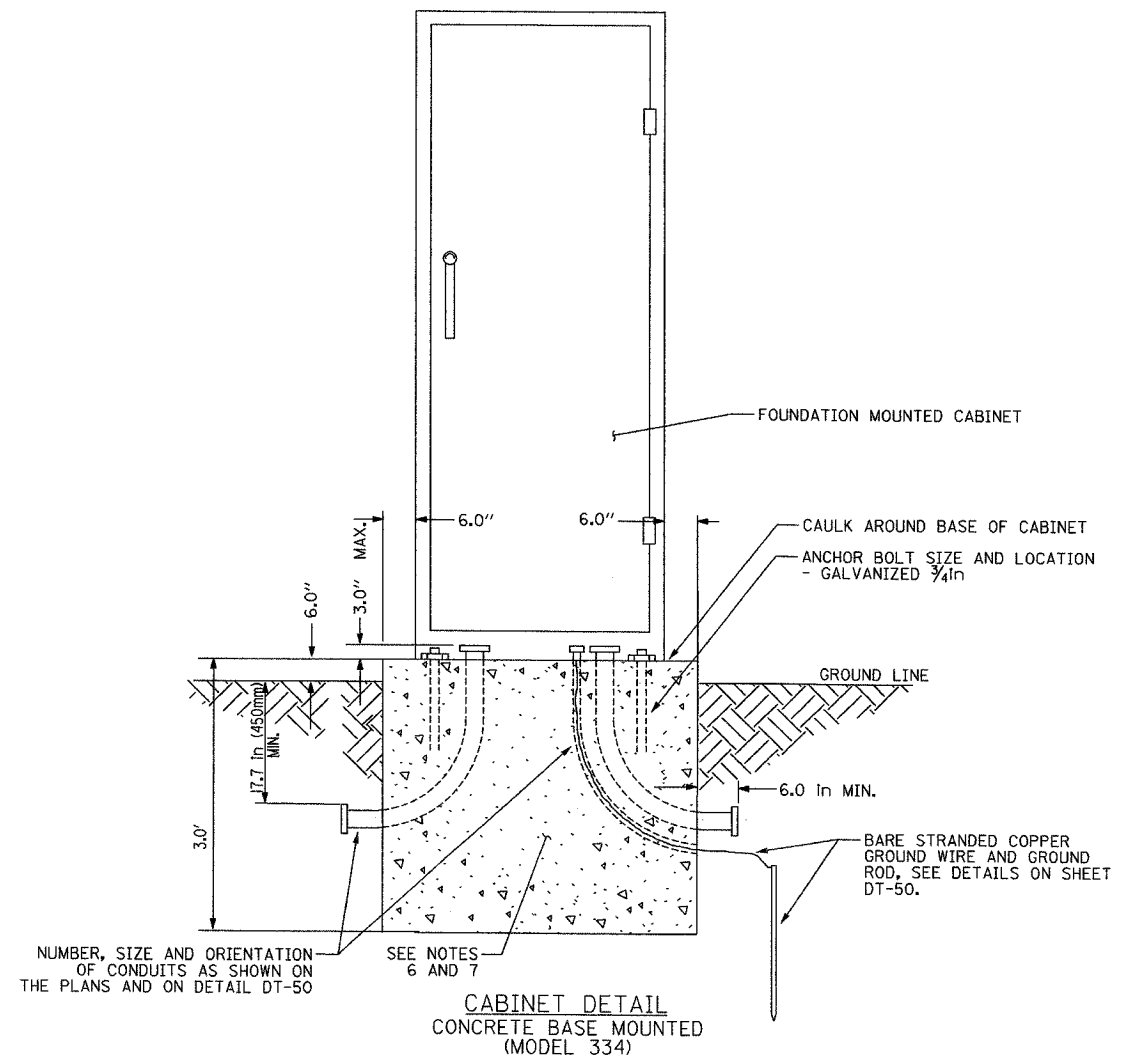
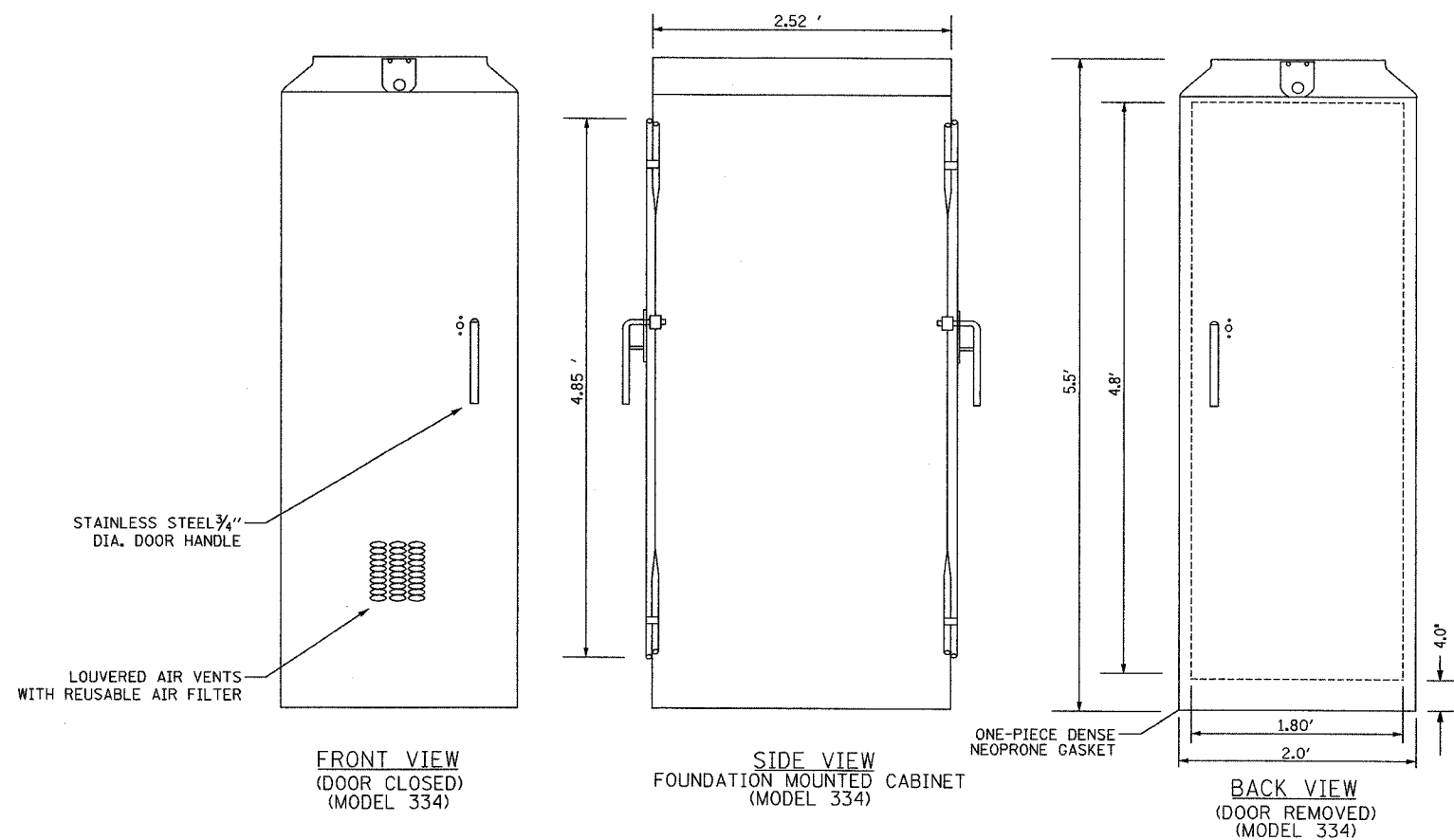


SECTION	COUNTY	TOTAL SHEETS	SHEET NO.
2003-0311	COOK	976	443
STA.	TO STA.		
FED. ROAD DIST. NO.	ILLINOIS FED. AID PROJECT		
62583			



- NOTES**
- REFER TO SPECIAL PROVISIONS FOR CABINET DETAILS AND ADDITIONAL REQUIREMENTS.
  - CABINET ENTRIES INCLUDE VERTICAL ARRANGEMENT FOR MAJOR EQUIPMENT ITEMS ONLY.
  - INSTALL ADDITIONAL ITEMS ON SIDE AND BACK PANELS PER THE SPECIAL PROVISIONS.
  - THE CONTRACTOR SHALL INSTALL INSULATED BUSHINGS AND DUCT SEALANT AT ALL CONDUIT BEND TERMINATIONS IN FOUNDATIONS.
  - CONCRETE BASE TO BE FORMED AT LEAST 6.0 IN ABOVE THE GROUND SURFACE.
  - CONCRETE BASE MUST BE CAST IN PLACE.
  - ALL WORK INDICATED SHALL BE PAID FOR UNDER ITEM CABINET, MODEL 334 EXCLUSIVE OF THE CONCRETE FOUNDATION.
  - CABINET BOTTOM CONFIGURATION SHALL BE AS DIRECTED BY THE ENGINEER.

REVISIONS	
NAME	DATE

ILLINOIS DEPARTMENT OF TRANSPORTATION  
 F.A.I. 94/90 (DAN RYAN EXPRESSWAY)  
 31st STREET to I-57

CABINET, MODEL 334 DETAILS

SCALE: NTS  
 DATE: October 29, 2004

DRAWN BY: MJL  
 CHECKED BY: GFR

**Edwards AND Kelcey**  
 ONE NORTH FRANKLIN  
 CHICAGO, IL 60606  
 PHONE: (312) 251-3000  
 FAX: (312) 251-3015  
 WEB: WWW.EKCORP.COM

**SURVEILLANCE CABINET POWER DISTRIBUTION ASSEMBLY (PDA)**  
 NOT TO SCALE

DT-36

10/15/2004 03:02:24 PM