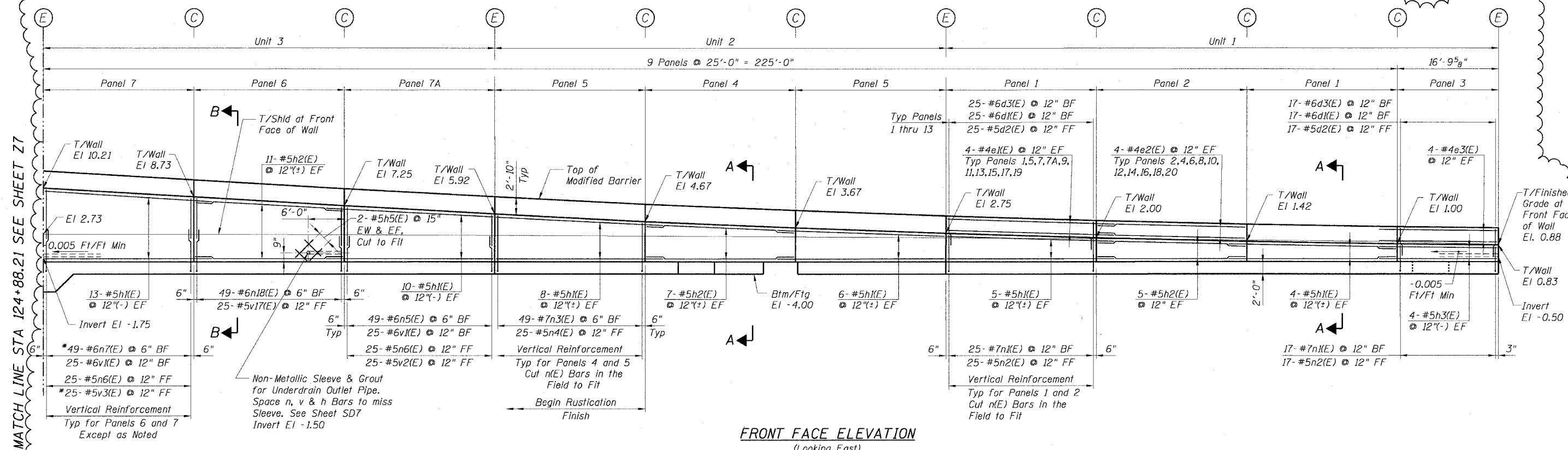


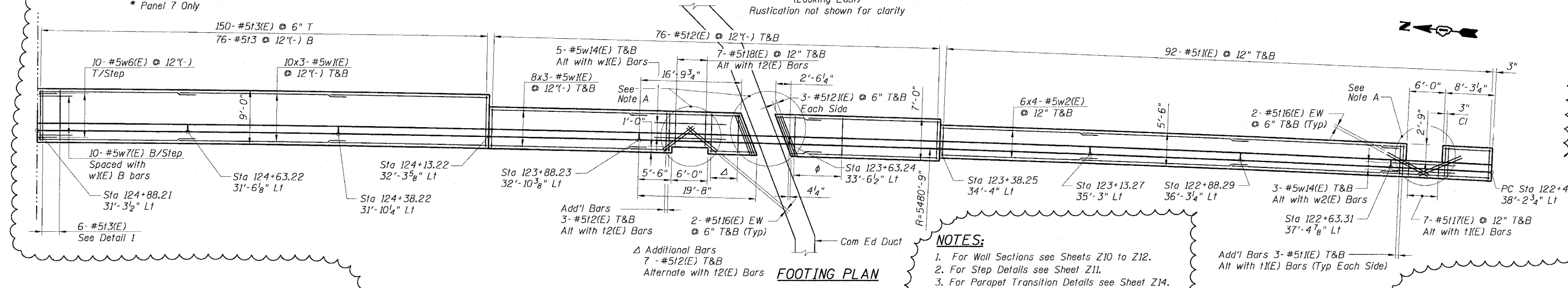
STATE OF ILLINOIS  
DEPARTMENT OF TRANSPORTATION

F.A.I. RTE.	SECTION	COUNTY	TOTAL SHEETS	SHEET NO.
90/94	2021-922PT.1-AC	COOK	460	261
STA.	TO STA.			
FED. ROAD DIST. NO. 1	ILLINOIS	FED. AID PROJECT		

62693



**FRONT FACE ELEVATION**  
(Looking East)  
Rustication not shown for clarity



**FOOTING PLAN**

**NOTE A:**  
Cut Transverse and Longitudinal Bars  
in the Field to Fit.

- NOTES:**
- For Wall Sections see Sheets Z10 to Z12.
  - For Step Details see Sheet Z11.
  - For Parapet Transition Details see Sheet Z14.
  - For Bar Bending Diagrams see Sheet Z16.
  - For Non-Metallic Sleeve and Grout detail see Sheet SD7.
  - Conduit and non-metallic sleeves shall be installed to miss Wall reinforcing bars. For Wall Penetration Details see Sheet SD7.
  - Minimum lap lengths for horizontal bars shall be as follows:  
for #4e bars - 1'-8"  
for #5h bars - 2'-2"  
for #5w bars - 2'-5"
  - Bars indicated thus 18x6-#5 etc, indicates 18 lines of bars with 6 lengths per line.
  - Work Sheets Z6 thru Z12 together.

REVISIONS	
NAME	DATE
JSS	01/06/05

Sheet Z6 of Z1

ILLINOIS DEPARTMENT OF TRANSPORTATION  
F.A.I. 90/94 (DAN RYAN EXPRESSWAY)  
DETAILED PLAN AND ELEVATION  
SOUTH WENTWORTH AVENUE RETAINING WALL  
WEST 59TH STREET TO WEST 63RD STREET  
SECTION 2021-922PT.1-AC  
STATION 122+46.54 TO 130+53.87  
COOK COUNTY S.N. 016-W887-W965

SCALE: None DRAWN BY: ET  
DATE: October 29, 2004 CHECKED BY: JSS/MM

