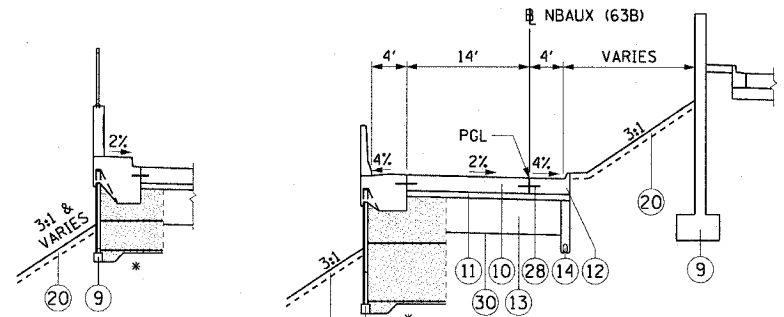


RAMP PAVEMENT DESIGN INFORMATION

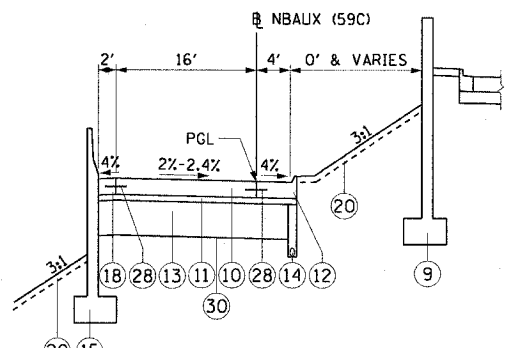
STRUCTURAL DESIGN TRAFFIC: YEAR 2020
 PV= 16,758 SU= 532 MU= 1,710
 ROAD/STREET CLASSIFICATION: CLASS 1
 P= 100% S= 100% M= 100%
 TRAFFIC FACTOR: ACTUAL TF= 38.10 AC TYPE= N/A
 MINIMUM TF= 16.75
 PG GRADE: BINDER= SURFACE=
 SUBGRADE SUPPORT RATING:
 SSR= 2.00 (STA TO STA)
 SSR= 2.00 (STA TO STA)

PROPOSED LEGEND:

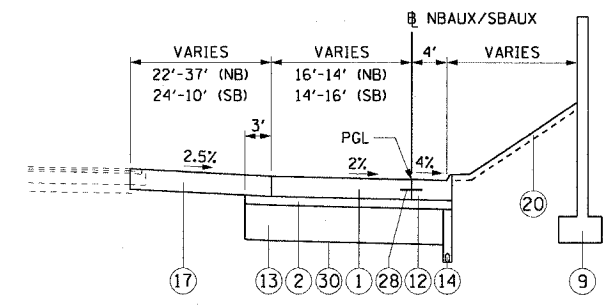
- 1 CONTINUOUSLY REINFORCED PORTLAND CEMENT CONCRETE PAVEMENT, 14"
- 2 STABILIZED SUB-BASE, 6"
- 3 PORTLAND CEMENT CONCRETE SHOULDERS, 14"
- 4 SUB-BASE GRANULAR MATERIAL, TYPE B, 8"
- 5 COMBINATION CONCRETE CURB AND GUTTER, TYPE B-6.12 (MODIFIED)
- 6 COMBINATION CONCRETE CURB AND GUTTER, TYPE B-V.12
- 7 PORTLAND CEMENT CONCRETE SIDEWALK, 5"
- 8 CONCRETE MEDIAN SURFACE, 5" (MODIFIED)
- 9 RETAINING WALL OR MSE WALL WITH MOMENT SLAB
- 10 PORTLAND CEMENT CONCRETE PAVEMENT, 11" (JOINTED)
- 11 STABILIZED SUB-BASE, 4"
- 12 COMBINATION CONCRETE CURB AND GUTTER, TYPE M-4.48 (MODIFIED)
- 13 SUB-BASE GRANULAR MATERIAL, TYPE B, 24"
- 14 PIPE UNDERDRAIN, 6"
- 15 RETAINING WALL WITH CONCRETE BARRIER, SINGLE FACE
- 16 COMBINATION CONCRETE CURB AND GUTTER, TYPE M-4.12
- 17 TEMPORARY PAVEMENT (INTERSTATE) (14" BITUMINOUS OR 12" P.C.C.)
- 18 PORTLAND CEMENT CONCRETE SHOULDERS, 11"
- 20 SEEDING, CLASS 2A / TOPSOIL FURNISH AND PLACE, 4"
- 21 PORTLAND CEMENT CONCRETE PAVEMENT, 10" (JOINTED)
- 22 SODDING, SALT TOLERANT / TOPSOIL FURNISH AND PLACE, 4"
- 24 CONCRETE BARRIER, SINGLE FACE, 32"
- 25 BARRIER BASE
- 26 COMBINATION CONCRETE CURB AND GUTTER, TYPE M-4.24
- 27 TIE BARS - 24" LONG, #6 EPOXY COATED BARS AT 24" CENTERS
- 28 SHOULDER LONGITUDINAL CONSTRUCTION JOINT - 30" LONG, #8 EPOXY COATED DEFORMED BARS AT 24" CENTERS
- 29 CHAIN LINK FENCE, 4'
- 30 GEOTECHNICAL FABRIC FOR GROUND STABILIZATION
- 31 AGGREGATE BASE COURSE, TYPE B, 4"
- 32 BITUMINOUS SHOULDERS, 1 1/2"
- 33 FURNISH TEMPORARY CONCRETE BARRIER
- 34 KEYED LONGITUDINAL CONSTRUCTION JOINT - 24" LONG, #6 EPOXY COATED DEFORMED TIE BARS AT 24" CENTERS
- 35 SAND CUSHION, 3"
- 36 CONCRETE MEDIAN SURFACE, 6" (SPECIAL)
- 37 SAND BACKFILL
- 38 CONCRETE MEDIAN SURFACE, 6"
- 39 P.C.C. SIDEWALK, 5" AND SAND CUSHION, 3" (BY OTHERS)



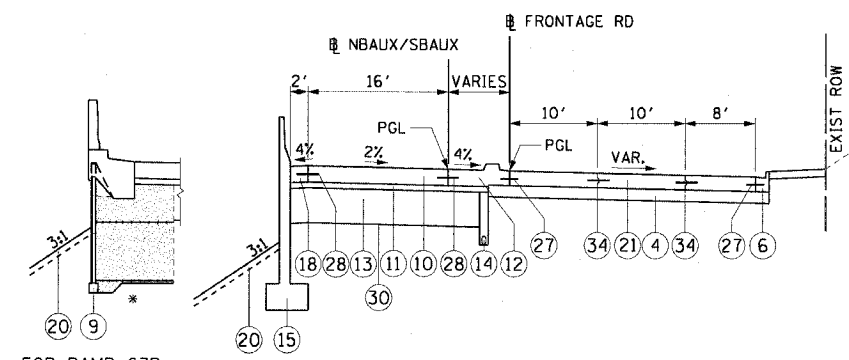
1 RAMP TYPICAL SECTION
 STA 9501+90.55 TO STA 9507+83.45 (RAMP 63B)
 * SEE STRUCTURAL SHEETS FOR SELECT BACKFILL LIMITS



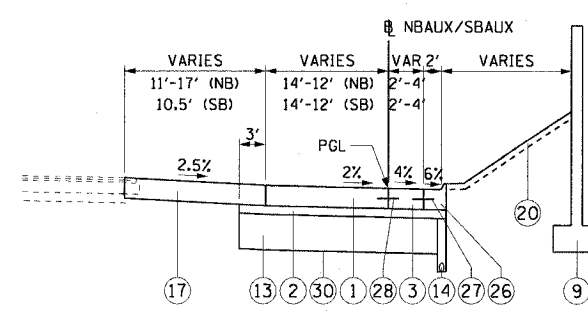
4 RAMP TYPICAL SECTION
 STA 9515+58.89 TO STA 9520+14.00 (RAMP 59C)
 BEGIN SUPERELEVATION: STA 9518+73.42
 FULL SUPERELEVATION: STA 9518+84.31 (2.4% RT)



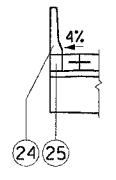
2 RAMP TYPICAL SECTION
 STA 9507+83.45 TO STA 9509+62.37 (RAMP 63B)
 STA 9511+34.61 TO STA 9515+58.89 (RAMP 59C)
 STA 9006+26.55 TO STA 9008+48.92 (RAMP 59D)
 STA 9010+72.18 TO STA 9013+75.41 (RAMP 63A)



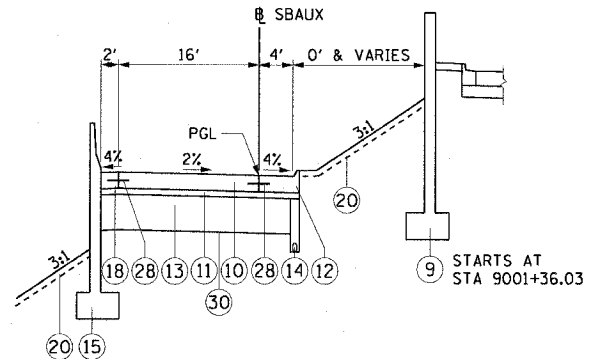
5 TYPICAL SECTION FRONTAGE ROAD / RAMP
 STA 9018+33.40 TO STA 9018+69.64 (RAMP 63A)
 STA 9520+03.23 TO STA 9520+15.09 (RAMP 59C)
 * SEE STRUCTURAL SHEETS FOR SELECT BACKFILL LIMITS



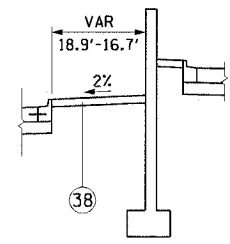
3 RAMP TYPICAL SECTION
 STA 9509+62.37 TO STA 9511+34.61 (NBAUX)
 STA 9008+48.92 TO STA 9010+72.18 (SBAUX)



CONCRETE BARRIER, SINGLE FACE
 STA 9013+75.41 TO STA 9016+60.56 (RAMP 63A)



6 RAMP TYPICAL SECTION
 STA 9001+06.22 TO STA 9006+26.55 (RAMP 59D)
 STA 9013+75.41 TO STA 9018+68.64 (RAMP 63A)



CONCRETE MEDIAN SURFACE, 6''
 STA 9015+42.38 TO STA 9016+05.11 (RAMP 63A)

NOTES:

1. THE ADDITIONAL THICKNESS OF SUB-BASE GRANULAR MATERIAL UNDER THE SHOULDER SHALL BE INCLUDED IN THE COST PER SQ. YD. OF SUB-BASE GRANULAR MATERIAL, TYPE B, 24 INCHES.
2. FOR GORE INFORMATION, SEE GORE DETAILS SHEETS.

REVISIONS	
NAME	DATE

ILLINOIS DEPARTMENT OF TRANSPORTATION
 F.A.I. 90/94 (DAN RYAN EXPRESSWAY)
 63rd ST TO 59th ST (FRONTAGE ROAD & RAMPS)

PROPOSED TYPICAL SECTIONS 59TH & 63RD STREET RAMPS

SCALE: H:1"=10', V:1"=5'
 DATE: October 29, 2004
 DRAWN BY: AMM
 CHECKED BY: RMG

11/23/2004 02:55:01 PM