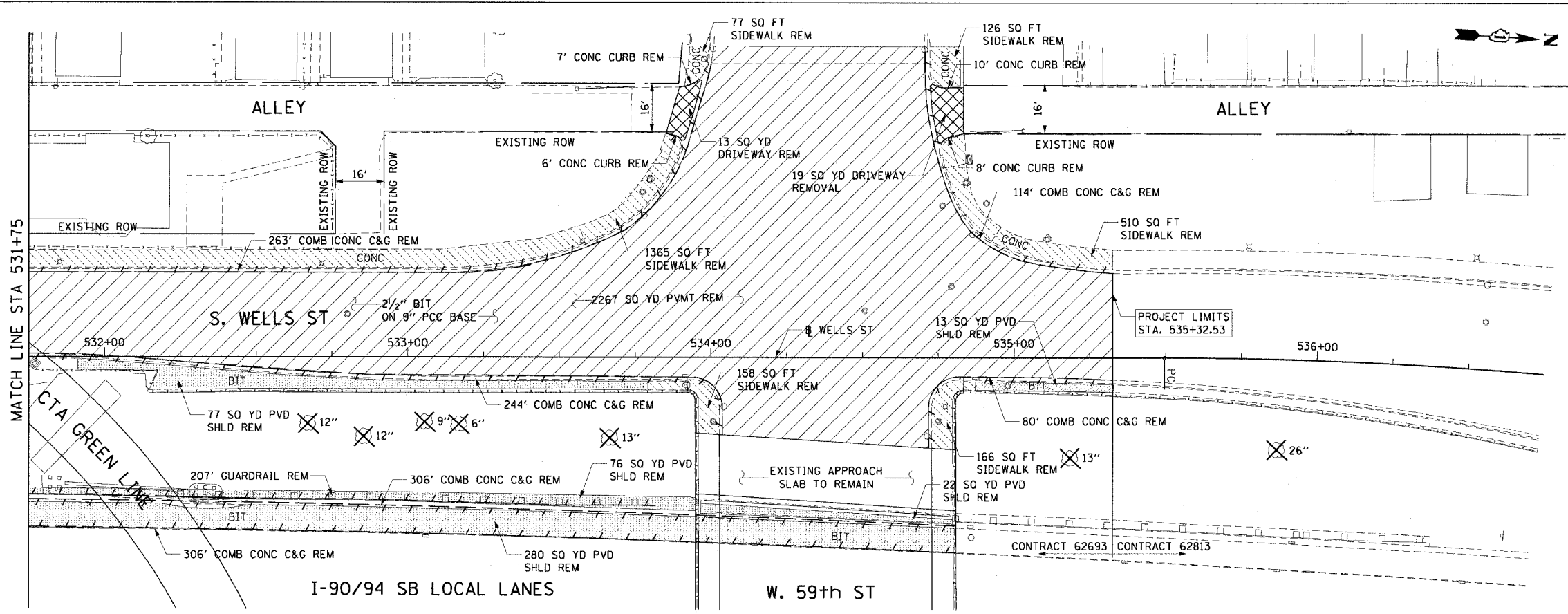


F.A.I. RTE.	SECTION	COUNTY	TOTAL SHEETS	SHEET NO.
90/94	2021-922PT.1-AC	COOK	460	50
STA. 531+75	TO STA. 536+75			
FED. ROAD DIST. NO. 1	ILLINOIS	FED. AID PROJECT		

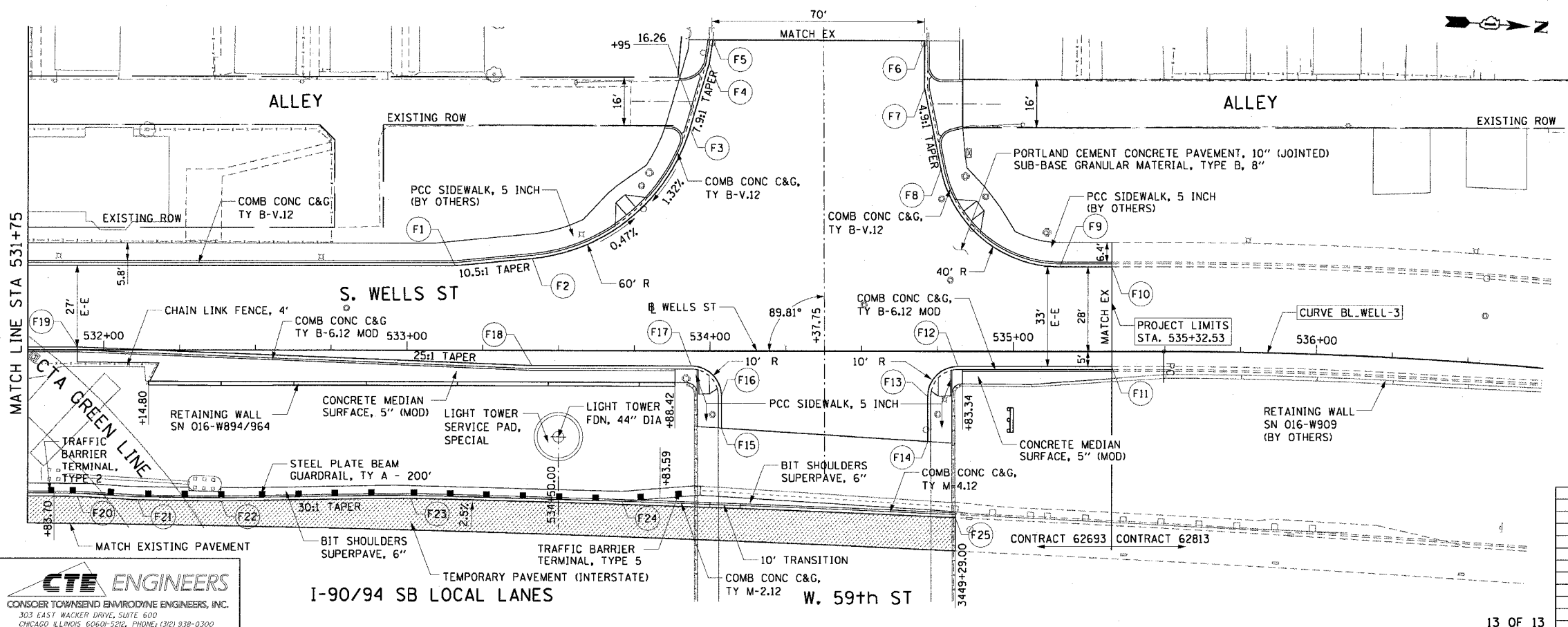
62693



- LEGEND:**
- PAVEMENT REMOVAL
  - MEDIAN REMOVAL
  - LINEAR REMOVALS
  - SIDEWALK REMOVAL
  - APPROACH SLAB REMOVAL
  - DRIVEWAY PAVEMENT REMOVAL
  - PAVED SHOULDER REMOVAL
  - TREE REMOVAL (BY OTHERS)

- NOTES:**
1. SEE CONTRACT 62583 FOR REMOVAL OF EXISTING ROADWAY LIGHTING AND ITS EQUIPMENT.
  2. SEE STRUCTURAL SHEETS FOR RETAINING WALL REMOVALS AND IMPROVEMENTS.
  3. SEE DRAINAGE AND UTILITY SHEETS FOR REMOVALS AND IMPROVEMENTS.
  4. FOUNDATIONS FOR ROADWAY LIGHTING AND ITS EQUIPMENT ARE REMOVED IN CONTRACT 62693. SEE ELECTRICAL EXISTING CONDITIONS AND DEMOLITION PLANS.
  5. SEE SIGNING SHEETS FOR MAINLINE REMOVAL AND IMPROVEMENTS.
  6. ALL EXISTING DRIVEWAYS SHOWN ARE CONCRETE UNLESS NOTED OTHERWISE.

**EXISTING CONDITIONS AND REMOVAL PROPOSED IMPROVEMENTS**



- LEGEND:**
- TEMPORARY PAVEMENT (IMPROVEMENT)
- NOTES:**
1. SEE INTERSECTION DETAIL SHEETS FOR INTERSECTION GRADING DETAILS.
  2. SEE ELECTRICAL INFRASTRUCTURE SHEETS FOR IMPROVEMENTS.
  3. SEE ROADWAY DETAIL SHEETS FOR CURB AND GUTTER TRANSITIONS AT THE BRIDGE APPROACH PAVEMENT.

PT.	STATION	OFFSET	LOC	PT.	STATION	OFFSET	LOC
F1	533+15.89	28.00'	LT EOP	F14	534+71.85	29.75'	RT EOP
F2	533+41.34	30.41'	LT EOP	F15	534+03.83	25.44'	RT EOP
F3	533+93.29	73.38'	LT EOP	F16	534+03.80	14.97'	RT EOP
F4	533+99.60	95.04'	LT EOP	F17	533+93.80	5.00'	RT EOP
F5	534+00.83	102.80'	LT EOP	F18	533+41.26	5.00'	RT EOP
F6	534+70.67	102.68'	LT EOP	F19	531+91.26	1.00'	LT EOP
F7	534+70.65	86.84'	LT EOP	F20	3446+40.35	37.16'	LT EOP
F8	534+76.09	60.04'	LT EOP	F21	3446+60.24	36.12'	LT EOP
F9	535+15.29	28.00'	LT EOP	F22	3446+87.56	36.01'	LT EOP
F10	535+32.53	28.00'	LT EOP	F23	3447+49.73	37.91'	LT EOP
F11	535+32.53	5.00'	RT EOP	F24	3448+19.13	38.79'	LT GR
F12	534+81.80	5.00'	RT EOP	F25	3449+28.51	37.78'	LT EOP
F13	534+71.80	15.03'	RT EOP				

REVISIONS	
NAME	DATE

ILLINOIS DEPARTMENT OF TRANSPORTATION  
 F.A.I. 90/94 (DAN RYAN EXPRESSWAY)  
 63rd ST TO 59th ST (FRONTAGE ROAD & RAMPS)  
**EXISTING AND PROPOSED ROADWAY PLANS  
 WELLS STREET**

SCALE: 1"=20'  
 DATE: October 29, 2004  
 DRAWN BY: NJH  
 CHECKED BY: RMG

**CTE ENGINEERS**  
 CONSOER TOWNSEND ENVIRONMENTAL ENGINEERS, INC.  
 303 EAST WACKER DRIVE, SUITE 600  
 CHICAGO, ILLINOIS 60601-3216, PHONE: (312) 938-0300

11/23/2004 03:05:42 PM