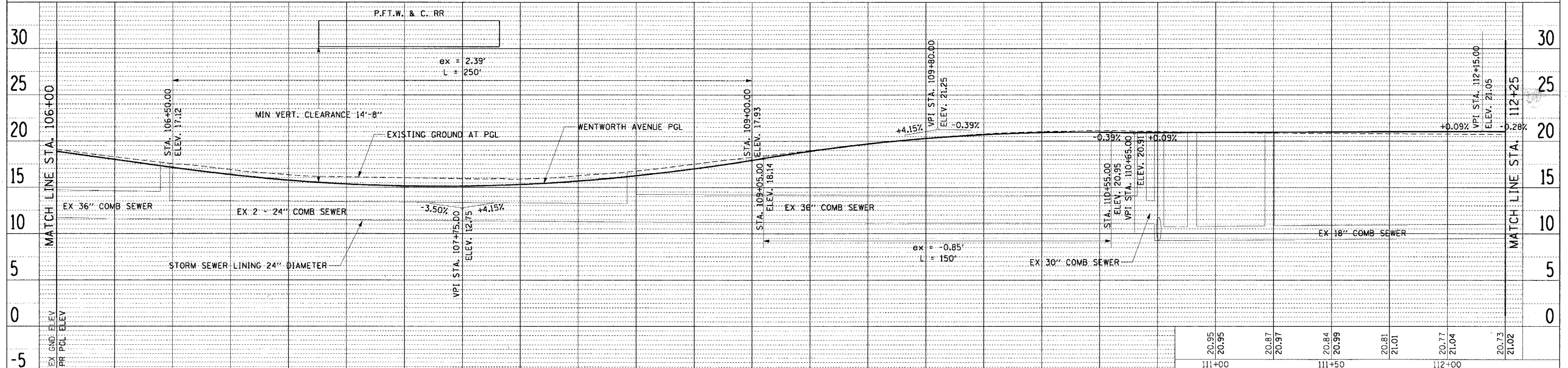
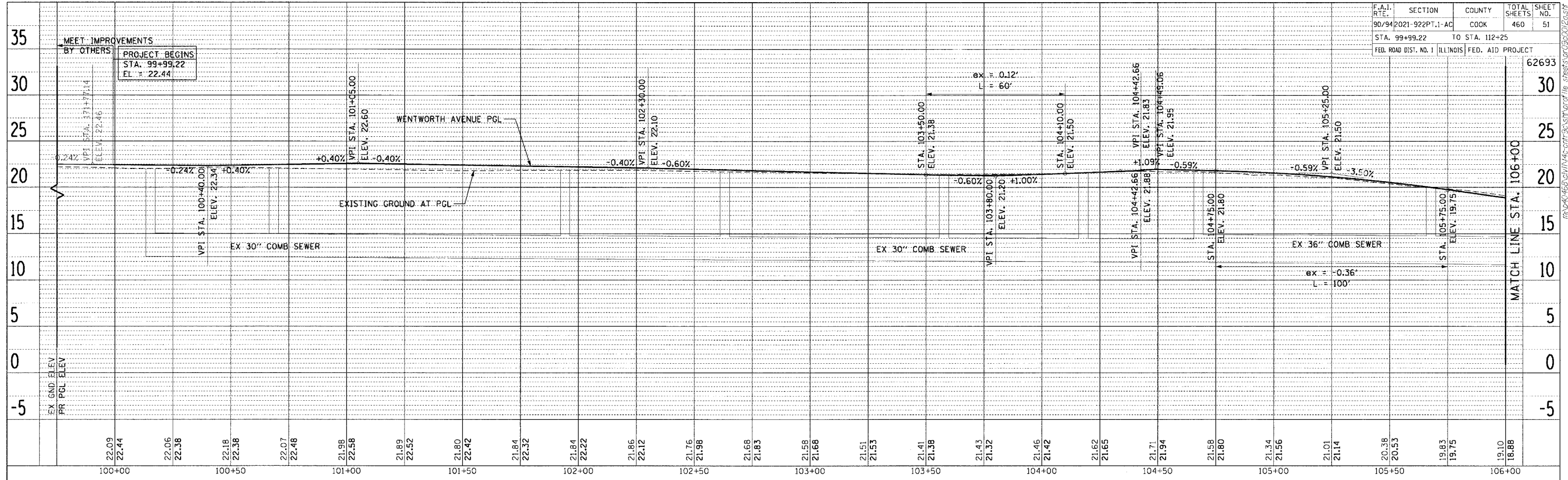


F.A.I. RT.	SECTION	COUNTY	TOTAL SHEETS	SHEET NO.
90/94	2021-922PT.1-AC	COOK	460	51
STA. 99+99.22 TO STA. 112+25		FED. ROAD DIST. NO. 1 ILLINOIS FED. AID PROJECT		



PLAN	SURVEYED	BY	DATE
NOTE BOOK	ALIGNED		
NO.	CHECKED		
	BY		
	FILE NAME		

PLAN	SURVEYED	BY	DATE
NOTE BOOK	ALIGNED		
NO.	CHECKED		
	BY		
	FILE NAME		

19.10	18.88	18.28	18.00	17.53	17.13	16.88	16.35	16.32	15.76	16.11	15.36	16.02	15.15	15.93	15.14	15.89	15.32	16.24	15.68	16.74	16.24	17.51	16.99	18.26	17.93	18.98	18.91	19.75	19.70	20.33	20.30	20.79	20.71	21.03	20.94	21.14	20.97	21.04	20.92				
106+00								107+00				107+50				108+00				108+50				109+00					109+50				110+00				110+50						

REVISIONS	
NAME	DATE

ILLINOIS DEPARTMENT OF TRANSPORTATION  
 F.A.I. 90/94 (DAN RYAN EXPRESSWAY)  
 63rd ST TO 59th ST (FRONTAGE ROAD & RAMPS)

**PROPOSED PROFILES  
 WENTWORTH AVENUE**

SCALE: H: 1"=20', V: 1"=5'  
 DATE: October 29, 2004  
 DRAWN BY: NJH  
 CHECKED BY: RMC

**CTE ENGINEERS**  
 CONSOER TOWNSEND ENVIRONMENTAL ENGINEERS, INC.  
 303 EAST WACKER DRIVE, SUITE 600  
 CHICAGO, ILLINOIS 60601-3002, PHONE: (312) 938-0300

10/24/2004 10:25 AM