

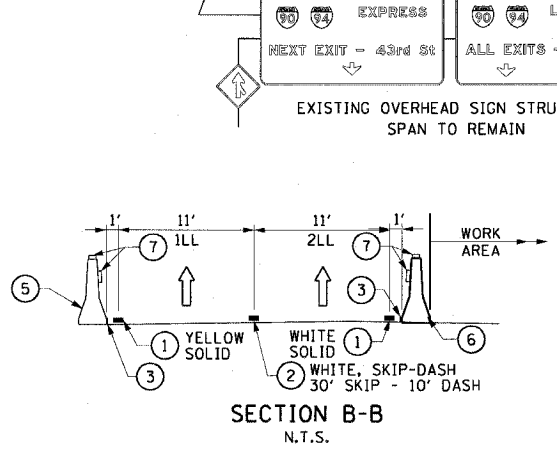
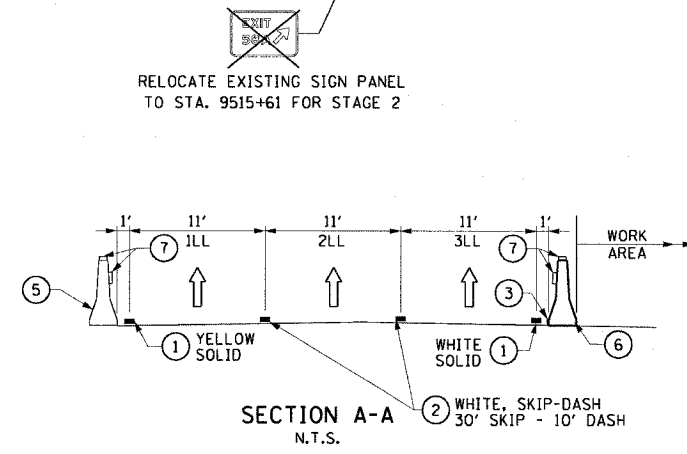
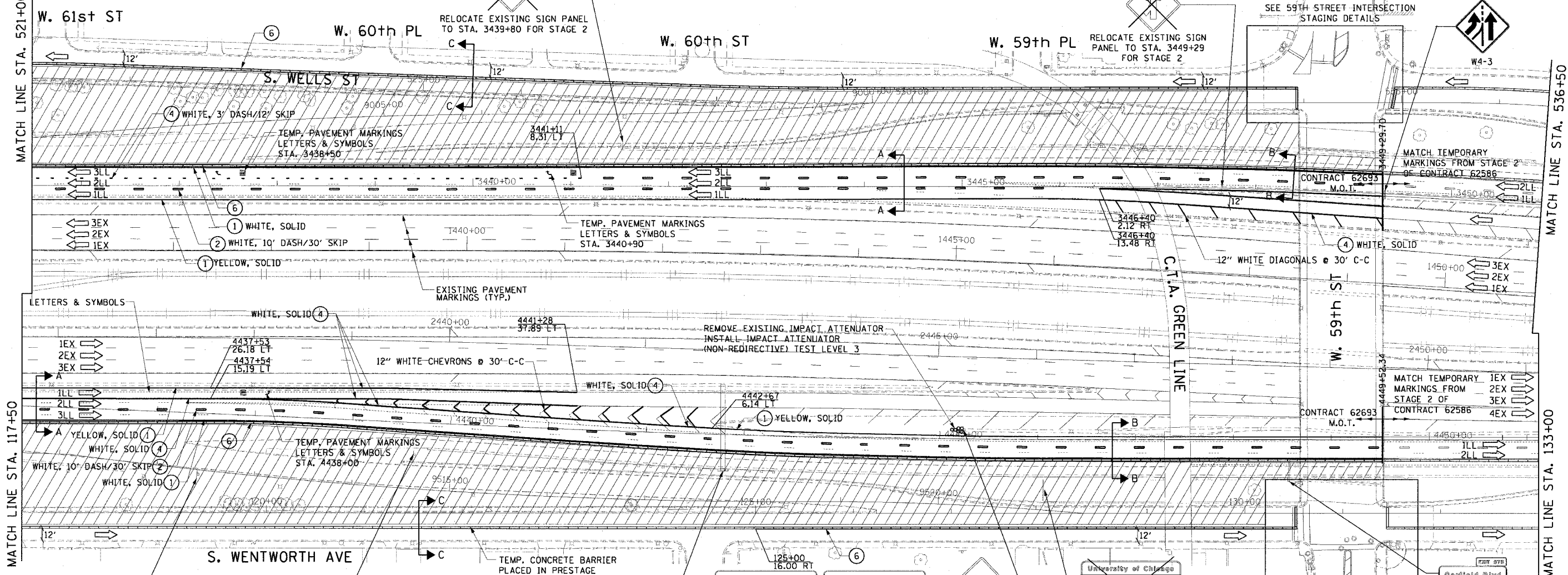
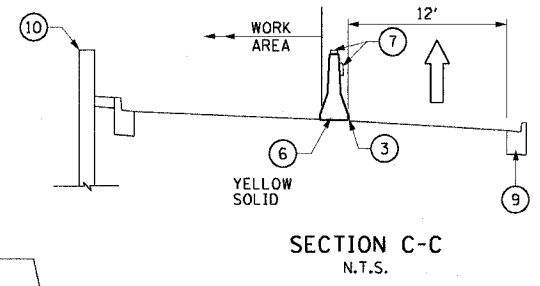
F.A.I. RTE.	SECTION	COUNTY	TOTAL SHEETS	SHEET NO.
90/94	2021-922PT.1-AC	COOK	460	68
STA.	TO STA.			
FED. ROAD DIST. NO. 1	ILLINOIS	FED. AID PROJECT	62693	

LEGEND

- ① TEMPORARY PAVEMENT MARKING 4"
- ② TEMPORARY PAVEMENT MARKING 5"
- ③ TEMPORARY PAVEMENT MARKING 6"
- ④ TEMPORARY PAVEMENT MARKING 8"
- ⑤ EXISTING CONCRETE BARRIER
- ⑥ TEMPORARY CONCRETE BARRIER (CONTRACTOR FURNISHED)
- ⑦ MONODIRECTIONAL PRISMATIC BARRIER REFLECTOR @ 50' C-C SPACING
- ⑧ BITUMINOUS OVERLAYED CURB AND GUTTER
- ⑨ CURB AND GUTTER
- ⑩ RETAINING WALL
- 1EX → EXPRESS LANE DIRECTION OF TRAFFIC
- 1LL → LOCAL LANE DIRECTION OF TRAFFIC
- WORK AREA
- IMPACT ATTENUATOR
- DRUM OR TYPE II BARRICADE WITH STEADY BURNING LIGHT
- TYPE III BARRICADE
- ARROW BOARD

NOTES:

- CONTRACTOR MUST COORDINATE TRAFFIC CONTROL WITH ADJOINING CONTRACT 62586. MARKINGS AND TRAFFIC CONTROL DEVICES MUST BE ADJUSTED AS NECESSARY TO MEET CONTRACT 62586 LANE REQUIREMENTS. MOT FOR THIS CONTRACT IS SHOWN FOR INFORMATION ONLY. CONTRACTOR SHOULD FIELD VERIFY TEMPORARY MARKINGS OF ADJOINING CONTRACTS. MOT FOR THIS CONTRACT IS SHOWN FOR INFORMATION ONLY.
- TEMPORARY PAVEMENT SHOULD BE CONSTRUCTED IN THIS STAGE ALONG S.B. LOCAL LANES BETWEEN STA. 3433+60 AND THE 59TH STREET BRIDGE.
- SEE TEMPORARY SIGN PANEL DETAILS FOR LAYOUT OF TEMPORARY INFORMATION SIGNING.
- SIGN PANEL OVERLAYS FOR S.B. EXISTING PANELS NORTH OF 31ST STREET MUST BE IN PLACE PRIOR TO THE START OF STAGE 1.
- ALL MARKINGS ON THIS SHEET ARE EPOXY.



INSTALL PERMANENT SIGN PANEL OVERLAYS ON EXISTING TRUSS MOUNTED OVERHEAD SIGN PANELS NORTH OF 31ST STREET

EXPRESS	55th St	3'
OVERLAY PANEL		
ORANGE BACKGROUND		
16" BLACK EM LETTERS		

LOCATION	MILEPOST
#1	= 53.07 SB
#2	= 53.61 SB
#3	= 53.97 SB
#4	= 54.13 SB
#5	= 54.25 SB
#6	= 54.53 SB

SOUTHBOUND DAN RYAN EXPRESSWAY 6 LOCATIONS

REVISIONS	
NAME	DATE

ILLINOIS DEPARTMENT OF TRANSPORTATION
 F.A.I. 90/94 (DAN RYAN EXPRESSWAY)
 63rd ST TO 59th ST (FRONTAGE ROAD & RAMPS)

SUGGESTED STAGES OF CONSTRUCTION AND TRAFFIC CONTROL STAGE 1

SCALE: 1"=50'
 DATE: October 29, 2004
 DRAWN BY: SWANG
 CHECKED BY: RMG