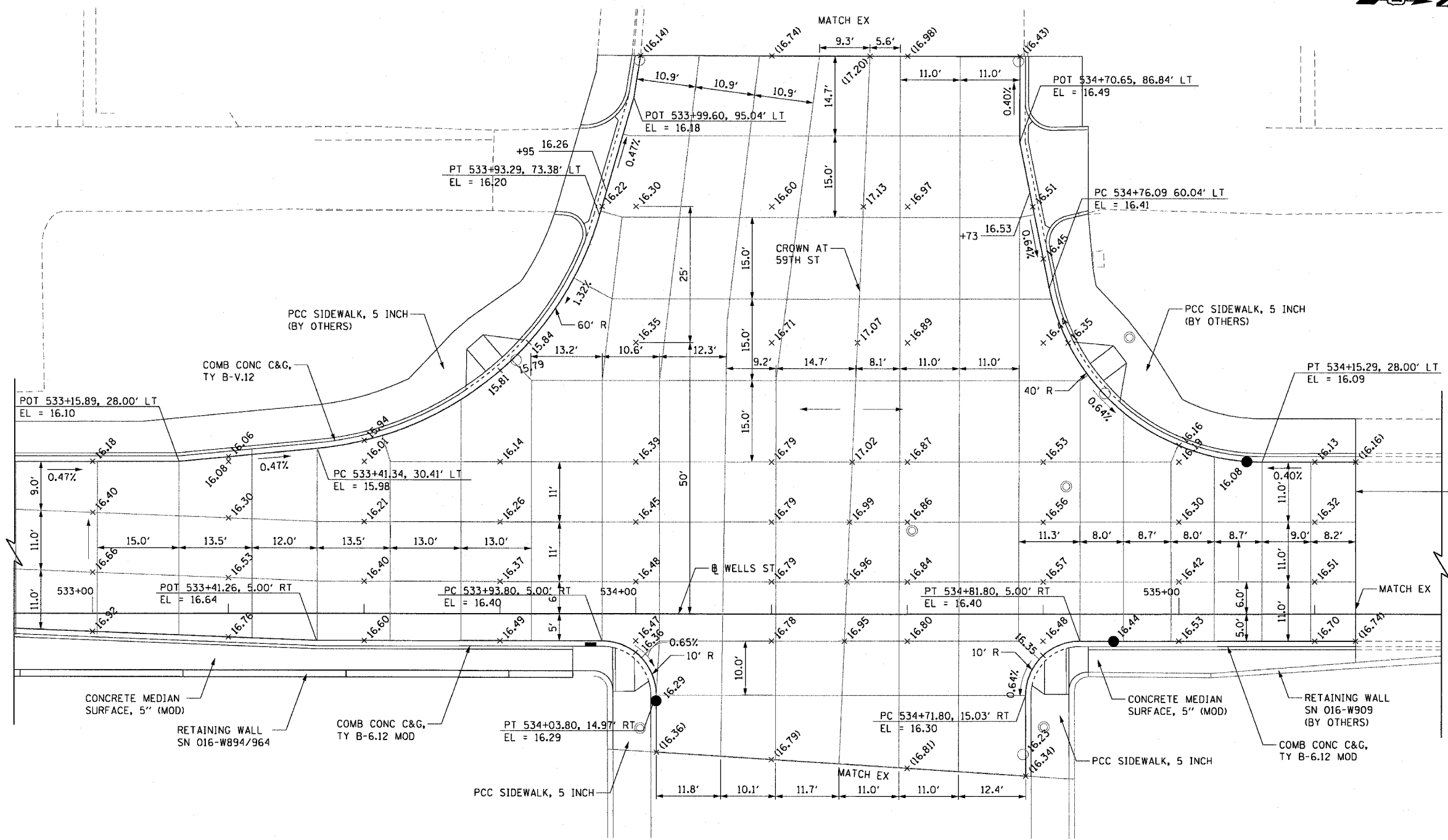


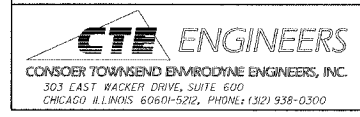
F.A.I. RTE.	SECTION	COUNTY	TOTAL SHEETS	SHEET NO.
90/94	2021-922PT.1-AC	COOK	460	109
STA.	TO STA.			
FED. ROAD DIST. NO. 1	ILLINOIS	FED. AID PROJECT		

62693



- LEGEND:**
- EXISTING ELEVATION (XX.XX)
  - PROPOSED ELEVATION XX.XX
  - DIRECTION OF PAVEMENT SLOPE
- NOTES:**
1. SEE ROADWAY DETAILS FOR CURB AND GUTTER TRANSITION DETAILS AT THE APPROACH SLAB.
  2. USE DOWEL BARS INSTEAD OF TIE BARS FOR FIRST PANEL NEXT TO WELLS STREET PAVEMENT.
  3. ELEVATIONS ALONG BASELINE ARE LOCATED AT EVEN 25' INCREMENTS UNLESS NOTED.

PROJECT ENDS  
STA. 535+32.53



REVISIONS	
NAME	DATE

ILLINOIS DEPARTMENT OF TRANSPORTATION  
F.A.I. 90/94 (DAN RYAN EXPRESSWAY)  
63rd ST TO 59th ST (FRONTAGE ROAD & RAMPS)

**INTERSECTION DETAILS  
WELLS STREET  
W. 59th STREET INTERSECTION**

SCALE: 1"=10'      DRAWN BY: NJH  
DATE: October 29, 2004      CHECKED BY: RMG

M:\P\0468\CIVIL\AC-CM\90-94\Intersection\_Details\009502A.dwg 11/23/2004 03:09:47 PM