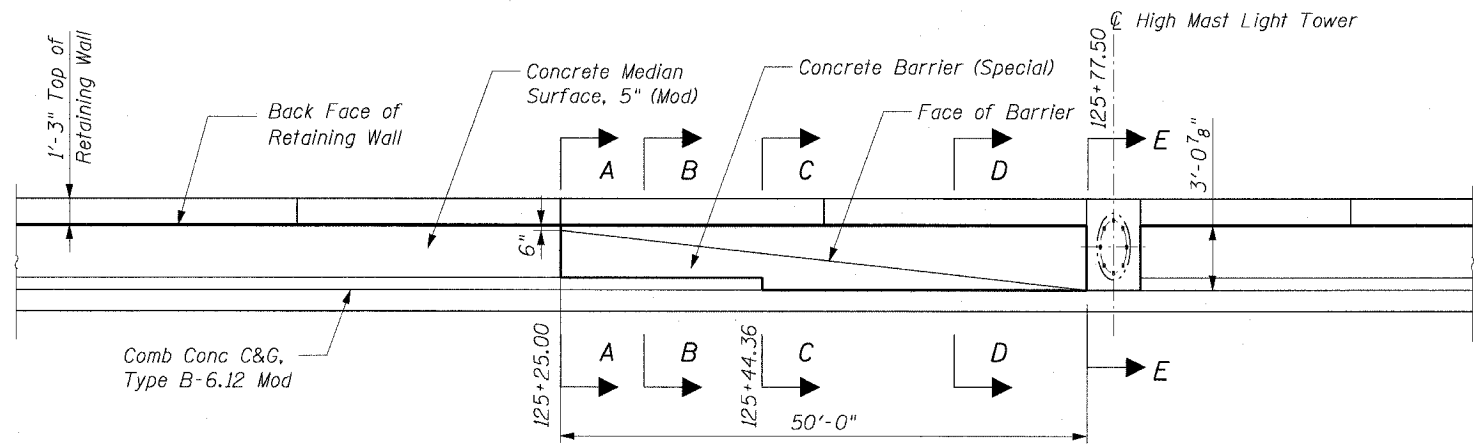
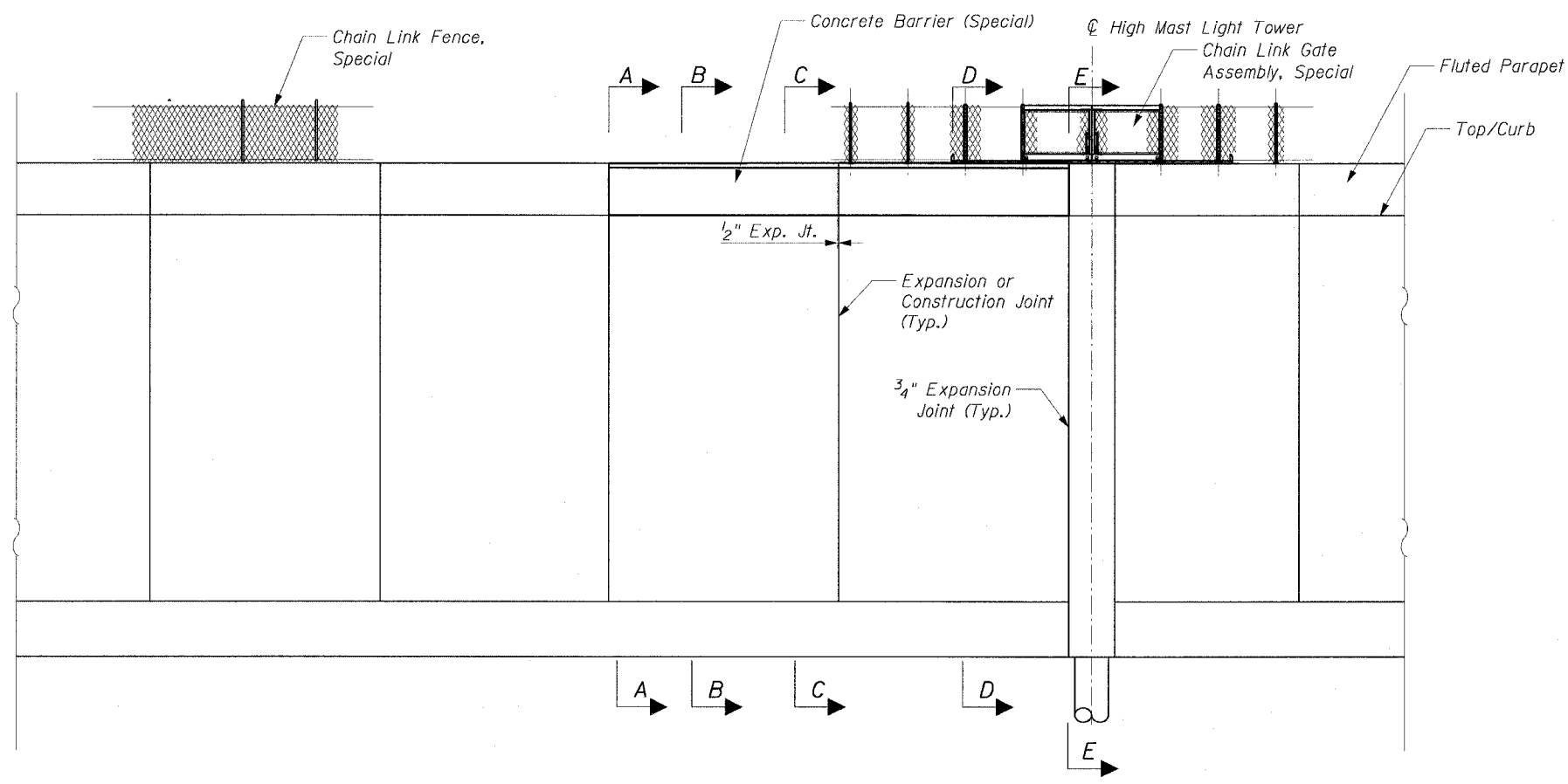


F.A.I. RTE.	SECTION	COUNTY	TOTAL SHEETS	SHEET NO.
90/94	2021-922PT.1-AC	COOK	460	127
STA.	TO STA.			
FED. ROAD DIST. NO. 1 ILLINOIS FED. AID PROJECT				

62693



PLAN



ELEVATION
CONCRETE BARRIER (SPECIAL) DETAIL

NOTE
1. For Sections A-A, B-B, And C-C See Roadway Detail Sheet 11.



REVISIONS	
NAME	DATE

ILLINOIS DEPARTMENT OF TRANSPORTATION
F.A.I. 90/94 (DAN RYAN EXPRESSWAY)
63rd ST TO 59th ST (FRONTAGE ROAD & RAMPS)
ROADWAY DETAILS
CONCRETE BARRIER (SPECIAL) DETAIL
WENTWORTH AVENUE STA. 125+25

SCALE: NONE
DATE: October 29, 2004

DRAWN BY: NJH
CHECKED BY: RMG

m:\p\040687\civil\40687\roadway detail\102900102.dwg 10/27/2004 3:59:24 PM