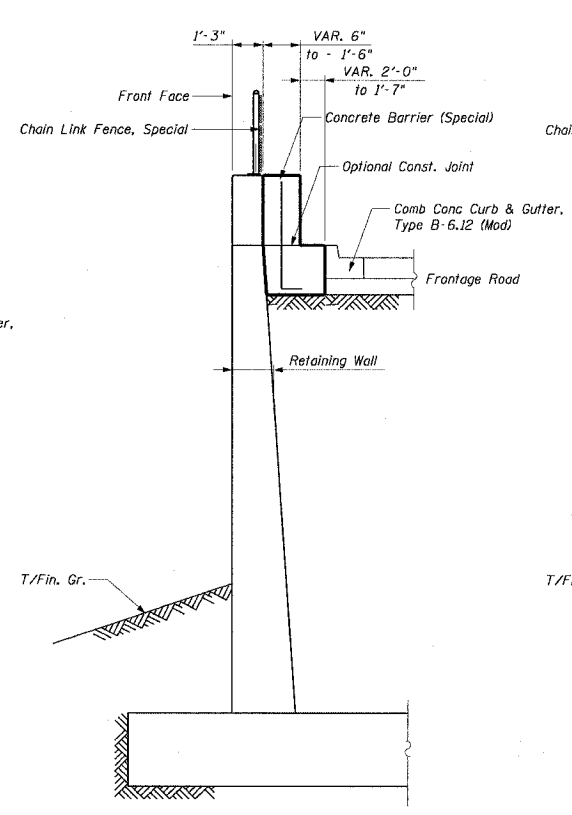
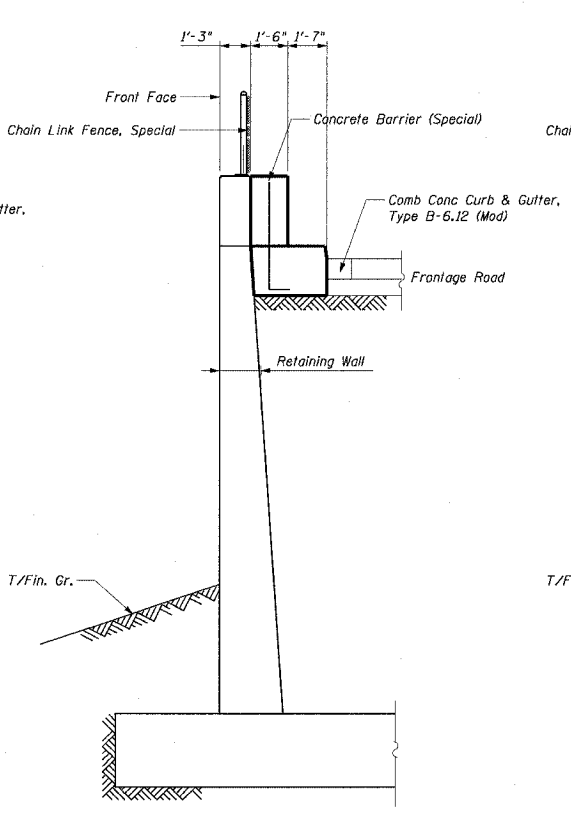


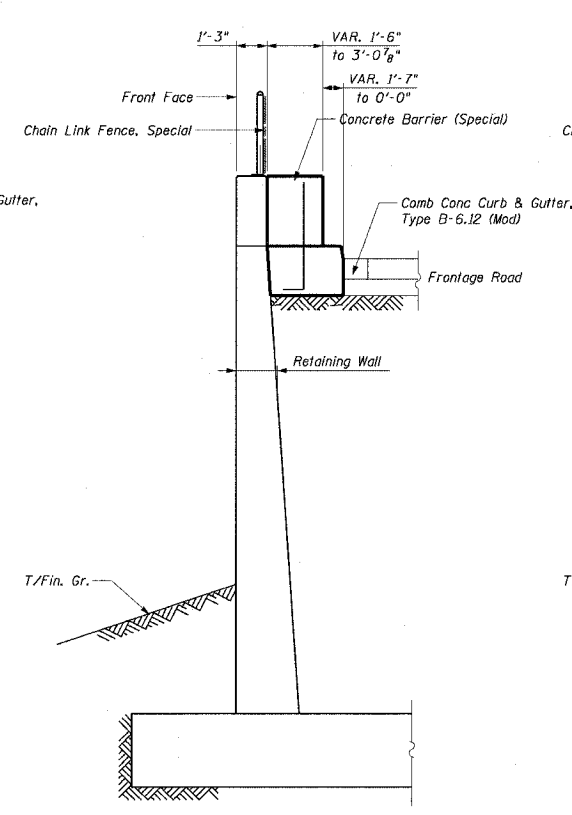
SECTION A-A



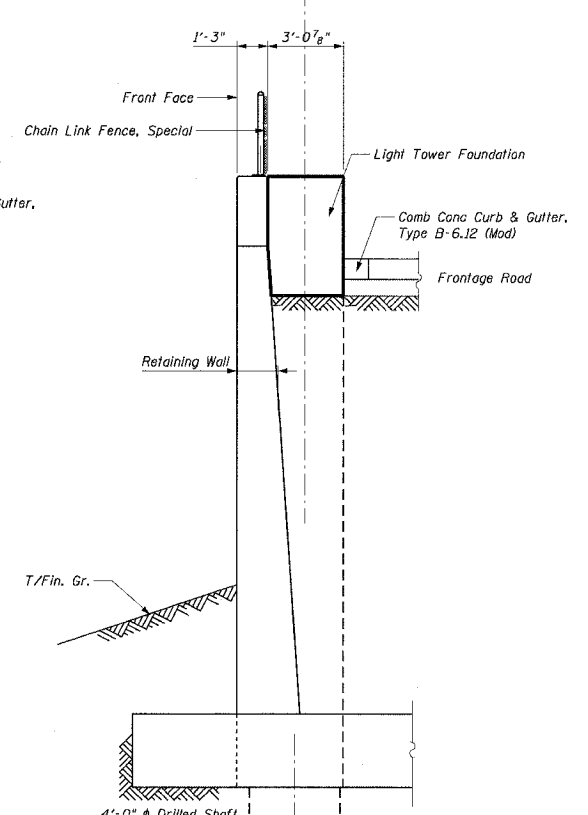
SECTION B-B



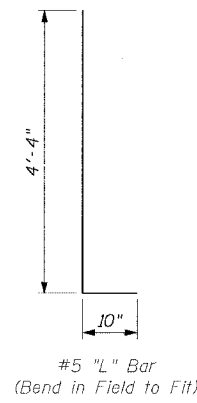
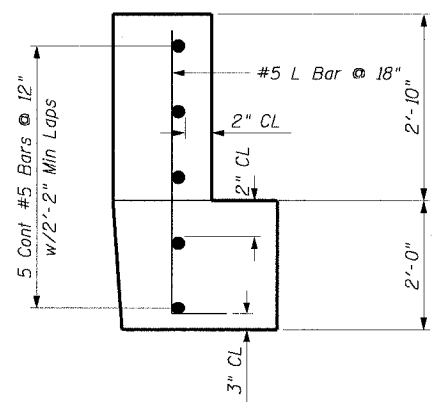
SECTION C-C
STA. 125+44.36



SECTION D-D



SECTION E-E
STA. 125+77.50



NOTES:

1. For Location of Sections A-A, B-B and C-C See Roadway Detail Sheet 10.
2. Reinforcement is included in the cost of Concrete Barrier (Special).
3. See Structural Details for Light Tower Foundation details.

LEGEND:



REVISIONS	
NAME	DATE

ILLINOIS DEPARTMENT OF TRANSPORTATION
F.A.I. 90/94 (DAN RYAN EXPRESSWAY)
63rd ST TO 59th ST (FRONTAGE ROAD & RAMPS)

ROADWAY DETAILS
CONCRETE BARRIER (SPECIAL) DETAIL
WENTWORTH AVENUE STA. 125+25

SCALE: NONE DRAWN BY: NJH
DATE: October 29, 2004 CHECKED BY: RMG