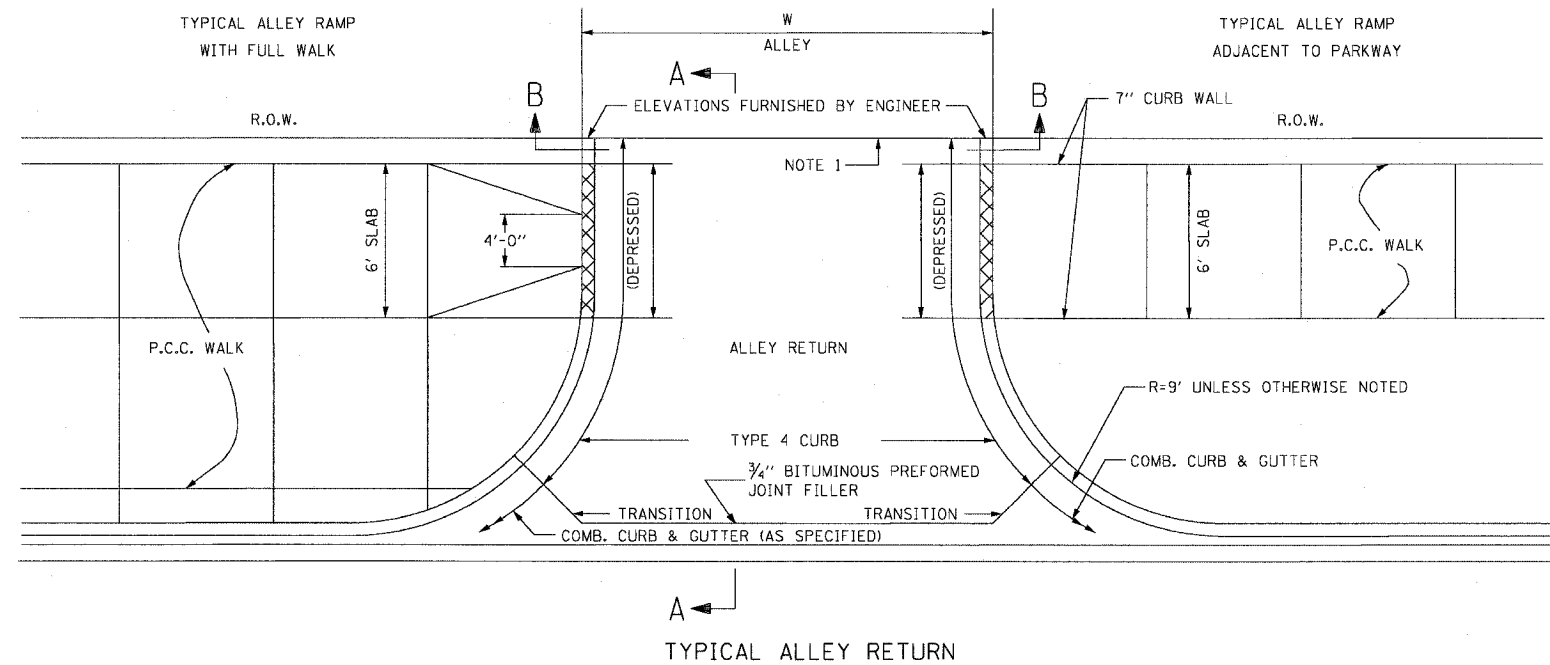


F.A.I. RTE.	SECTION	COUNTY	TOTAL SHEETS	SHEET NO.
90/94	2021-922PT.1-AC	COOK	460	134
STA.	TO STA.			
FED. ROAD DIST. NO. 1	ILLINOIS	FED. AID PROJECT		

62693

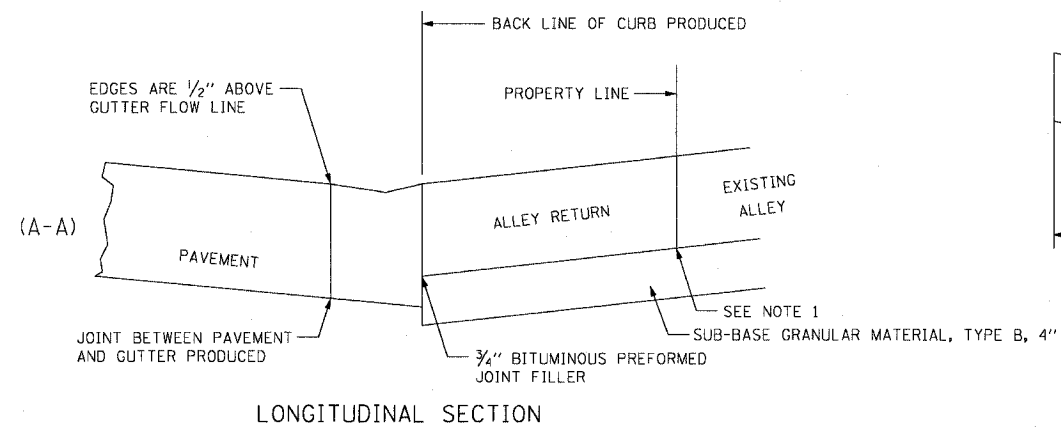
DETAIL OF ALLEY RETURN



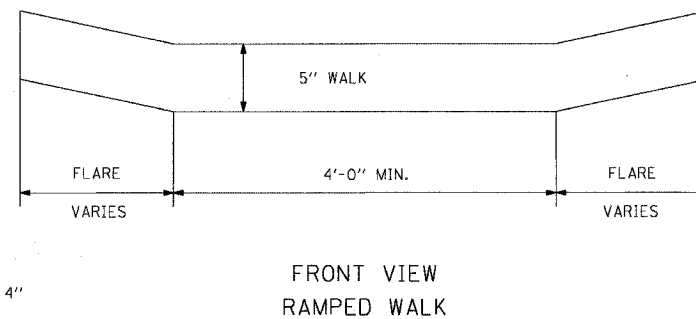
NOTE:

- WHEN A PORTION OF AN EXISTING PAVED ALLEY IS REMOVED TO ADJUST THE ALLEY PAVEMENT TO THE NEW GRADE, 3/4" BITUMINOUS PREFORMED JOINT FILLER SHALL BE PLACED ON THE PROPERTY LINE OTHERWISE THE JOINT IS OMITTED. THE COST OF FURNISHING AND PLACING THE 3/4" BITUMINOUS PREFORMED JOINT FILLER SHALL BE INCLUDED IN THE COST OF THE PORTLAND CEMENT CONCRETE ALLEY RETURN.
- BASIS OF PAYMENT - THE COMBINATION CONCRETE CURB AND GUTTER TYPE B.V-12, TYPE 3, OR OTHER TYPE SPECIFIED, SHALL BE MEASURED STRAIGHT ACROSS THE ALLEY RETURN. THE TYPE 4 CONCRETE CURB SHALL BE MEASURED FROM THE TRANSITION JOINT TO THE PROPERTY LINE.
- SAWED JOINTS SHALL BE SEALED WITH A POURED MATERIAL MEETING THE REQUIREMENTS OF SECTION 1050 OF THE SSRBC.

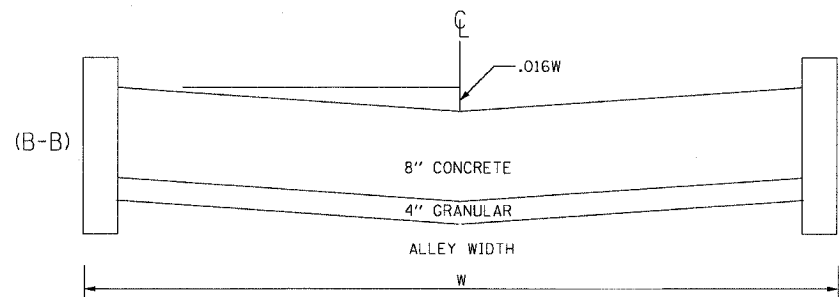
TYPICAL ALLEY RETURN



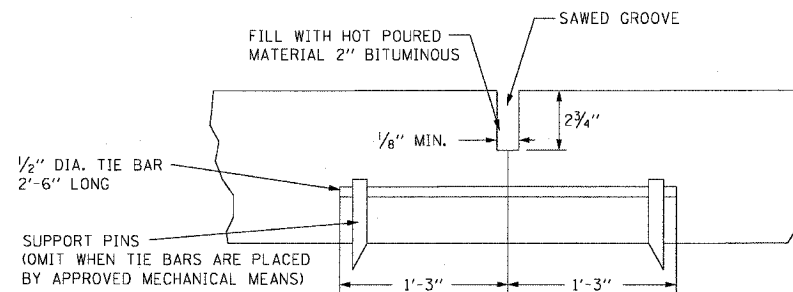
LONGITUDINAL SECTION



FRONT VIEW RAMPED WALK



CROSS SECTION AT PROPERTY LINE



DETAIL OF SAWED LONGITUDINAL JOINT
TO BE CONSTRUCTED ON CENTERLINE WHEN 'W' EXCEEDS 18'.

REVISIONS	
NAME	DATE

1/7/23/2004 0:32:28:43 PM