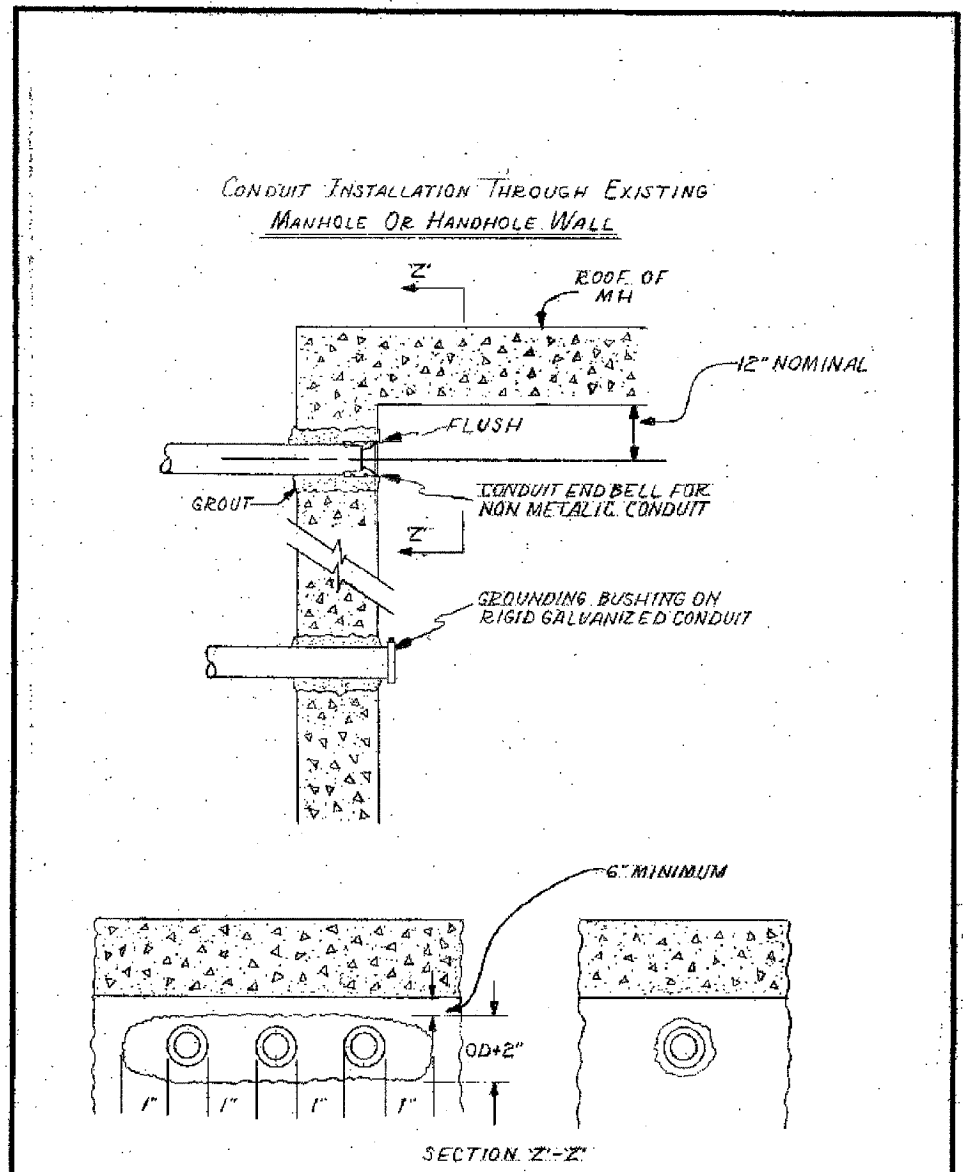


INSTALLATION METHOD OF INSTALLING CONDUIT UNDER PAVED ROADWAY		
<b>CITY OF CHICAGO</b> DEPT. OF STREETS AND SANITATION BUREAU OF ELECTRICITY DIVISION OF ELECTRICAL ENGINEERING		
DRAWN A.M. JOHNSON	CHECKED R. SICKONSKI	DESIGNED E.L. MARTIN
 ENGINEER OF ELECTRICITY		813
 8 1/2" X 14"		SCALE: N.T.S.



INSTALLATION METHOD OF INSTALLING CONDUIT THRU MANHOLE WALL		
<b>CITY OF CHICAGO</b> DEPT. OF STREETS AND SANITATION BUREAU OF ELECTRICITY DIVISION OF ELECTRICAL ENGINEERING		
DRAWN A.M. JOHNSON	CHECKED R. SICKONSKI	DESIGNED E.L. MARTIN
 ENGINEER OF ELECTRICITY		814
 8 1/2" X 14"		SCALE: N.T.S.

REVISIONS	NAME	DATE

BOE-2

ILLINOIS DEPARTMENT OF TRANSPORTATION  
F.A.I. 90/94 (DAN RYAN EXPRESSWAY)  
63rd ST TO 59th ST (FRONTAGE ROAD & RAMPS)

BOE STANDARD DETAILS

SCALE: NOT TO SCALE      DRAWN BY: HAR  
DATE: October 29, 2004      CHECKED BY: MS

M:\P\40466\CONV\40466-CONV\90-94\TRAFFIC SIGNALS\BOE08203-814.dwg 10/22/2004 09:55:00 AM