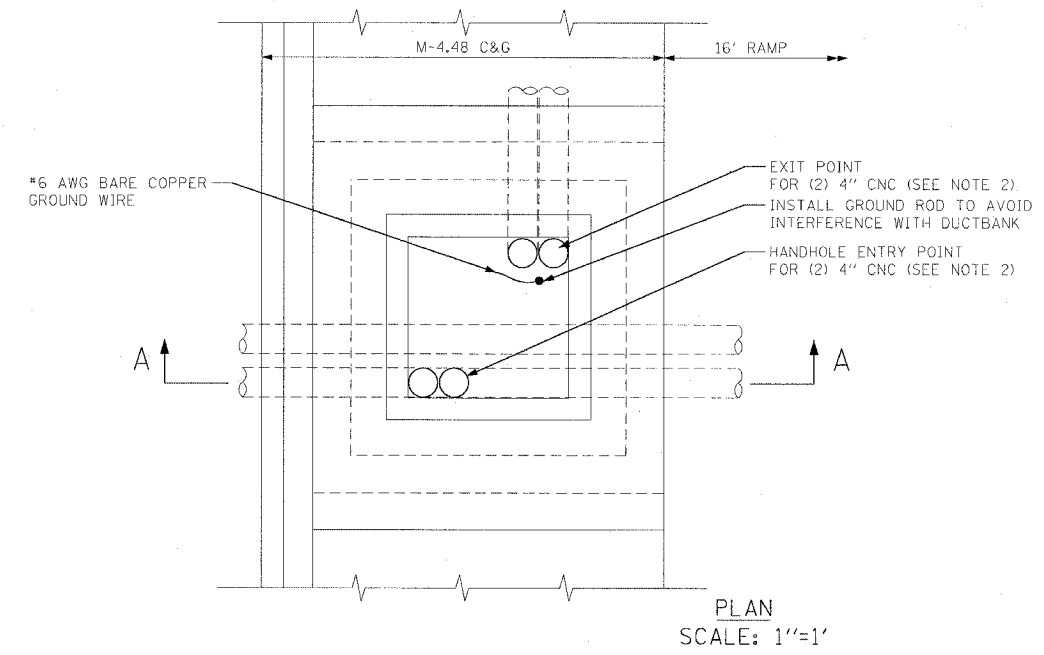


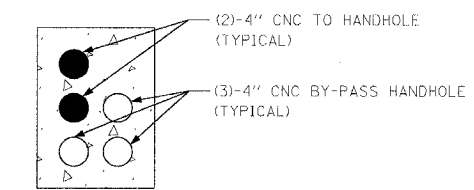
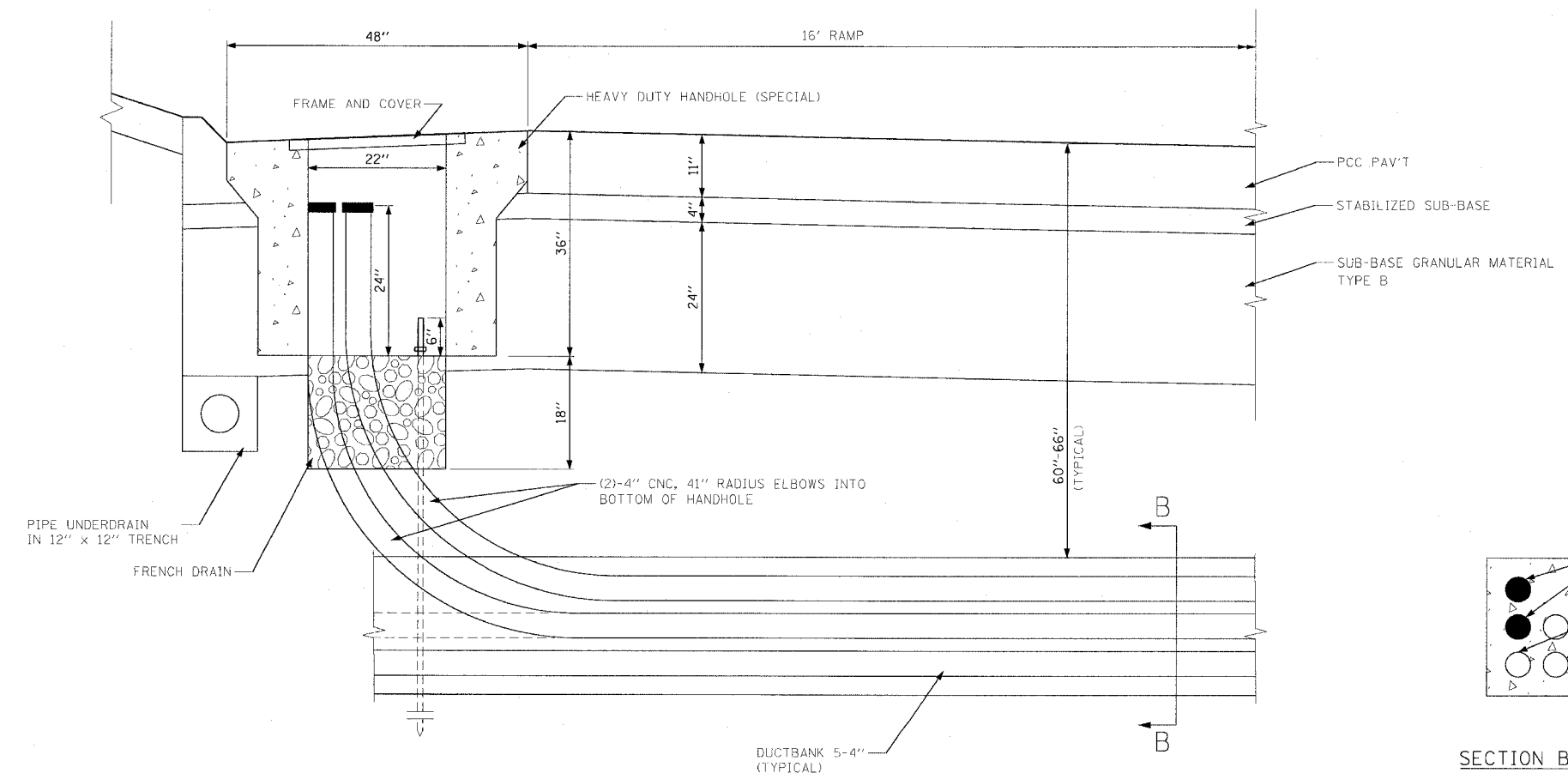
F.A.I. RTE.	SECTION	COUNTY	TOTAL SHEETS	SHEET NO.
90/94	2021-922PT.1-AC	COOK	460	194
STA.	TO STA.			
FED. ROAD DIST. NO. 1	ILLINOIS	FED. AID PROJECT		

62693



NOTES:

1. ALL METALLIC ELEMENTS SHALL BE GROUND IN ACCORDANCE WITH THE NATIONAL ELECTRIC CODE (NEC), SECTION 250, GROUNDING, METAL COVERS AND OTHER EXPOSED CONDUCTIVE SURFACES SHALL BE BONDED IN ACCORDANCE WITH NEC ARTICLE 250.96 (A).
2. ENTRY POINT FOR THE 4" CNC SHALL BE ON THE OPPOSITE SIDE OF THE HANDHOLE FROM THE 4" CNC EXIT POINT.
3. REFER TO SHEET EI-102 FOR DUCTBANK DETAILS.
4. REFER TO SHEET EI-106 FOR HANDHOLE DETAILS.



EI-110A

REVISIONS	
NAME	DATE

ILLINOIS DEPARTMENT OF TRANSPORTATION
F.A.I. 90/94 (DAN RYAN EXPRESSWAY)
63rd ST TO 59th ST (FRONTAGE ROAD & RAMPS)

ENCASED CONDUIT TO HANDHOLE DETAIL

SCALE: AS SHOWN
DATE: October 29, 2004
DRAWN BY: VG
CHECKED BY: TM

SINGH 300 W. ADAMS ST.
CHICAGO, IL 60606
SINGH & ASSOCIATES, INC. TEL: (312) 629-0240
CONSULTING ENGINEERS FAX: (312) 629-8449

10/21/2004 02:26:00 PM