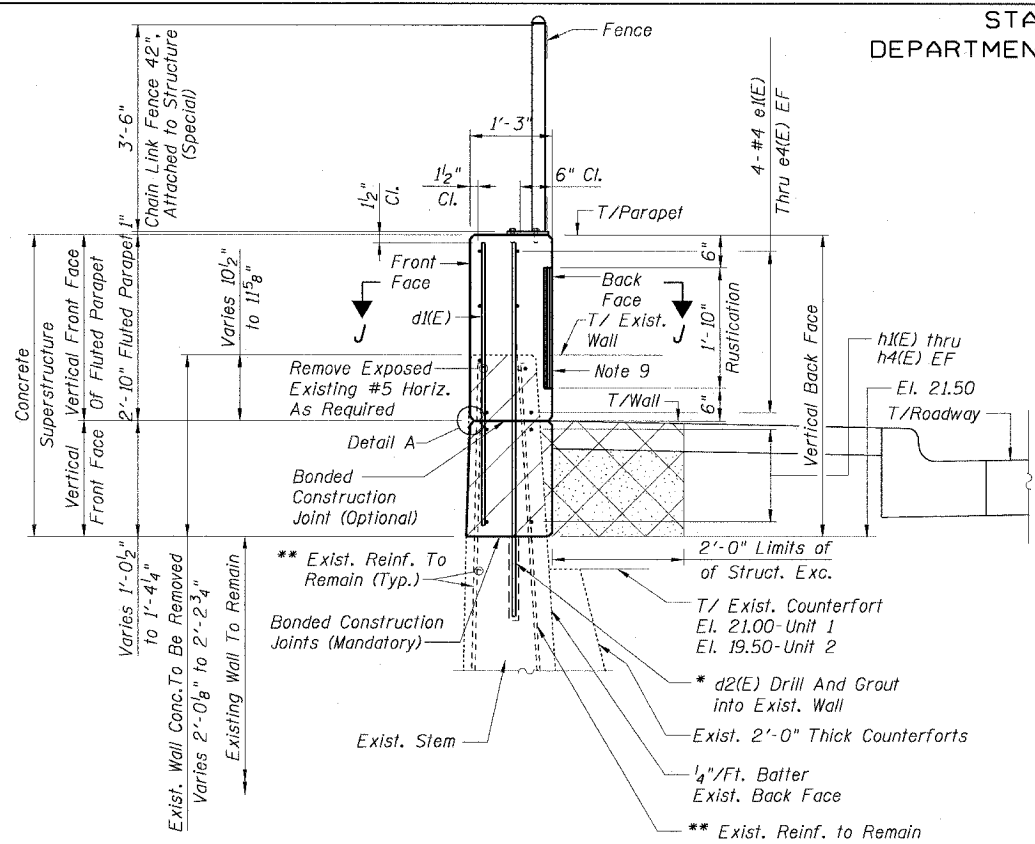


STATE OF ILLINOIS
DEPARTMENT OF TRANSPORTATION

F.A.I. RTE.	SECTION	COUNTY	TOTAL SHEETS	SHEET NO.
90/94	2021-922PT.1-AC	COOK	460	209
STA.	TO STA.			
FED. ROAD DIST. NO. 1	ILLINOIS	FED. AID PROJECT		

BILL OF MATERIAL 62693

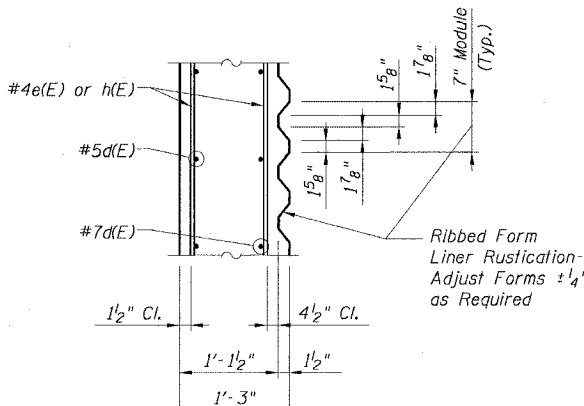
Bar	No.	Size	Length	Shape
d1(E)	60	#5	3'-9"	
d2(E)	109	#7	5'-4"	
d3(E)	310	#5	4'-5"	
d4(E)	310	#7	5'-9"	
d5(E)	44	#5	4'-0"	
e1(E)	8	#4	23'-6"	
e2(E)	8	#4	21'-9"	
e3(E)	8	#4	25'-6"	
e4(E)	8	#4	36'-0"	
e5(E)	40	#4	31'-8"	
e6(E)	32	#4	29'-9"	
e7(E)	8	#4	39'-9"	
h1(E)	4	#4	23'-6"	
h2(E)	4	#4	21'-9"	
h3(E)	4	#4	25'-6"	
h4(E)	4	#4	36'-0"	
h5(E)	30	#4	31'-8"	
h6(E)	24	#4	29'-9"	
h7(E)	6	#4	39'-9"	
Item	Unit	Quantity		
Reinforcement Bars, Epoxy Coated	Pound	10,500		



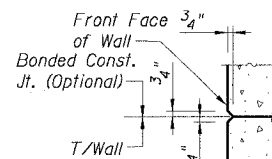
TYPICAL TOP OF WALL SECTION-UNITS 1 AND 2

* Drill & Grout d2(E) & d4(E) Bars in 1 1/8" Dia. drilled holes with a minimum depth of 1'-3", according to Article 584 of the Standard Specifications. (Cost included with Reinforcement Bars, Epoxy Coated)

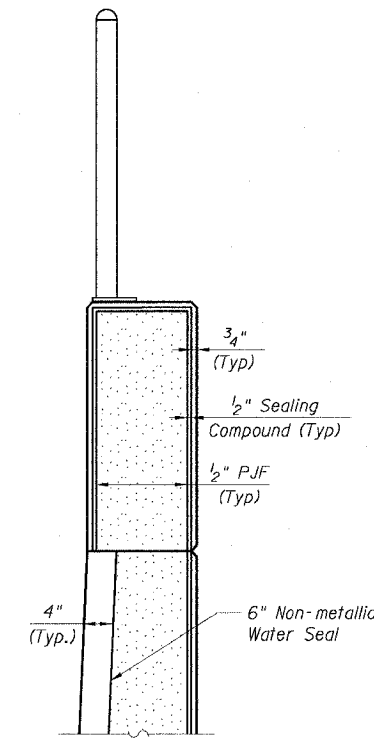
** Existing reinforcing steel which is exposed by the concrete removal process, but which is to remain partially embedded in the existing structure, shall be cleaned to be free of existing concrete and rust, straightened if necessary, and recast into the new concrete. (Cost included with Concrete Removal).



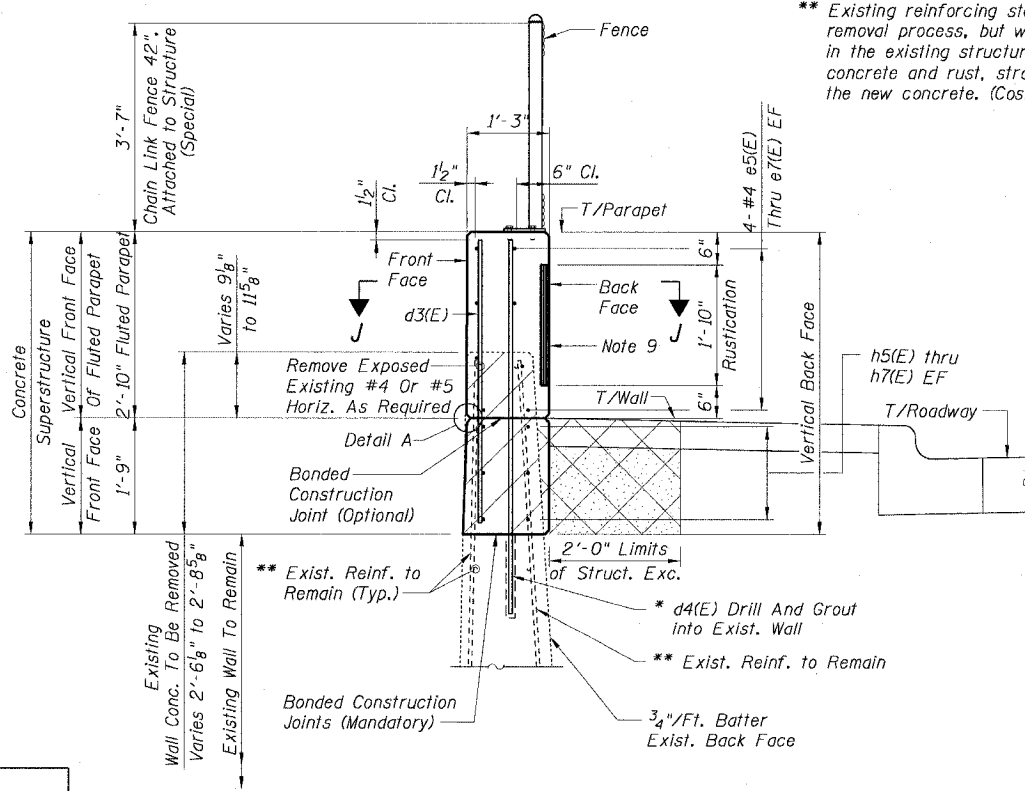
SECTION J-J



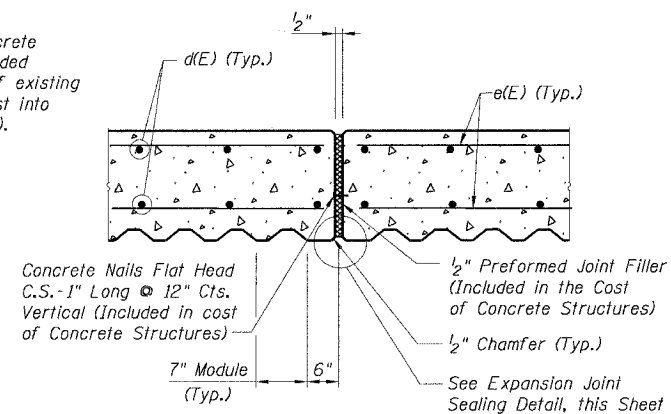
DETAIL A



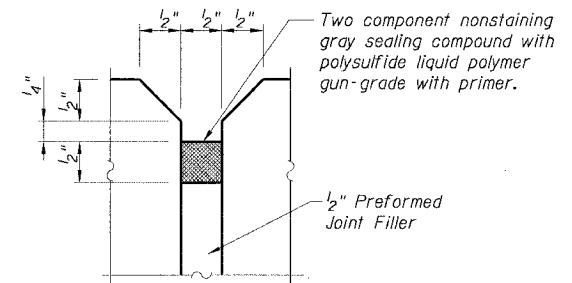
EXPANSION JOINT



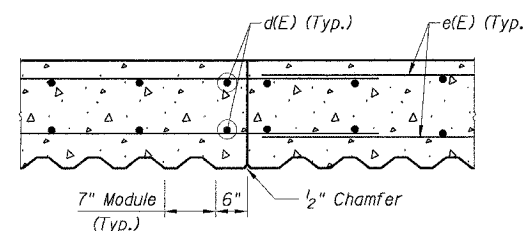
TYPICAL TOP OF WALL SECTION-UNITS 3, 4, 5, 6 AND 7



EXPANSION JOINT DETAIL



EXPANSION JOINT SEALING DETAIL



CONSTRUCTION JOINT DETAIL

LEGEND:

- Structure Excavation
- Porous Granular Embankment
- Concrete Removal

REVISIONS	
NAME	DATE

15-3 of 3
ILLINOIS DEPARTMENT OF TRANSPORTATION
F.A.I. 90/94 (DAN RYAN EXPRESSWAY)
WALL SECTIONS & DETAILS
SOUTH WENTWORTH AVENUE RETAINING WALL
WEST 64th STREET TO WEST 63rd STREET
SECTION (2021-922 PT. 1 & 2 2122-922 PT) R-4
STATION 99+50 TO 103+66
COOK COUNTY S.N. 016-W901
SCALE: None DRAWN BY: RSB
DATE: October 29, 2004 CHECKED BY: DAS