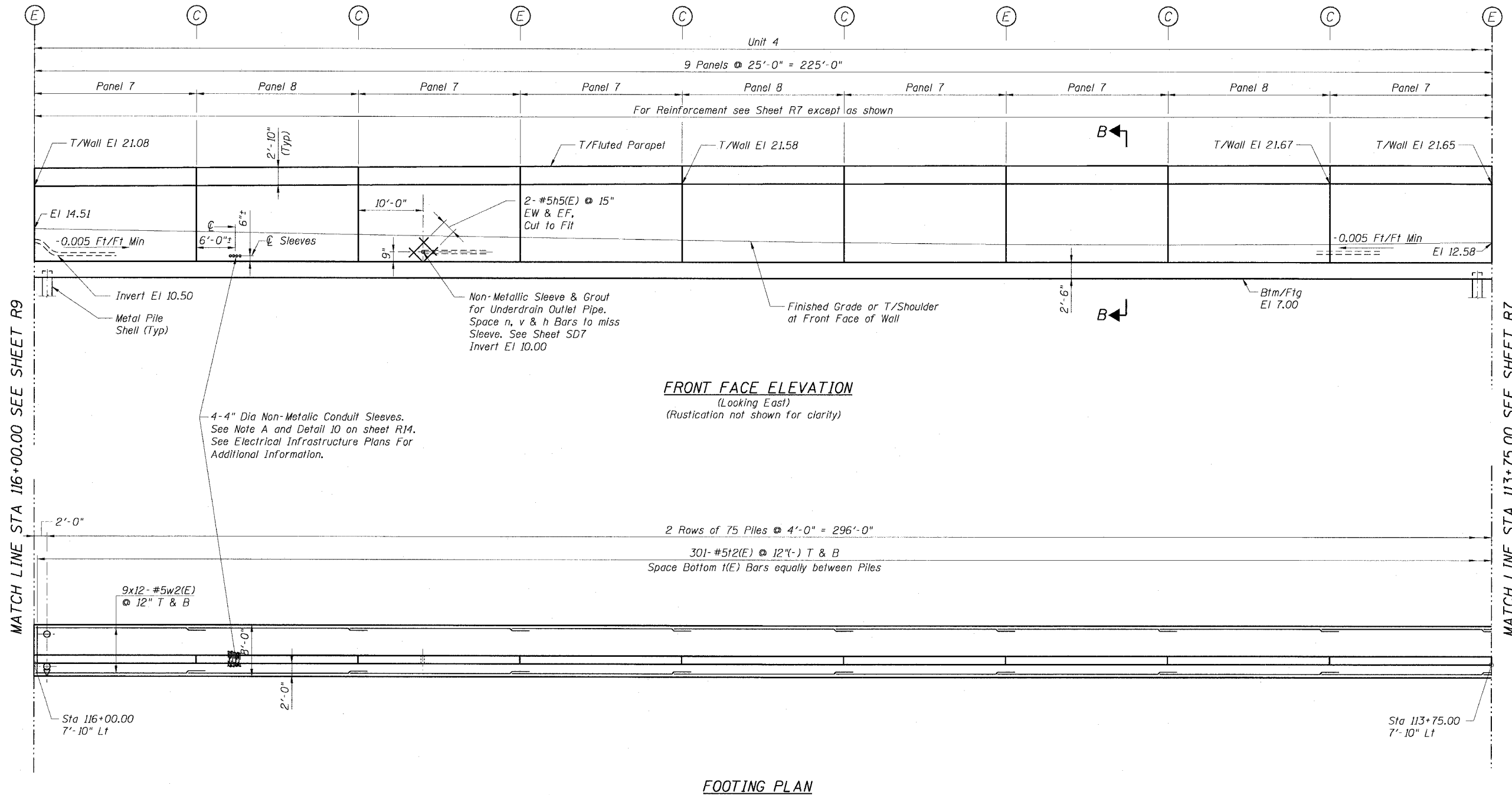


STATE OF ILLINOIS
DEPARTMENT OF TRANSPORTATION

F.A.I. RTE.	SECTION	COUNTY	TOTAL SHEETS	SHEET NO.
90/94	2021-922PT.1-AC	COOK	460	235
STA.	TO STA.			
FED. ROAD DIST. NO. 1	ILLINOIS	FED. AID PROJECT		

62693



FRONT FACE ELEVATION
(Looking East)
(Rustication not shown for clarity)

FOOTING PLAN

NOTE A:

Conduits and conduit sleeves shall be installed to miss wall reinforcing bars. Contractor must place n(E) and v(E) bars in between sleeves. The cost of furnishing and installing sleeves and grout shall be included in the cost of "Concrete Structures".



REVISIONS	
NAME	DATE

Sheet R8 of 28
ILLINOIS DEPARTMENT OF TRANSPORTATION
F.A.I. 90/94 (DAN RYAN EXPRESSWAY)
DETAILED PLAN AND ELEVATION
SOUTH WENTWORTH AVENUE RETAINING WALL
WEST 59TH STREET TO WEST 63RD STREET
SECTION 2021-922PT.1-AC
STATION 111+25.00 TO 126+89.58
COOK COUNTY S.N. 016-W886
SCALE: None
DATE: October 29, 2004
DRAWN BY: ET
CHECKED BY: JSS/MM

MAP 40468 STRUCTURE 4-CR75C-S1W1886RT0910A24W886.S17 11/22/2004 11:01:01 AM