

STATE OF ILLINOIS
DEPARTMENT OF TRANSPORTATION

F.A.I. RTE.	SECTION	COUNTY	TOTAL SHEETS	SHEET NO.
90/94	2021-922PT.1-AC	COOK	460	256
STA.	TO STA.			
FED. ROAD DIST. NO. 1	ILLINOIS	FED. AID PROJECT	62693	

INDEX OF SHEETS

- Z1 General Plan I
- Z2 General Plan II
- Z3 Profile Grades
- Z4 Typical Sections
- Z5 Typical Sections
- Z6 Detailed Plan and Elevation
- Z7 Detailed Plan and Elevation
- Z8 Detailed Plan and Elevation
- Z9 Detailed Plan and Elevation
- Z10 Wall Sections
- Z11 Wall Sections and Step Details
- Z12 Wall Sections
- Z13 Temporary Soil Retention System and Detail
- Z14 Parapet Transition
- Z15 Fluted Parapet & Modified Barrier Details
- Z16 Reinforcement Details
- Z17 Soil Boring Logs
- Z18 Soil Boring Logs
- Z19 Soil Boring Logs
- Z20 Soil Boring Logs
- Z21 Soil Boring Logs

Item	Unit	Quantity
Rustication Finish	Sq Ft	7515
Porous Granular Embankment	Cu Yd	4470
Porous Granular Embankment, Special	Cu Yd	230
Temporary Soil Retention System	Sq Ft	16482
Removal of Existing Structures No. 3	Each	1
Structure Excavation	Cu Yd	5040
Concrete Superstructure	Cu Yd	90
Concrete Structures	Cu Yd	1384
Protective Coat	Sq Yd	1407
Reinforcement Bars, Epoxy Coated	Pound	203040
Pipe Underdrains for Structures, 6"	Foot	717
Chain Link Fence, 42" Attached to Structure (Special)	Foot	327
Chain Link Fence, 42" Gate (Special)	Each	1
Concrete Removal	Cu Yd	6

DESIGN SPECIFICATIONS

2002 AASHTO, Standard Specifications for Highway Bridges

DESIGN STRESSES

FIELD UNITS
f'c = 3,500 psi
fy = 60,000 psi (Reinf.)

NOTES:

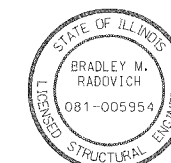
1. For General Notes see Sheet Z2.
2. For Typical Sections see Sheets Z4 and Z5.
3. For limits of Temporary Sheet Piling and/or Soil Retention System see Sheet Z13.
4. For Detailed Plan & Elevation, see Sheets Z6 to Z9.
5. For Wall Sections, see Sheets Z10 to Z12.
6. For Boring Logs, see Sheets Z17 to Z21.
7. For High Mast Light Tower Details, see LTF Sheets.
8. For Chain Link Fence, 42" Attached to Structure (Special) Details, see Sheet SD1.
9. For Chain Link Fence, 42" Gate (Special) Details see Sheets SD2-SD5.
10. For Retaining Wall Rustication Details, see Sheet SD6.

LEGEND

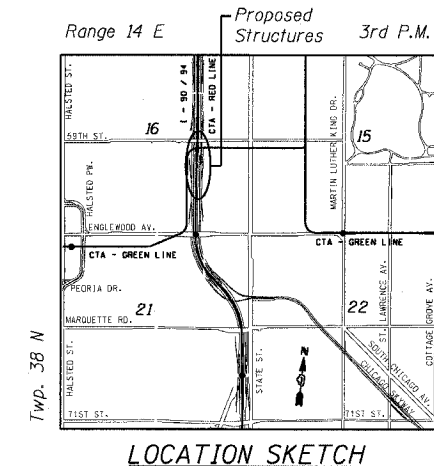
- (C) - Construction Joint
- (E) - Expansion Joint
- (S) - Soil Boring Location
- ▨ - Removal of Existing Structures
- ▩ - Chain Link Fence, Special
- ← - Direction of Traffic
- - New Structure
- - Existing Structure

ABBREVIATIONS:

- Btm Bottom
- BF Back Face
- EF Each Face
- EW Each Way
- FF Front Face
- Ftg Footing
- Lt Left
- Sta Station
- T Top

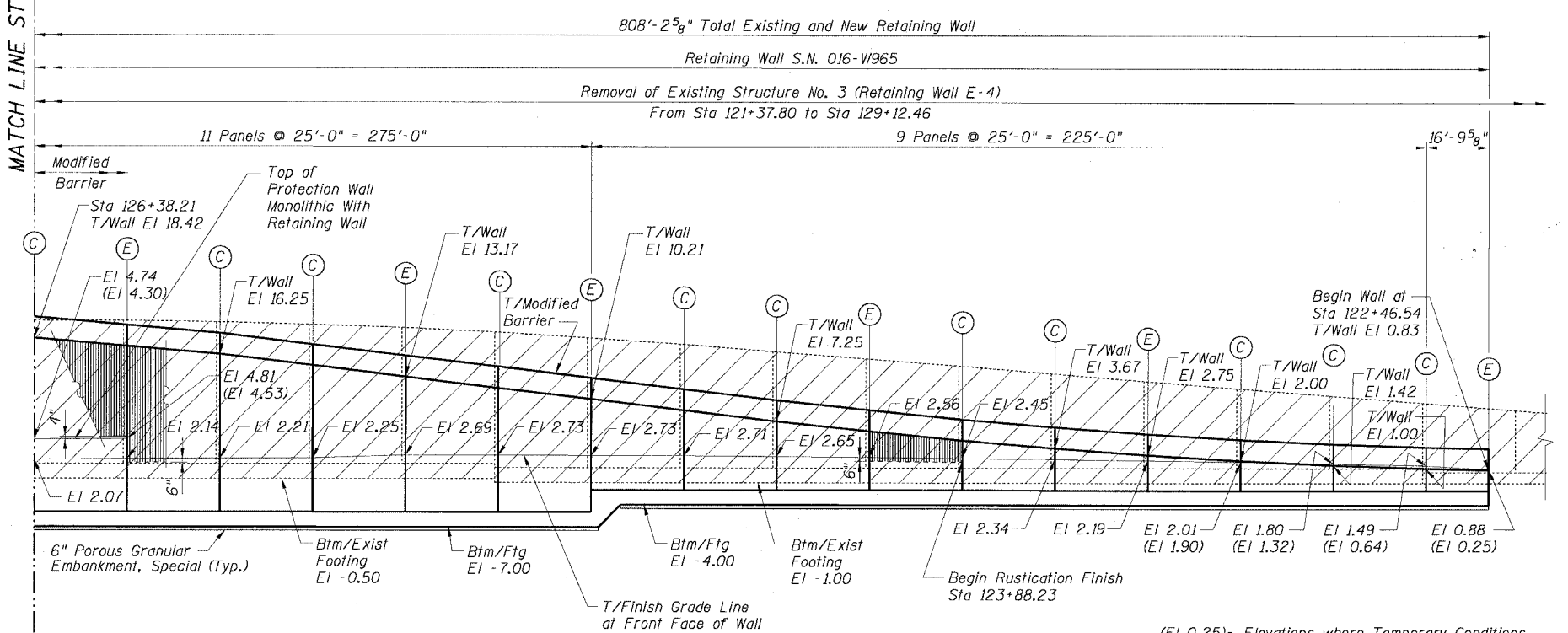
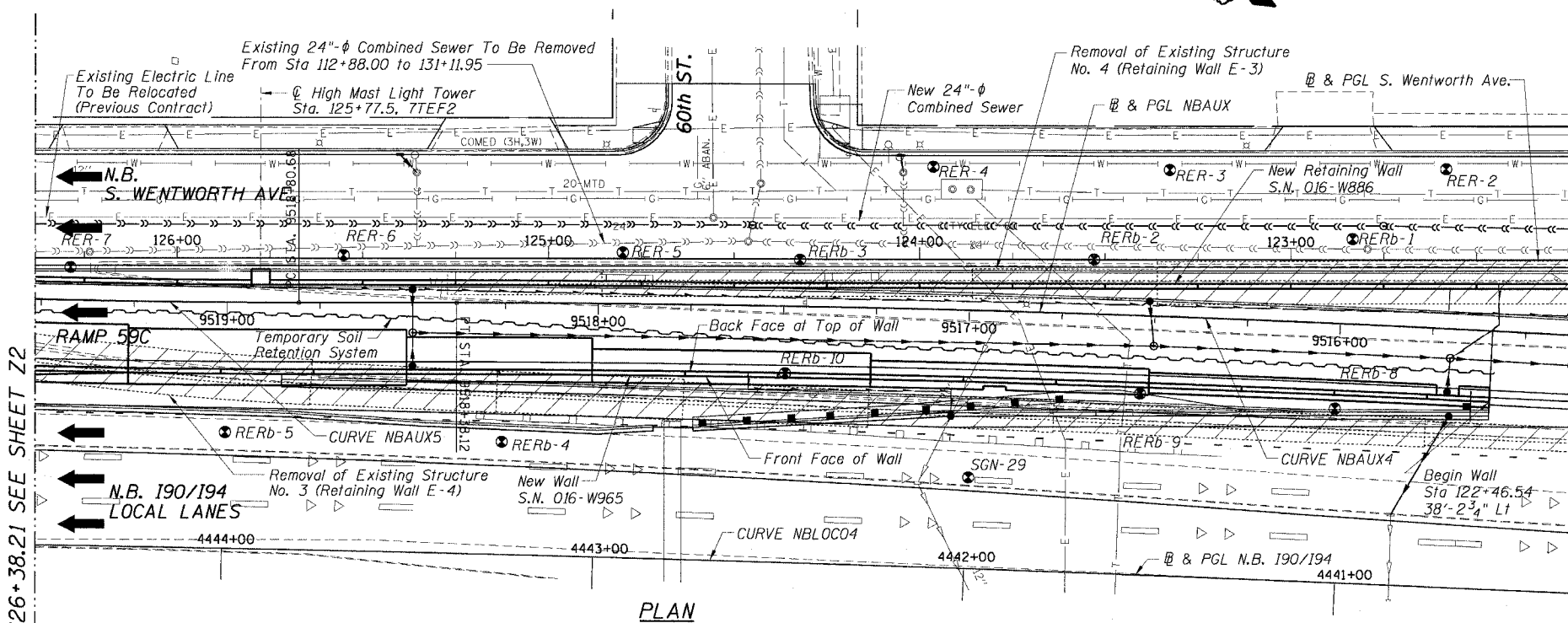


Bradley M. Radovich
11/24/04
EXPIRATION DATE: 11-30-2004



Bench Mark:
No. 3535. Found cross cut on Southerly Flange bolt of fire hydrant at the Northeast corner of 59th St. and Wentworth Ave. El 19.31

Existing Structure:
1. Cast-in-place cantiliver retaining wall E-3 on spread footing with variable height and 884'-0" long.
2. Cast-in-place cantiliver retaining wall E-4 on spread footing with variable height and 875'-5 3/4" long.



NAME	DATE

Sheet Z1 of Z1
ILLINOIS DEPARTMENT OF TRANSPORTATION
F.A.I. 90/94 (DAN RYAN EXPRESSWAY)
GENERAL PLAN I
SOUTH WENTWORTH AVENUE RETAINING WALL
WEST 59TH STREET TO WEST 63RD STREET
SECTION 2021-922 PT.1-AC
STATION 122+46.54 TO 130+53.87
COOK COUNTY S.N. 016-W887-W965
SCALE: None DRAWN BY: ET
DATE: October 29, 2004 CHECKED BY: JSS/MM

11/23/2004 01:22:29 PM