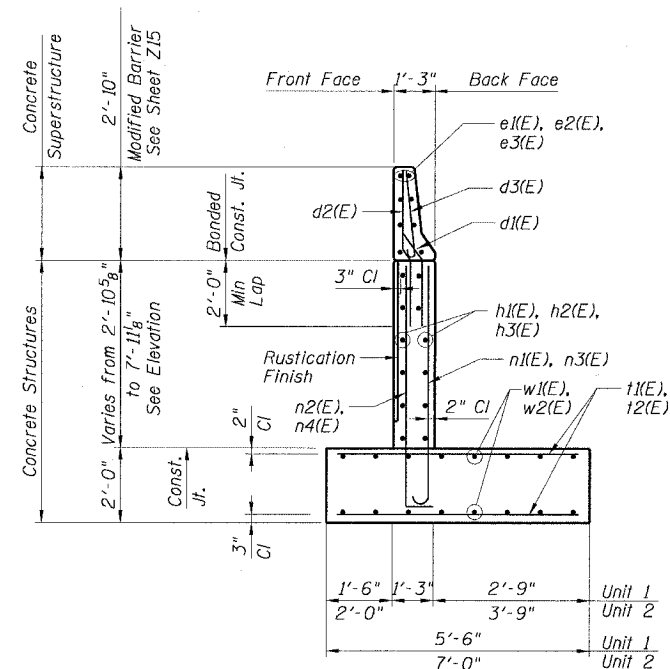


STATE OF ILLINOIS
DEPARTMENT OF TRANSPORTATION

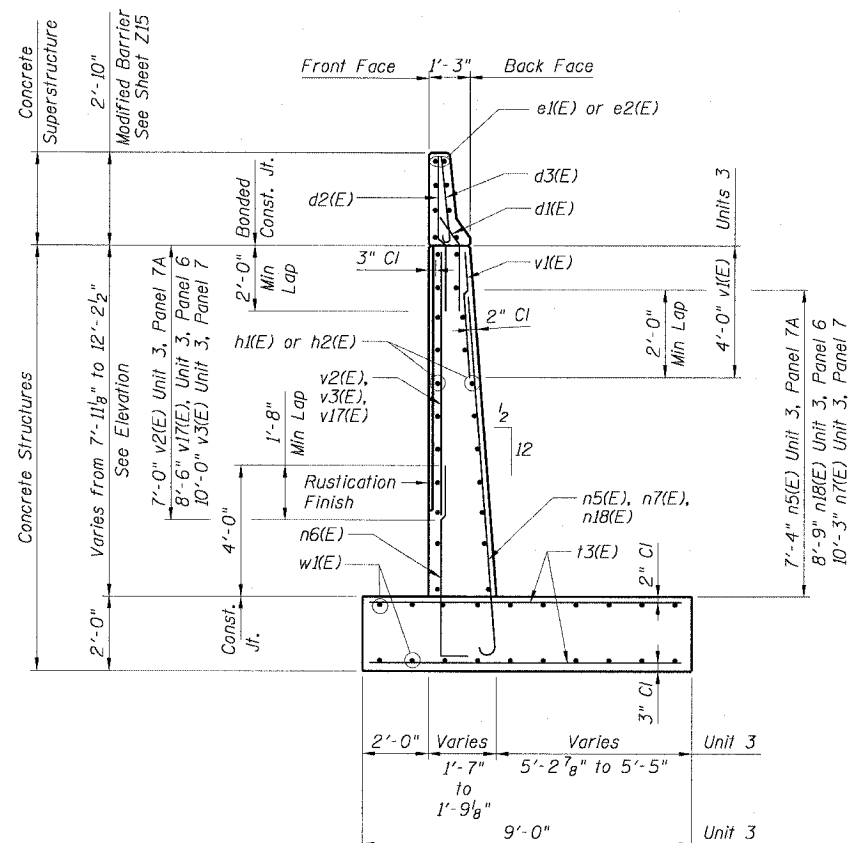
F.A.I. RTE.	SECTION	COUNTY	TOTAL SHEETS	SHEET NO.
90/94	2021-922PT.1-AC	COOK	460	265
STA.	TO STA.			
FED. ROAD DIST. NO. 1	ILLINOIS	FED. AID PROJECT		

62693



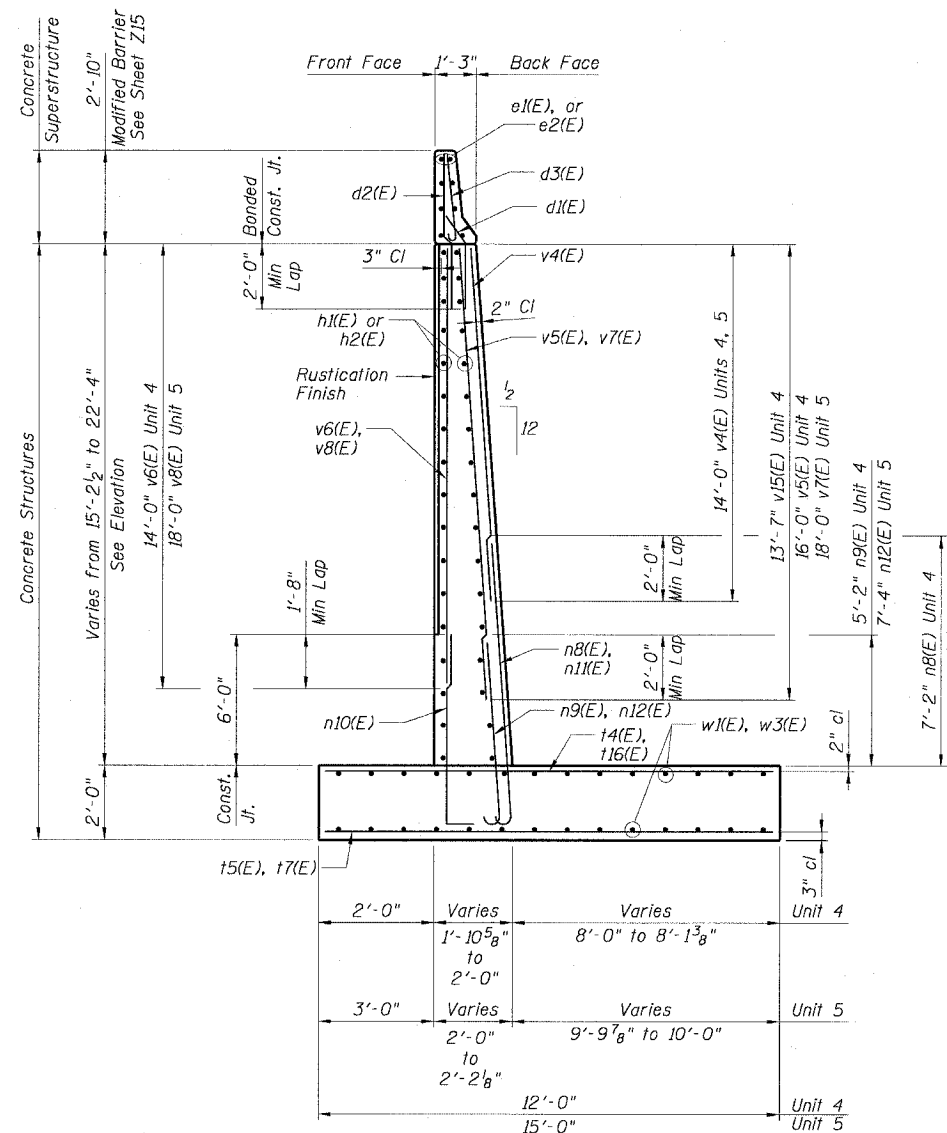
SECTION A-A

Unit 1, Sta 122+46.54 to Sta 123+38.25
Unit 2, Sta 123+38.50 to Sta 124+13.22



SECTION B-B

Unit 3, Sta 124+13.22 to Sta 124+88.21



SECTION C-C

Unit 4, Sta 124+88.21 to Sta 125+38.21
Unit 5, Sta 125+38.21 to Sta 126+13.21

Unit	Maximum Applied Bearing Pressure
1	2.8 Ksf
2	2.9 Ksf
3	3.7 Ksf
4	5.0 Ksf
5	5.1 Ksf
6	5.5 Ksf
7	5.3 Ksf
8	4.7 Ksf
9	3.9 Ksf
10	4.0 Ksf
12	4.0 Ksf

TABLE "A"

NOTES:

1. For Bar Bending Diagrams See Sheet Z16.
2. See Table "A" For Maximum Applied Bearing Pressure.
3. Sub-base for wall footings shall be well compacted per Standard Specifications.
4. Work Sheets Z6 to Z12 together.

REVISIONS	
NAME	DATE

Sheet Z10 of 21
ILLINOIS DEPARTMENT OF TRANSPORTATION
F.A.I. 90/94 (DAN RYAN EXPRESSWAY)
WALL SECTIONS
SOUTH WENTWORTH AVENUE RETAINING WALL
WEST 59TH STREET TO WEST 63RD STREET
SECTION 2021-922 PT.1-AC
STATION 122+46.54 TO 130+53.87
COOK COUNTY SN. 016-W887-W965
SCALE: None DRAWN BY: ET/CHD
DATE: October 29, 2004 CHECKED BY: JSS/MM

11/23/2004 01:28:23 PM I:\P\40468\Struct\4-Chart\90-94\W965\RT\0510A2\016-W965.SBT