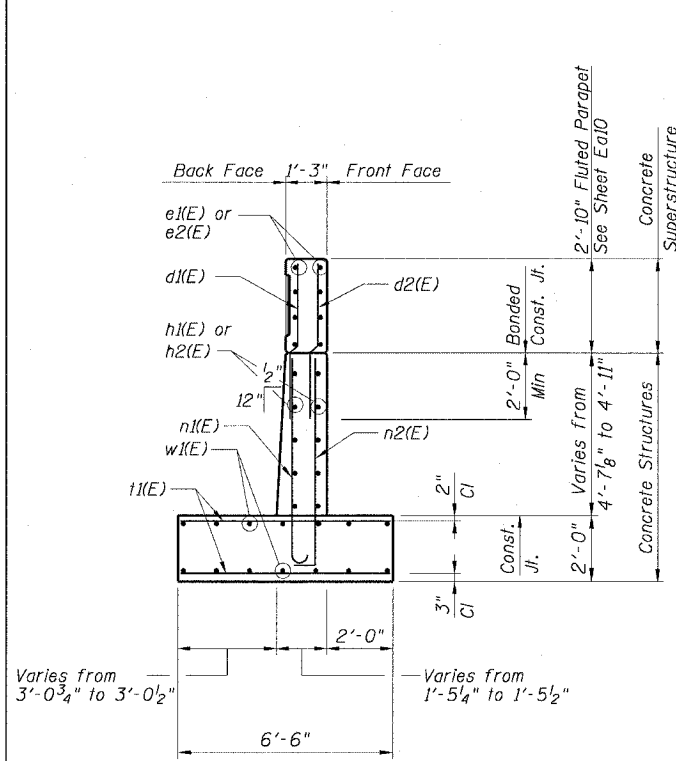


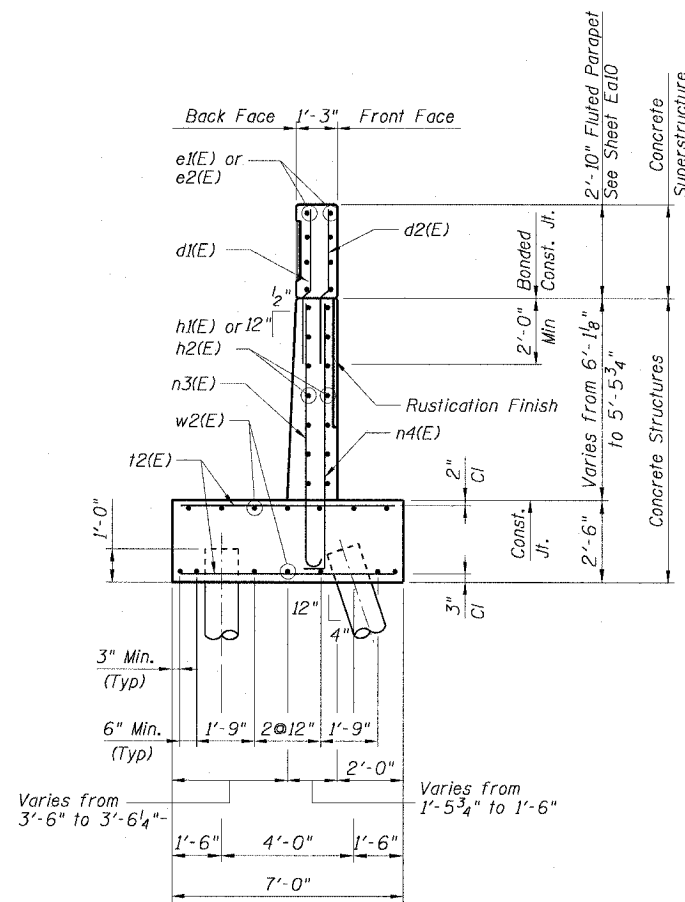
STATE OF ILLINOIS
DEPARTMENT OF TRANSPORTATION

F.A.I. RITE.	SECTION	COUNTY	TOTAL SHEETS	SHEET NO.
90/94	2021-922PT.1-AC	COOK	460	283
STA.	TO STA.			
FED. ROAD DIST. NO. 1	ILLINOIS	FED. AID PROJECT		

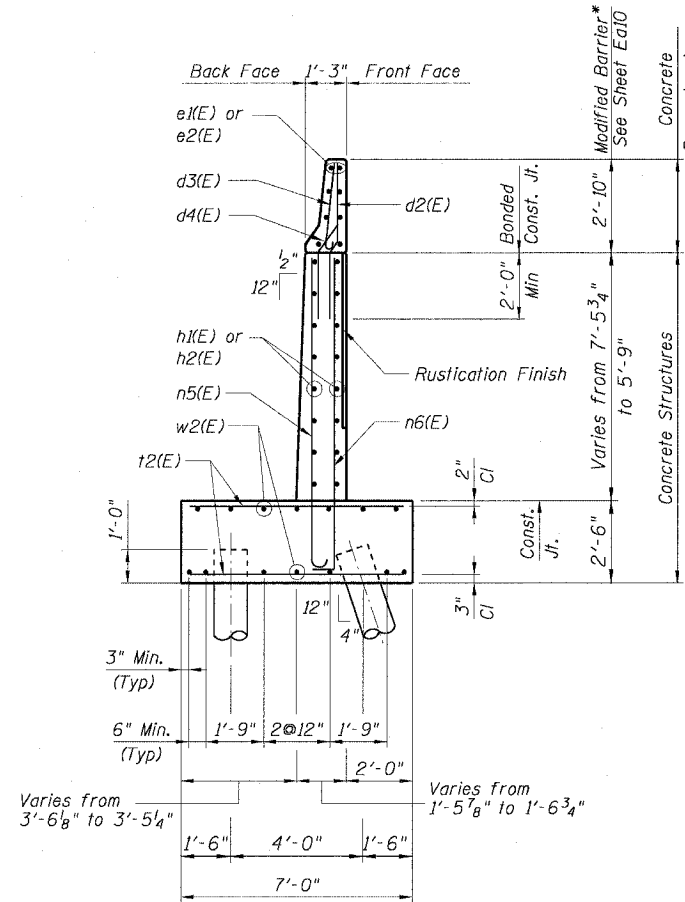
62693



SECTION A-A
Sta. 509+41.43 to Sta. 509+91.32
Maximum Applied Bearing Pressure: 2.35 Ksf

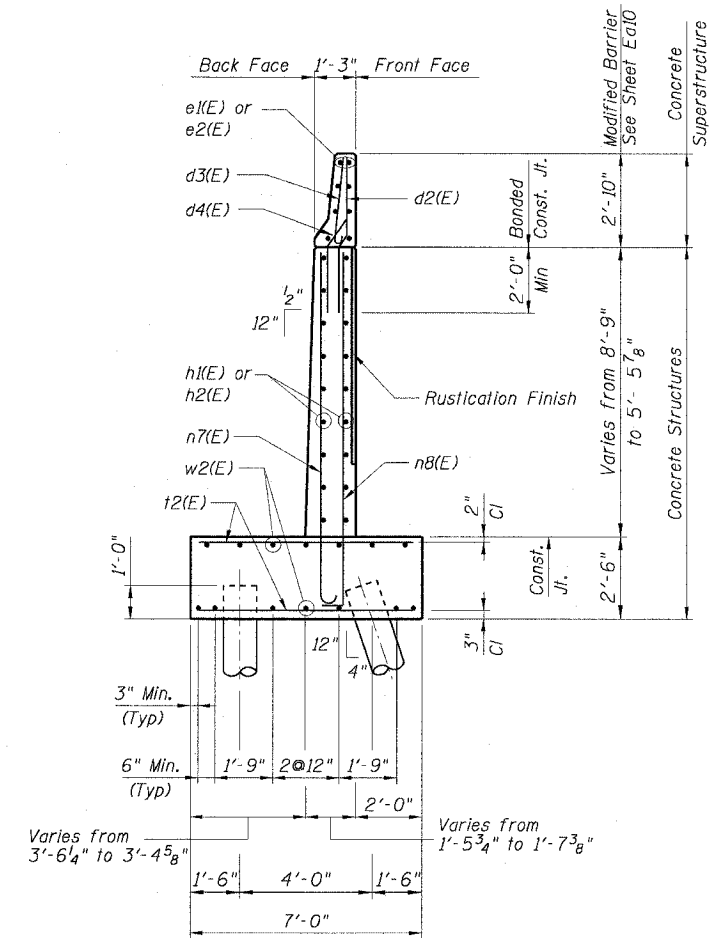


SECTION B-B
Sta. 509+91.32 to Sta. 510+65.95
Estimated Length: 33'
No. Req'd: 25 + 1 Test Pile



SECTION C-C
Sta. 510+65.95 to Sta. 511+40.61
Estimated Length: 30'
No. Req'd: 26

* Transition from
Fluted Parapet to Modified Barrier
Sta 510+90.82 to Sta 511+15.71



SECTION D-D
Sta. 511+40.61 to Sta. 512+15.40
Estimated Length: 27'
No. Req'd: 37 + 1 Test Pile

NOTES:

1. For Bar Bending Diagrams see Sheet Ea11.
2. Work Sheets Ea7 to Ea8 together.
3. Pile Type: 12" Metal Shell Cast-In-Place Concrete Piles.
Design Capacity: 30 Tons, Min. Wall Thickness for Metal Piles: 0.313"
4. Sub-Base for Wall Footings shall be well compacted per Standard Specifications.

REVISIONS		ILLINOIS DEPARTMENT OF TRANSPORTATION F.A.I. 90/94 (DAN RYAN EXPRESSWAY) WALL SECTIONS SOUTH WELLS STREET RETAINING WALL WEST 63RD STREET TO WEST 62ND STREET SECTION (2021-922PT.1-AC) STATION 509+41.43 TO 513+00.04 COOK COUNTY SN. 016-W907
NAME	DATE	
		SCALE: None
		DATE: October 29, 2004
		DRAWN BY: ET/CHD
		CHECKED BY: CUG/AJS

Sheet Ea7 of 12

M:\V-40468\Struct\4-Corr\SC\SN\W907\RT090072\016-W907.dwg

11/23/2004 11:08:19 AM