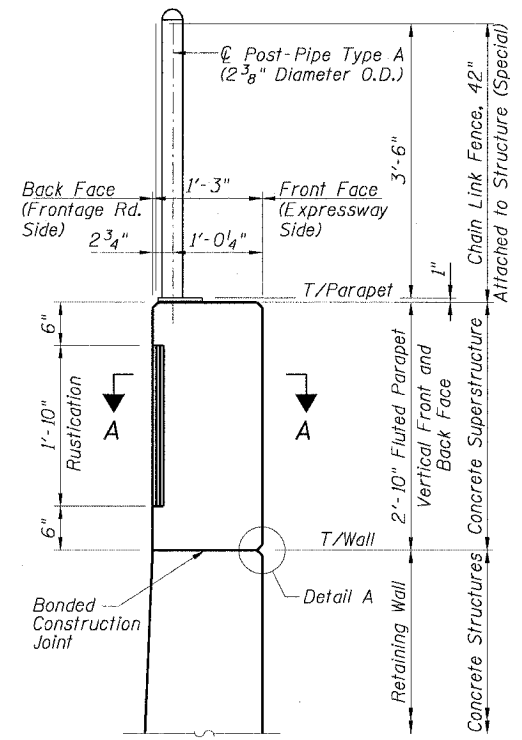


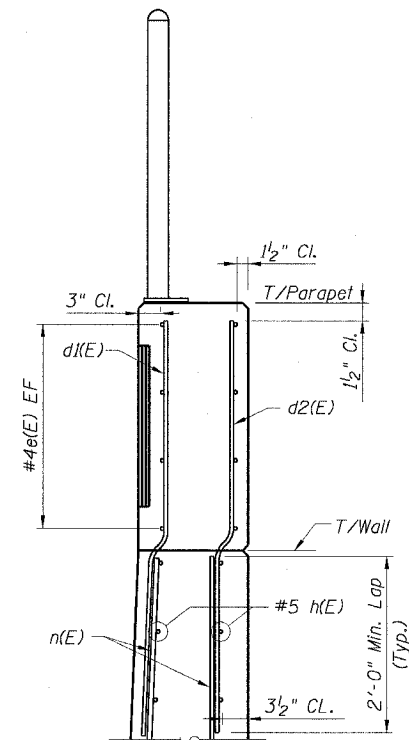
STATE OF ILLINOIS  
DEPARTMENT OF TRANSPORTATION

F.A.I. RTE.	SECTION	COUNTY	TOTAL SHEETS	SHEET NO.
90/94	2021-922PT.1-AC	COOK	460	286
STA.	TO STA.			
FED. ROAD DIST. NO. 1 ILLINOIS FED. AID PROJECT				

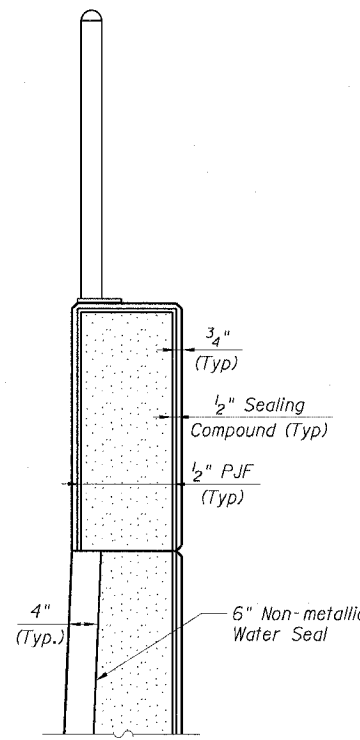
62693



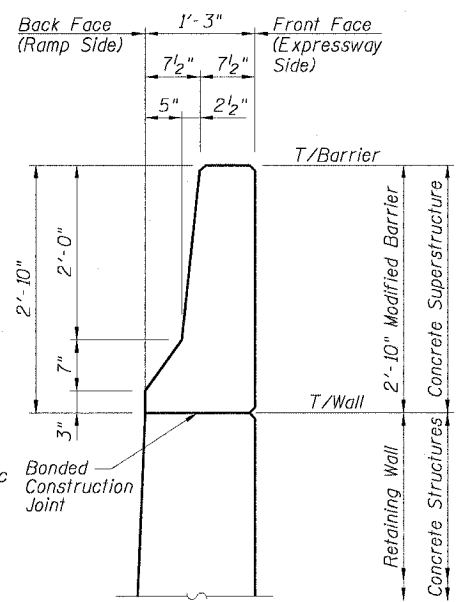
DIMENSIONS



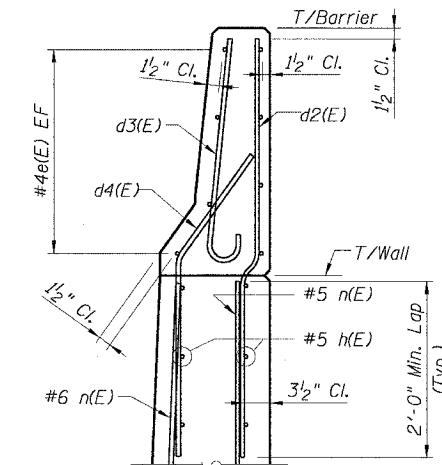
REINFORCING



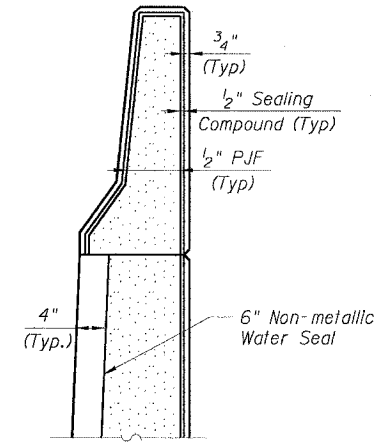
EXPANSION JOINT



DIMENSIONS



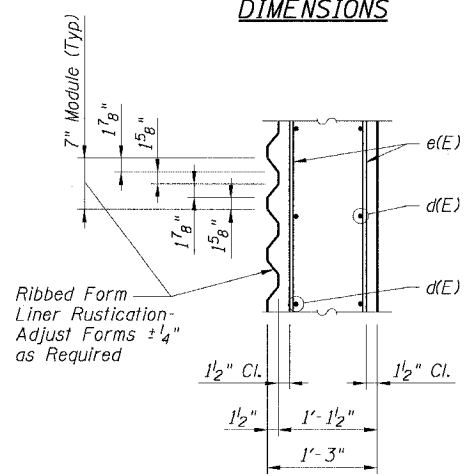
REINFORCING



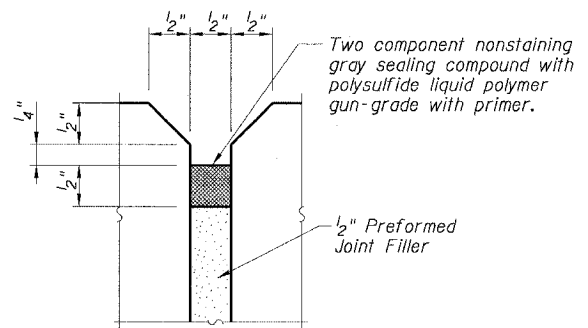
EXPANSION JOINT

TYPICAL SECTIONS - FLUTED PARAPET

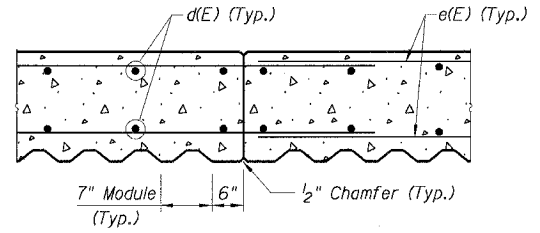
(Looking North)



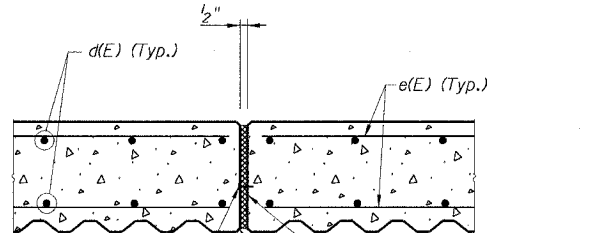
SECTION A-A



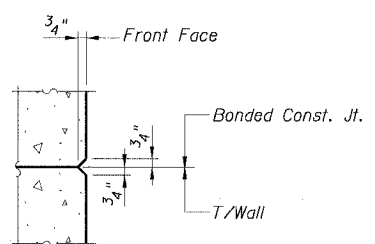
EXPANSION JOINT SEALING DETAIL



CONSTRUCTION JOINT DETAIL



EXPANSION JOINT DETAIL



DETAIL A

TYPICAL SECTIONS - MODIFIED BARRIER

(Looking North)

LEGEND:

- Sealing Compound
- Preformed Joint Filler

NOTES:

- For Bar Bending Diagrams see Sheet Ea11.
- For Chain Link Fence, 42" Attached to Structure (Special) Detail see Sheet SD1.

REVISIONS	
NAME	DATE

Sheet Ea10 of 12  
ILLINOIS DEPARTMENT OF TRANSPORTATION  
F.A.I. 90/94 (DAN RYAN EXPRESSWAY)  
FLUTED PARAPET & MODIFIED BARRIER DETAILS  
SOUTH WELLS STREET RETAINING WALL  
WEST 63RD STREET TO WEST 62ND STREET  
SECTION (2021-922PT.1-AC)  
STATION 509+41.43 TO 513+00.04  
COOK COUNTY SN. 016-W907  
SCALE: None DRAWN BY: ET/CHD  
DATE: October 29, 2004 CHECKED BY: CG/AJS

10/27/2004 04:45:36 PM