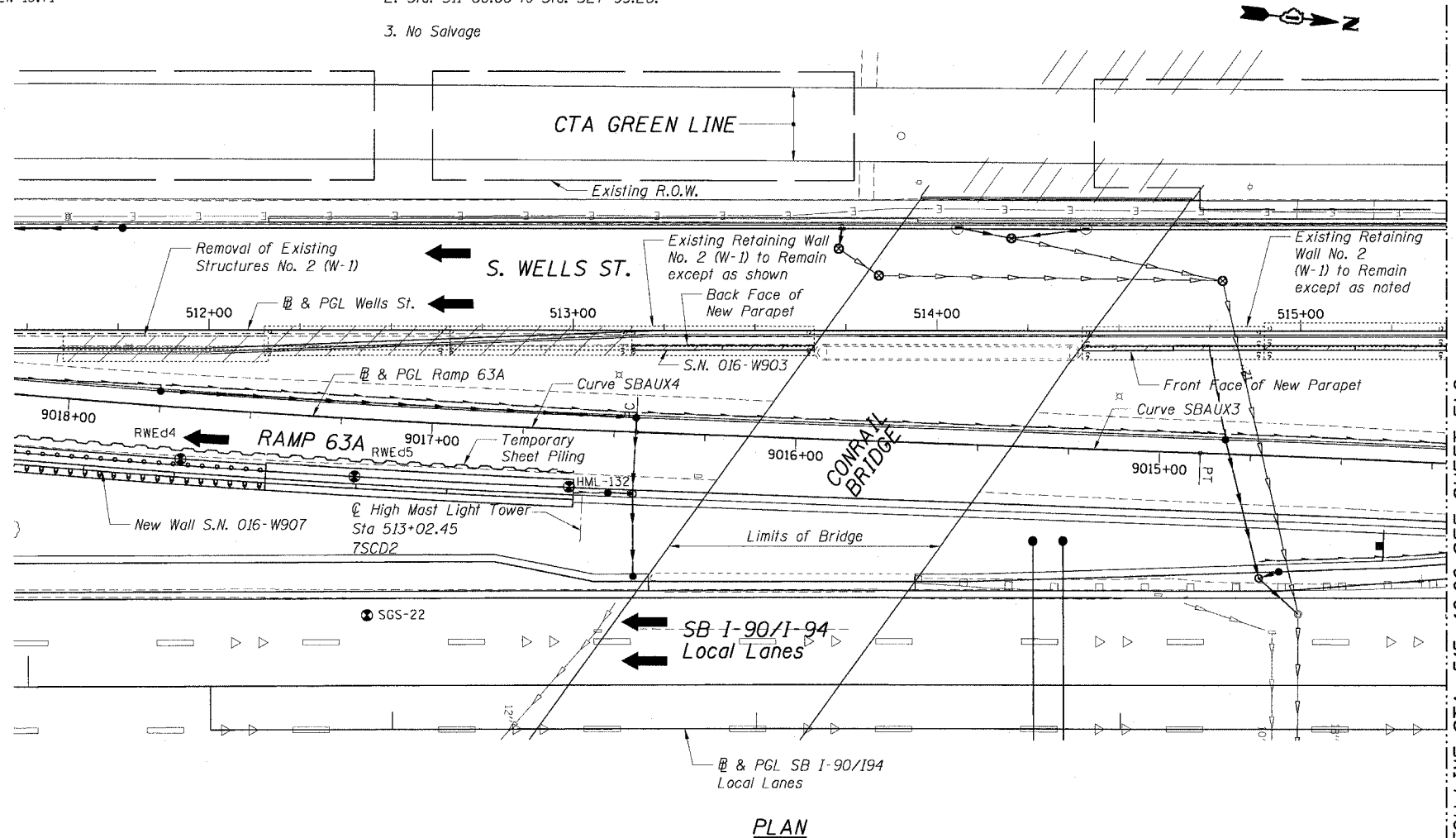


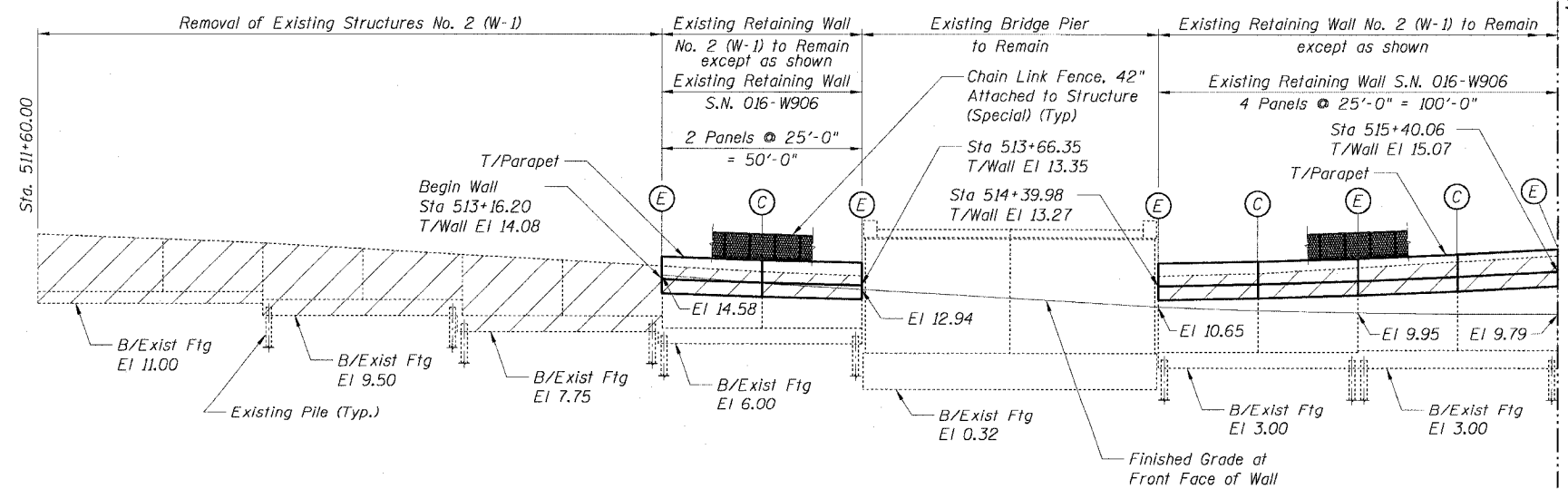
STATE OF ILLINOIS
DEPARTMENT OF TRANSPORTATION

Bench Mark:
No. 3533 Brass disk (CTA Monument) at the Southwest corner of 63rd St. and Harvard Ave. El. 19.71

- Existing Structure:**
1. Cast-in-place cantilever retaining wall W-1 on piles with variable height.
 2. Sta. 511+60.00 to Sta. 527+99.28.
 3. No Salvage



PLAN



FRONT FACE ELEVATION
(Looking West)

INDEX OF SHEETS

- Eb1 General Plan I
- Eb2 General Plan II
- Eb3 General Plan III
- Eb4 General Plan IV
- Eb5 Profile Grades
- Eb6 Typical Sections
- Eb7 Typical Sections
- Eb8 Detailed Plan and Elevation
- Eb9 Detailed Plan and Elevation
- Eb10 Detailed Plan and Elevation
- Eb11 Detailed Plan and Elevation
- Eb12 Detailed Plan and Elevation
- Eb13 Detailed Plan and Elevation
- Eb14 Detailed Plan and Elevation
- Eb15 Wall Sections
- Eb16 Wall Sections and Details
- Eb17 Fluted Parapet Details
- Eb18 Reinforcement Details
- Eb19 Soil Boring Logs
- Eb20 Soil Boring Logs
- Eb21 Soil Boring Logs
- Eb22 Soil Boring Logs
- Eb23 Soil Boring Logs

LEGEND

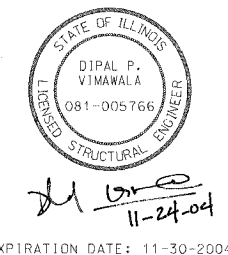
- (C) - Construction Joint
- (E) - Expansion Joint
- ← - Direction of Traffic
- ⊙ - Soil Boring Location
- ▨ - Removal of Existing Structures
- ▩ - Chain Link Fence, 42" Attached to Structure (Special)
- - New Structure
- ⋯ - Existing Structure

NOTES:

1. For High Mast Light Tower Details, see LTF Sheets.
2. For Chain Link Fence, 42" Attached to Structure (Special) Details, see Sheet SD1.
3. For Chain Link Fence, 42" Gate (Special) Details see Sheets SD2-SD5.
4. For Rustication Details, see Sheet SD6.
5. For Utilities Symbols, see Civil Drawings.

ABBREVIATIONS:

- B Bottom
- BF Back Face
- ⊕ Base line
- EF Each Face
- EW Each Way
- FF Front Face
- Flg Footing
- Lt Left
- PGL Profile Grade Line
- Rt Right
- Sta Station
- T Top
- R.O.W. Right of Way



EXPIRATION DATE: 11-30-2004

F.A.I. RTE.	SECTION	COUNTY	TOTAL SHEETS	SHEET NO.
90/94	2021-922PT.1-AC	COOK	460	289
STA.	TO STA.			
FED. ROAD DIST. NO. 1	ILLINOIS	FED. AID PROJECT	62693	

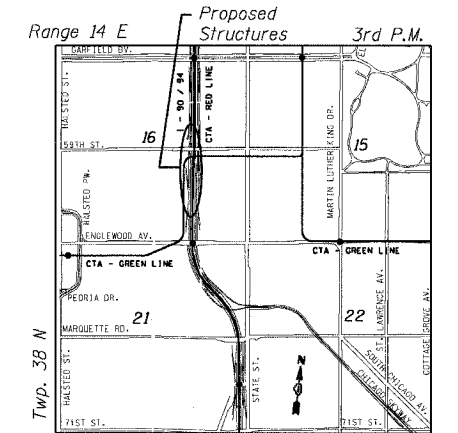
Item	Unit	Quantity
Removal of Existing Structures No. 2	Each	1
Porous Granular Embankment	Cu Yd	3,561
Porous Granular Embankment, Special	Cu Yd	370
Concrete Removal	Cu Yd	80
Structure Excavation	Cu Yd	4,004
Concrete Structures	Cu Yd	1,192
Concrete Superstructure	Cu Yd	245
Protective Coat	Sq Yd	1,960
Rustication Finish	Sq Ft	9,031
Reinforcement Bars, Epoxy Coated	Pound	166,570
Pipe Underdrains for Structures, 6"	Foot	739
Temporary Soil Retention System	Sq Ft	10,280
Temporary Sheet Piling	Sq Ft	3,880
Chain Link Fence, 42" Attached to Structure (Special)	Foot	1,420
Chain Link Fence, 42" Gate (Special)	Each	1

DESIGN SPECIFICATIONS

2002 AASHTO, Standard Specifications for Highway Bridges

DESIGN STRESSES

FIELD UNITS
f'c = 3,500 psi
fy = 60,000 psi (Reinf.)



LOCATION SKETCH

Sheet Eb1 of 23



NAME	DATE

ILLINOIS DEPARTMENT OF TRANSPORTATION
F.A.I. 90/94 (DAN RYAN EXPRESSWAY)
GENERAL PLAN I
SOUTH WELLS STREET RETAINING WALL
WEST 62ND STREET TO WEST 59TH STREET
SECTION 2021-922PT.1-AC
STATION 513+16.20 TO 528+23.69
COOK COUNTY SN. 016-W906-W903
SCALE: None DRAWN BY: ET/CHD
DATE: October 29, 2004 CHECKED BY: CG/MM

11/23/2004 09:36:16 AM