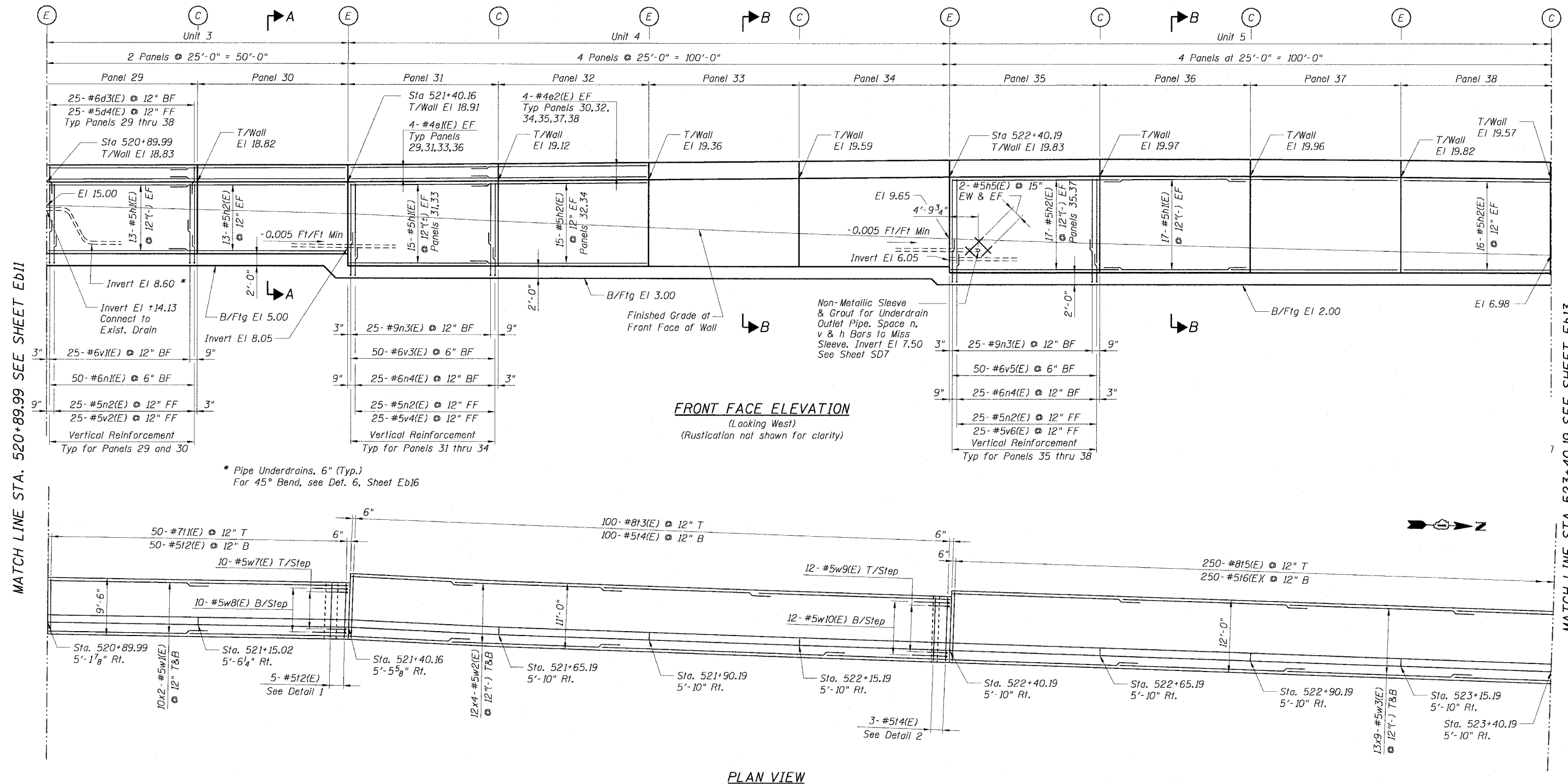


STATE OF ILLINOIS
DEPARTMENT OF TRANSPORTATION

F.A.I. RTE.	SECTION	COUNTY	TOTAL SHEETS	SHEET NO.
90/94	2021-922PT.1-AC	COOK	460	300
STA.	TO STA.			
FED. ROAD DIST. NO. 1	ILLINOIS	FED. AID PROJECT		

62693



FRONT FACE ELEVATION
(Looking West)
(Rustication not shown for clarity)

PLAN VIEW

* Pipe Underdrains, 6" (Typ.)
For 45° Bend, see Det. 6, Sheet Eb16

MATCH LINE STA. 520+89.99 SEE SHEET Eb11

MATCH LINE STA 523+40.19 SEE SHEET Eb13

Sheet Eb12 of 23

REVISIONS	
NAME	DATE

ILLINOIS DEPARTMENT OF TRANSPORTATION
F.A.I. 90/94 (DAN RYAN EXPRESSWAY)
DETAILED PLAN AND ELEVATION
SOUTH WELLS STREET RETAINING WALL
WEST 62ND STREET TO WEST 59TH STREET
SECTION 2021-922PT.1-AC
STATION 513+16.20 TO 528+23.69
COOK COUNTY SN. 016-W906-W903
SCALE: None
DATE: October 29, 2004
DRAWN BY: RJ/CHD
CHECKED BY: AJS/MM



MA: P-40460, Struct-N-F-Ctrl-F90, STN-W903, VRT-09-4052A016-W903, 11/23/2004 09:41:25 AM