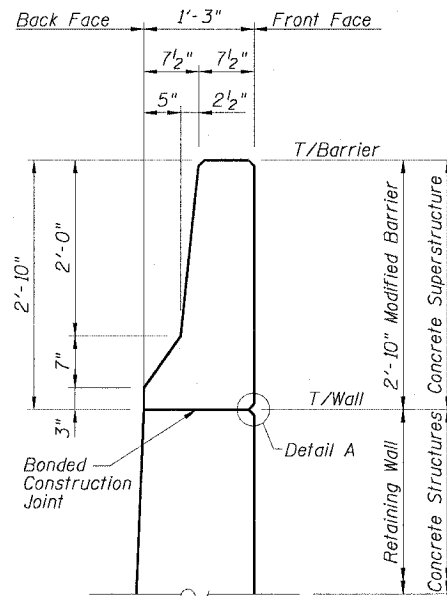


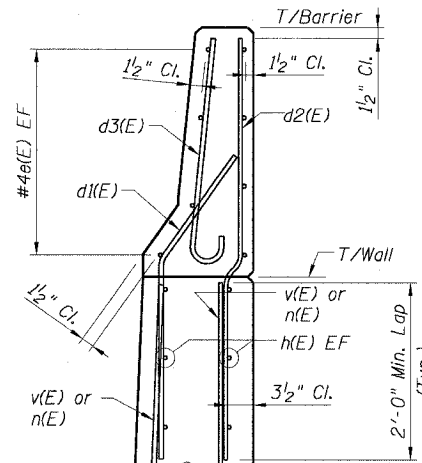
STATE OF ILLINOIS
DEPARTMENT OF TRANSPORTATION

| | | | | |
|-----------------------|-----------------|------------------|--------------|-----------|
| F.A.I. RTE. | SECTION | COUNTY | TOTAL SHEETS | SHEET NO. |
| 90/94 | 2021-922PT.1-AC | COOK | 460 | 326 |
| STA. | TO STA. | | | |
| FED. ROAD DIST. NO. 1 | ILLINOIS | FED. AID PROJECT | | |

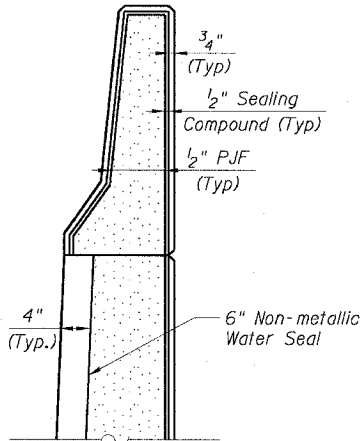
62693



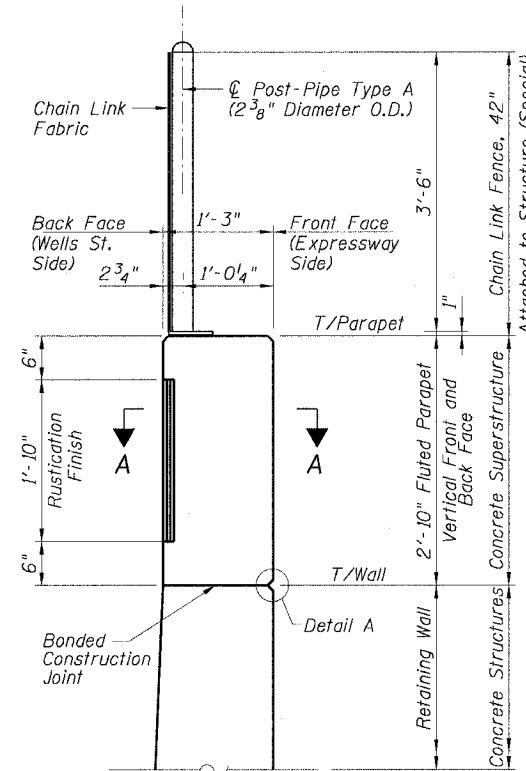
DIMENSIONS



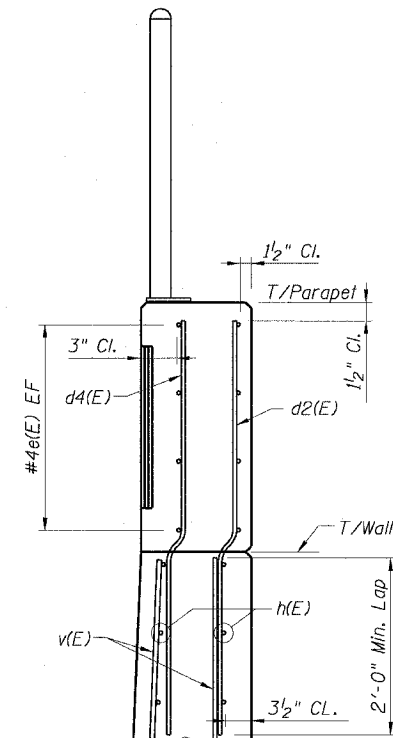
REINFORCING



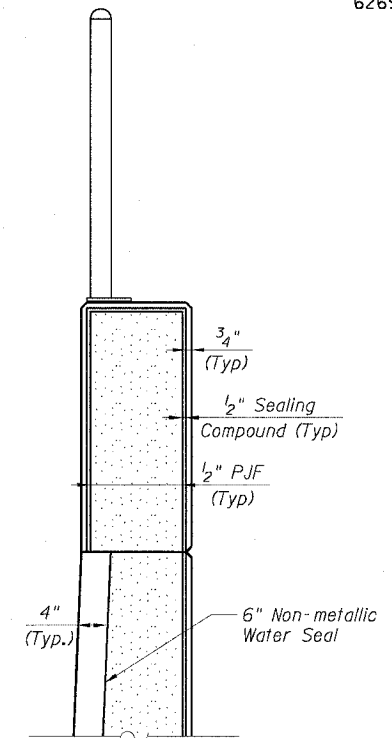
EXPANSION JOINT



DIMENSIONS



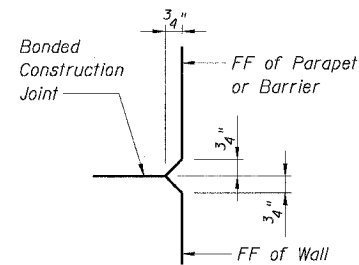
REINFORCING



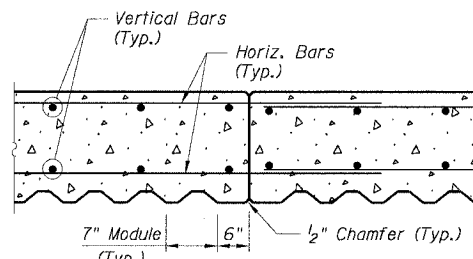
EXPANSION JOINT

TYPICAL SECTIONS - MODIFIED BARRIER

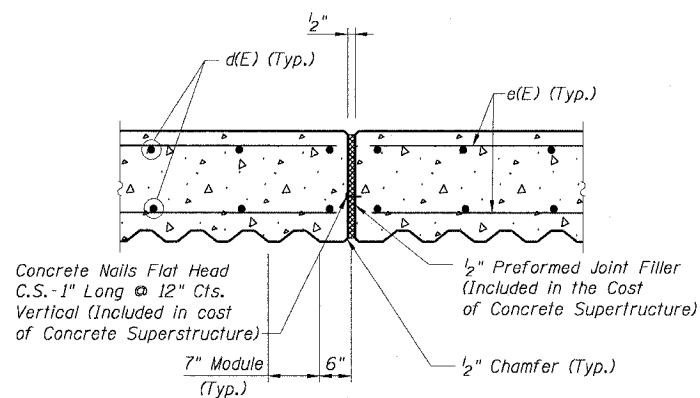
TYPICAL SECTIONS - FLUTED PARAPET



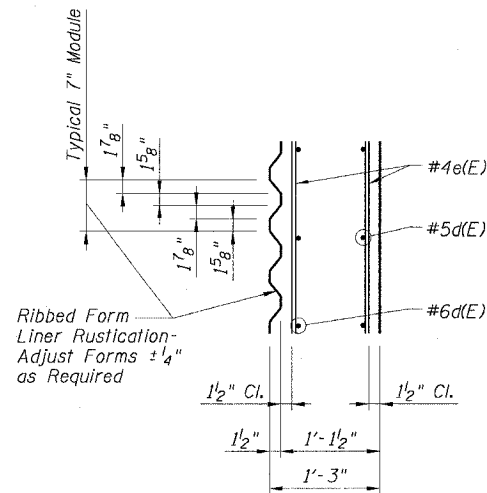
DETAIL A



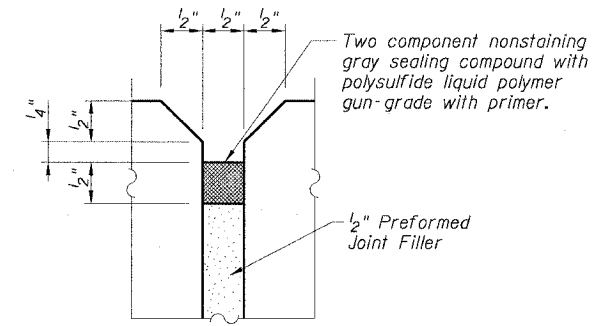
CONSTRUCTION JOINT DETAIL



EXPANSION JOINT DETAIL



SECTION A-A



EXPANSION JOINT SEALING DETAIL

NOTES:

- For Bar Bending Diagrams see Sheet Ec16
- For Chain Link Fence, 42" Attached to Structure (Special) Detail see Sheet SD1.

| REVISIONS | |
|-----------|------|
| NAME | DATE |
| | |
| | |
| | |
| | |
| | |
| | |
| | |
| | |
| | |

Sheet Ec15 of 20
ILLINOIS DEPARTMENT OF TRANSPORTATION
F.A.I. 90/94 (DAN RYAN EXPRESSWAY)
FLUTED PARAPET & MODIFIED BARRIER DETAILS
SOUTH WELLS ST. RETAINING WALL
WEST 61ST STREET TO WEST 59TH STREET
SECTION 2021-922PT.1-AC
STATION 523+36.03 TO STATION 533+88.42
COOK COUNTY S.N. 016-W964, 016-W894
SCALE: None DRAWN BY: GC
DATE: October 29, 2004 CHECKED BY: CG/AJS

11/23/2004 11:16:45 AM I:\16\45\A\16-45\STRUCT\VA-CRR\90\94\2021-922\016-W964-317