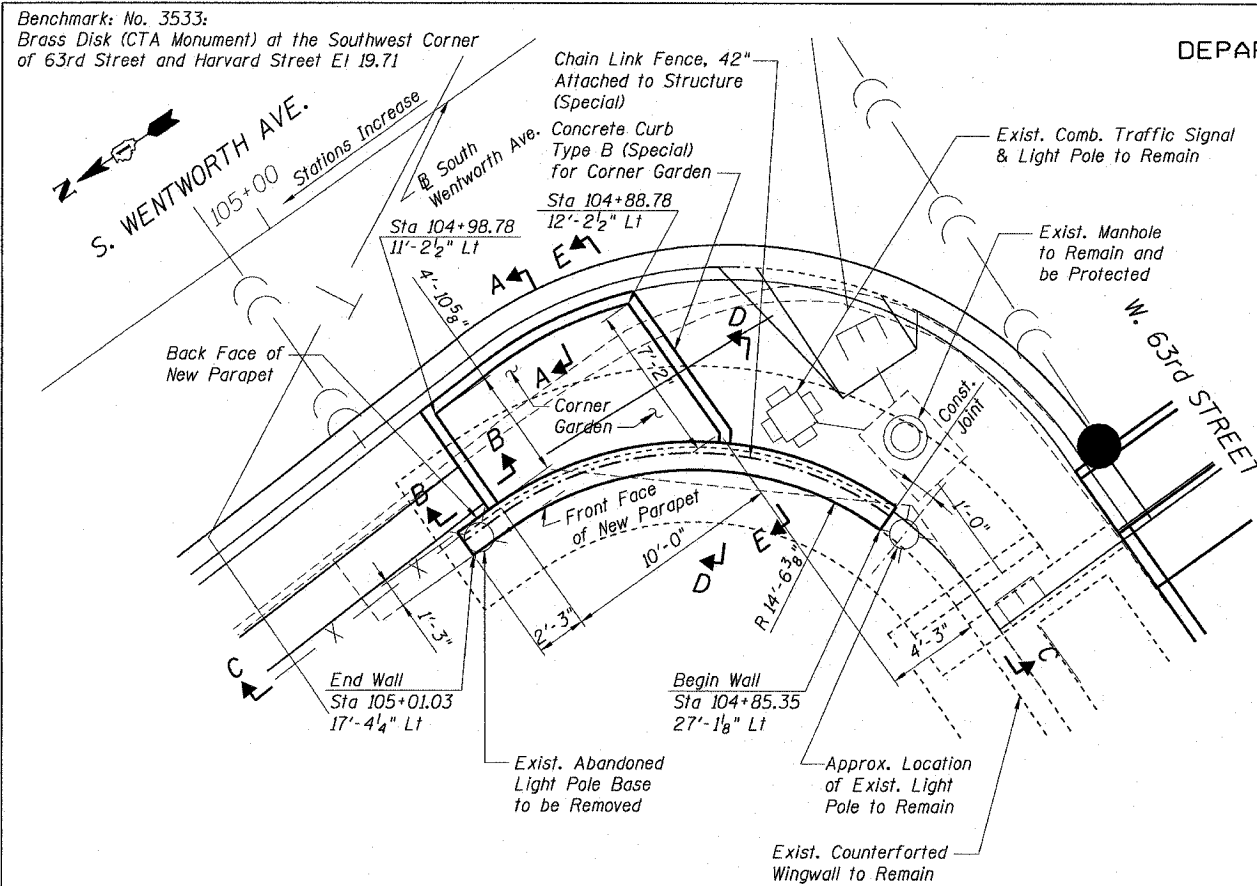
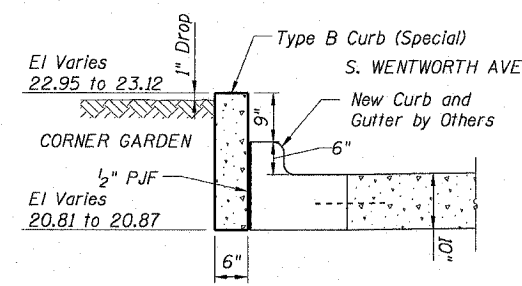


STATE OF ILLINOIS  
DEPARTMENT OF TRANSPORTATION

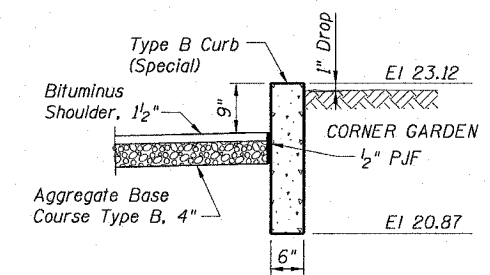
F.A.I. RTE.	SECTION	COUNTY	TOTAL SHEETS	SHEET NO.
90/94	2021-922PT.1-AC	COOK	460	336
STA.	TO STA.			
FED. ROAD DIST. NO. 1	ILLINOIS	FED. AID PROJECT	62693	



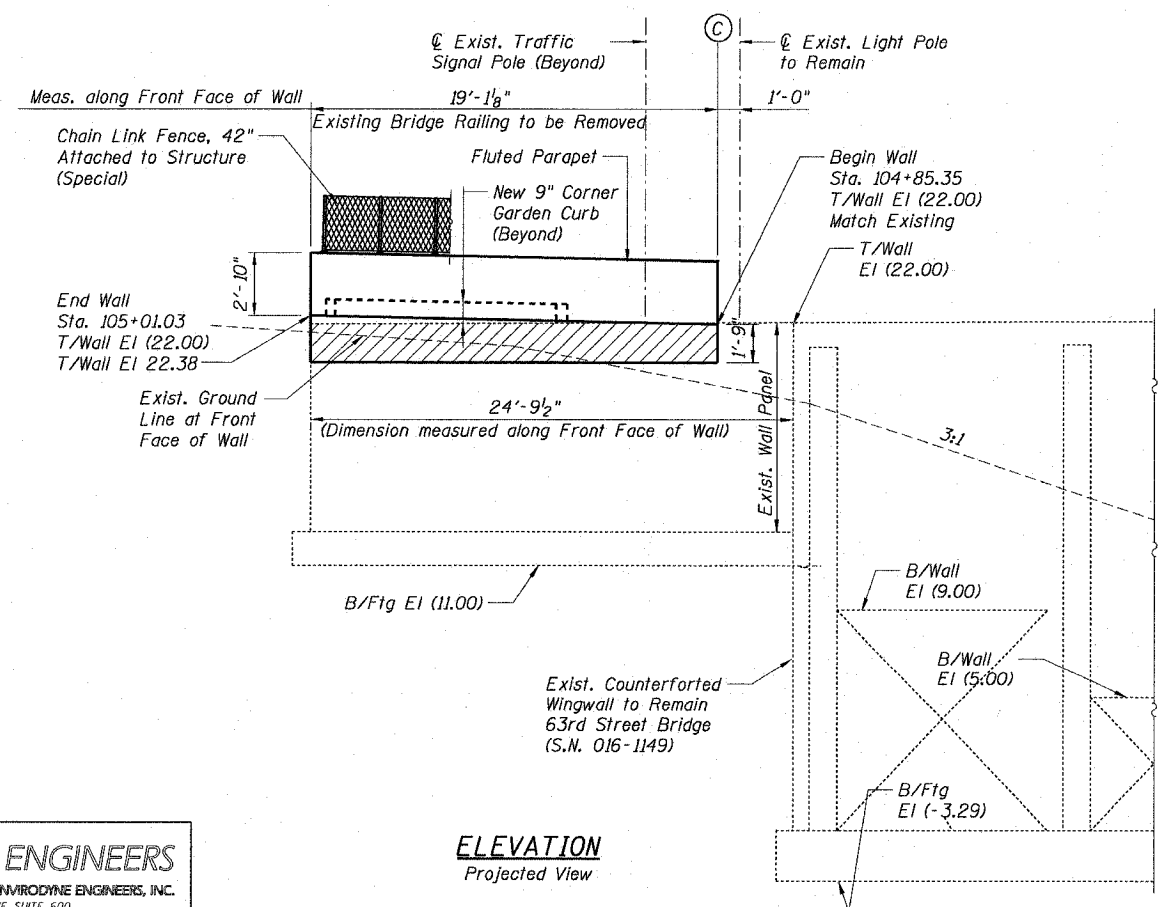
PLAN



SECTION A-A



SECTION B-B



ELEVATION  
Projected View

GENERAL NOTES:

- Station and offsets are measured from @ & PGL S. Wentworth Ave. to the front face of the new Fluted Parapet.
- Existing utilities in conflict with Corner Garden shall be abandoned or relocated according to directions given in the Roadway Plans.
- All exposed concrete edges shall have a 3/4" by 45° chamfer except where shown otherwise. Chamfer on vertical edges shall be continued a minimum of 1 foot below the finished ground line.
- A protective coat shall be applied according to Section 503.19 of the Standard Specifications to all concrete surfaces not in contact with soil.
- All construction joints shall be bonded.
- Reinforcement bars shall conform to the requirements of AASHTO M31 or M322, Grade 60.
- Reinforcement bars designated "(E)" shall be epoxy coated.
- Existing reinforcing steel which is exposed by the concrete removal process, but which is to remain partially embedded in the existing structure shall be cleaned to be free of existing concrete & rust. Strengthened if necessary and recast into the new concrete. (Cost Included with Concrete Removal).
- The back face of Retaining Wall be waterproofed according to Article 503.18 of Standard Specifications.
- The Outlines of Existing Footings have been prepared based on available existing Plans and other information. Actual field conditions may vary due to construction. Plan Dimensions and Details relating to Existing Structures have been taken from Existing Plans and are subject to nominal construction variations. It shall be the Contractor's responsibility to verify such Dimensions and Details in the field and make necessary approved adjustments prior to construction or ordering of Materials. Such variations shall not be cause for additional compensation or a change in the Scope of Work. However, the Contractor will be paid for the Quantity actually furnished at the Unit Price for the Work.
- Cost of Removal of Existing Bridge Railing and Existing Abandoned Light Pole Base to be included in cost of Concrete Removal.

DESIGN SPECIFICATIONS

2002 AASHTO, Standard Specifications  
For Highway Bridges

DESIGN STRESSES

FIELD UNITS  
f'c = 3,500 psi  
fy = 60,000 psi (Reinf.)

LEGEND:

- Concrete Removal
- Chain Link Fence, Special
- Construction Joint
- New Structure
- Exist. Structure or by Others
- (11.00) - Exist. Plan Historical Elev.

ABBREVIATIONS:

- B Bottom
- BF Back Face
- EF Each Face
- EI Elevation
- FF Front Face
- Ftg Footing
- Lt Left
- PJF Preformed Joint Filler
- Rt Right
- Sta Station
- T Top

INDEX OF SHEETS

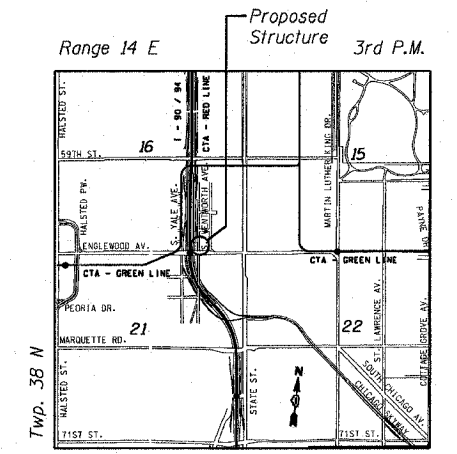
- CGb1 General Plan
- CGb2 Sections and Details
- CGb3 Sections, Details & Bill of Material



Matthew J. Pregon - 10-29-04  
EXPIRATION DATE: 11-30-2004

NOTES:

- For Bill of Material see Sheet CGb3.
- See Civil Drawing for Utility Symbols.
- For details of Concrete Curb Type B (Special) see Roadway details.
- For Elevation C-C, Sections D-D and E-E see Sheet CGb2.
- For Detail 1 see Sheet CGb2.
- For Fluted Parapet Details see Sheet CGb3.
- For Chain Link Fence, Special details, see Sheet SD1
- Work Sheets CGb1 thru CGb3 together.



LOCATION SKETCH

CGb1 OF 3

REVISIONS	
NAME	DATE

ILLINOIS DEPARTMENT OF TRANSPORTATION  
F.A.I. 90/94 (DAN RYAN EXPRESSWAY)  
GENERAL PLAN  
NORTHEAST CORNER GARDEN  
SOUTH WENTWORTH AVE. AT WEST 63rd STREET  
SECTION 2021-922 PT.1-AC  
STATION 104+85.35 TO 105+01.03  
COOK COUNTY

SCALE: None  
DATE: October 29, 2004

DRAWN BY: CHD/RJ  
CHECKED BY: DC

