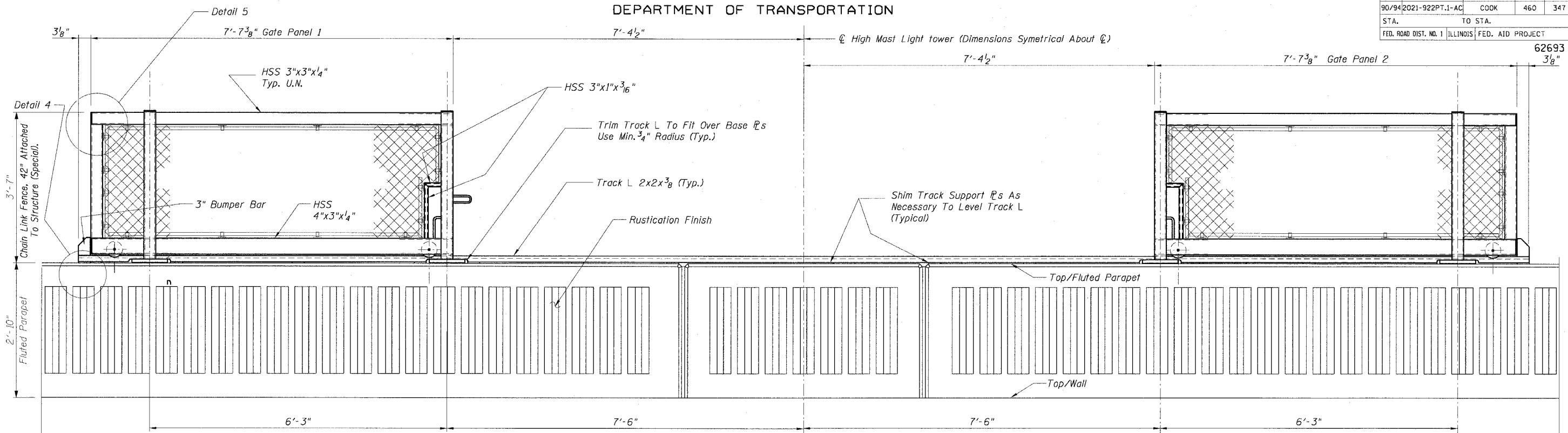


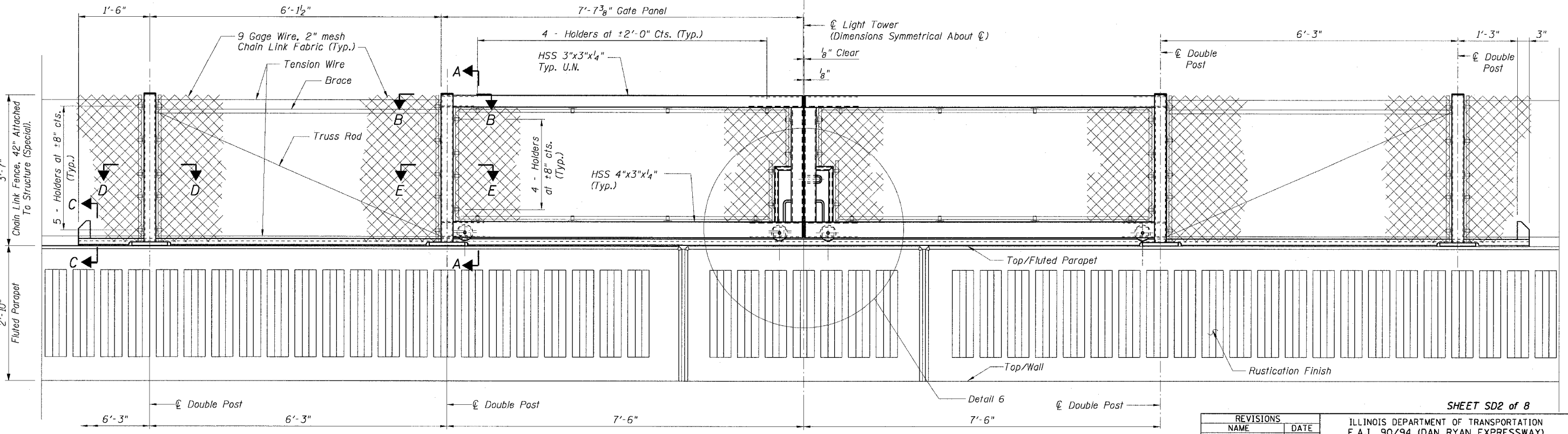
STATE OF ILLINOIS
DEPARTMENT OF TRANSPORTATION

F.A.I. RTE.	SECTION	COUNTY	TOTAL SHEETS	SHEET NO.
90/94	2021-922PT.1-AC	COOK	460	347
STA.	TO STA.			
FED. ROAD DIST. NO. 1	ILLINOIS	FED. AID PROJECT		

62693
3/8"



DETAIL BACK FACE ELEVATION - GATE IN OPEN POSITION



DETAIL BACK FACE ELEVATION - GATE IN CLOSED POSITION

- NOTES:**
1. For Notes see Sheet SD3.
 2. For Sections A-A, B-B, D-D and E-E see Sheet SD4.
 3. For Sections C-C and Details 4, 5, 6 and 7 see Sheet SD5.

REVISIONS	
NAME	DATE

SHEET SD2 of 8
ILLINOIS DEPARTMENT OF TRANSPORTATION
F.A.I. 90/94 (DAN RYAN EXPRESSWAY)
TYPICAL ELEVATIONS
CHAIN LINK FENCE, 42" GATE (SPECIAL)
WEST 69TH STREET TO WEST 47TH STREET
COOK COUNTY

SCALE: None
DATE: October 29, 2004
DRAWN BY: FJD
CHECKED BY: RS



11/23/2004 08:31:33 AM I:\P-40466\Struct\4-rwpl\SN\Standard_Details\SD2-Gate_Elev.dwg