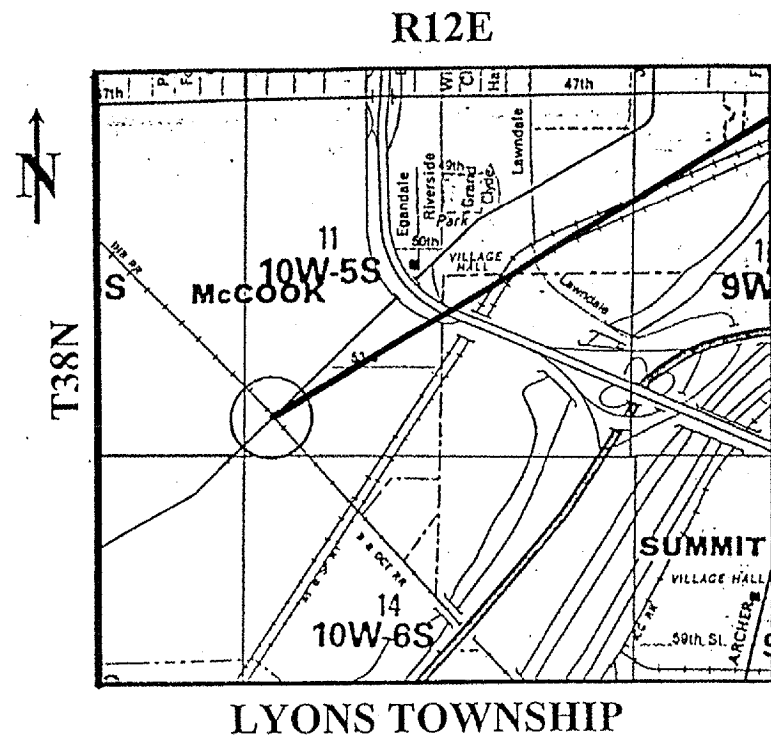
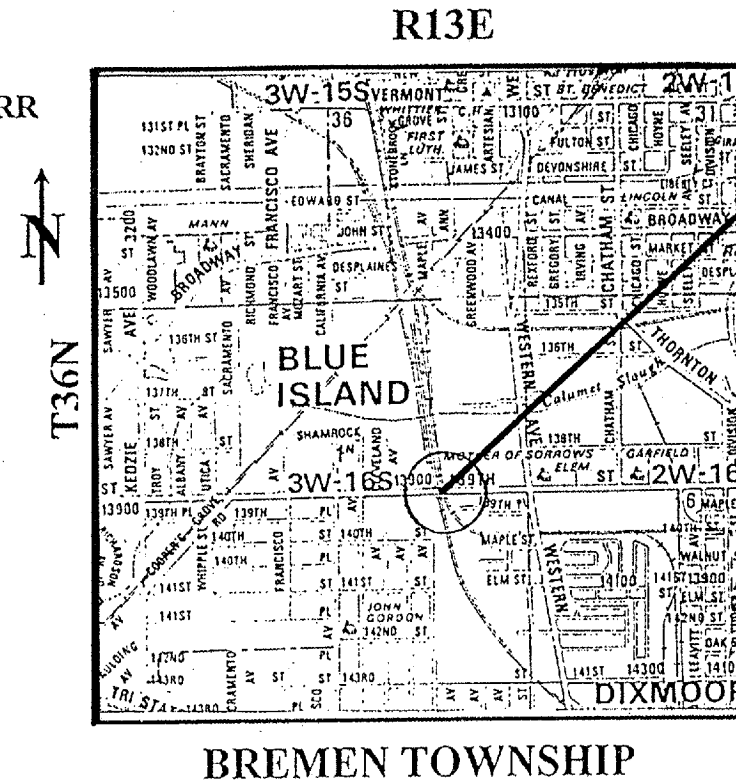


ROUTE	SECTION	COUNTY	TOTAL SHEETS	SHEET NUMBER
VARIOUS	2004-054BP	COOK	14	4

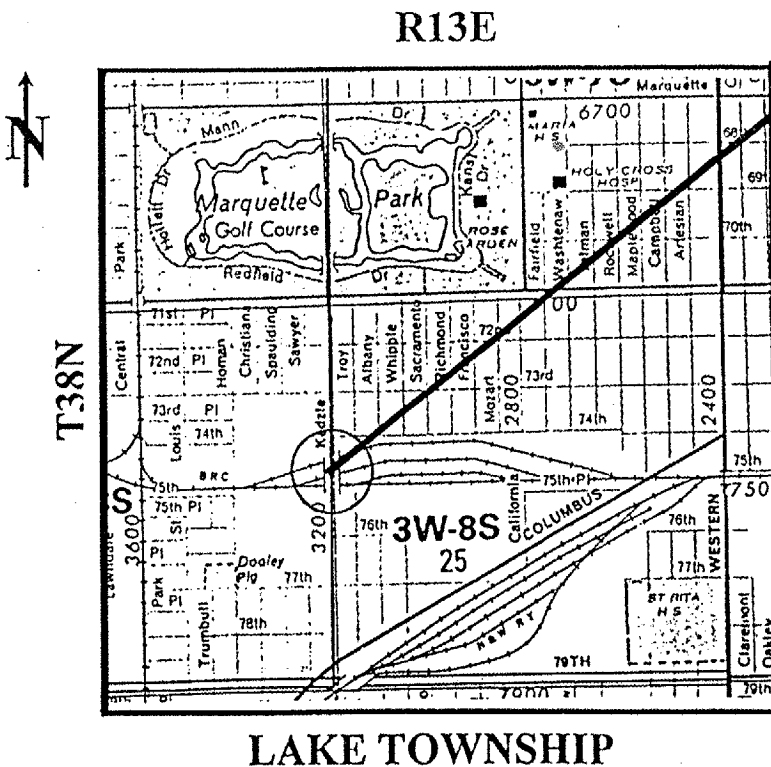
CONTRACT 62791



1.) SN: 016-0394, JOLIET RD. OVER RR
2001 ADT = 19,900
SPEED LIMIT = 45 MPH



3.) SN: 016-0994, 139th ST. OVER RAILROAD
2001 ADT = 5,200
SPEED LIMIT = 35 MPH ?



2.) SN: 016-0761, KEDZIE AVE. OVER RR
2001 ADT = 24,800
SPEED LIMIT = 30 MPH

ILLINOIS DEPARTMENT OF TRANSPORTATION

LOCATION MAPS