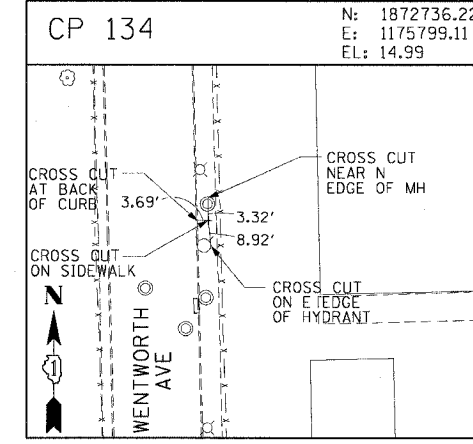
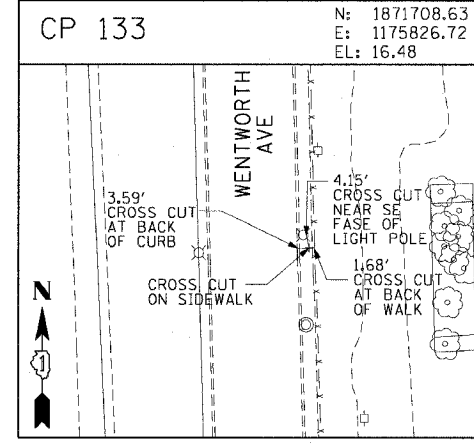
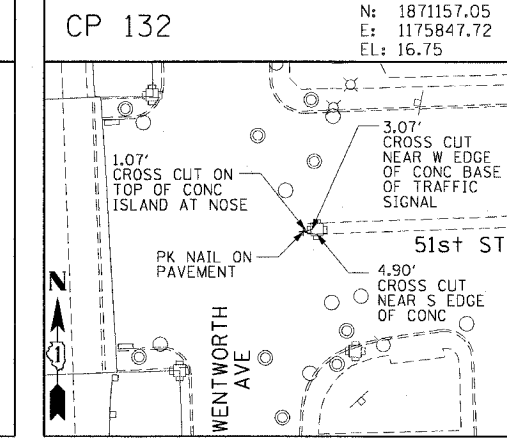
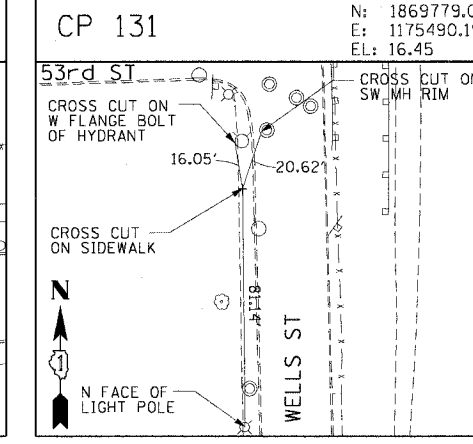
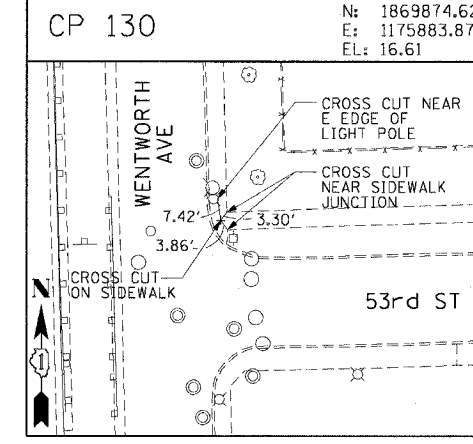
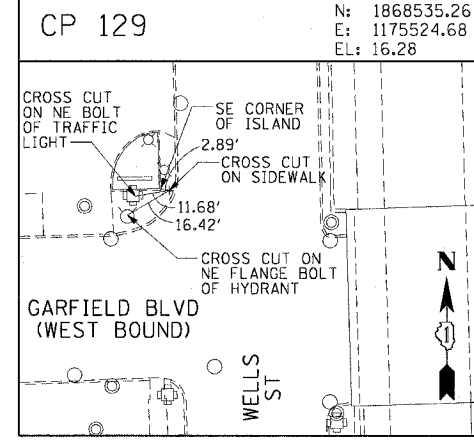
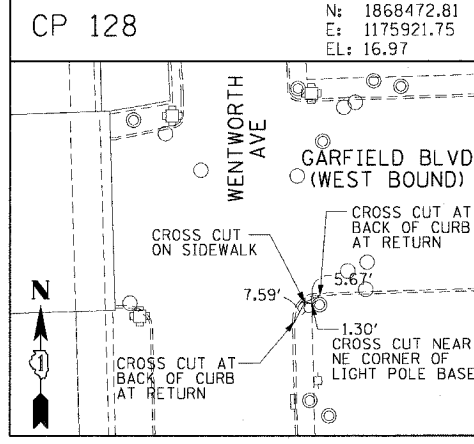
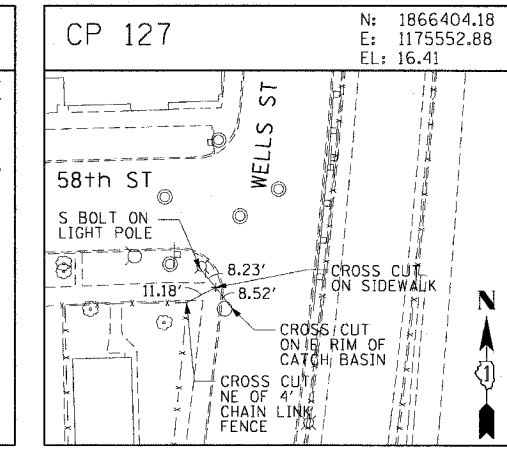
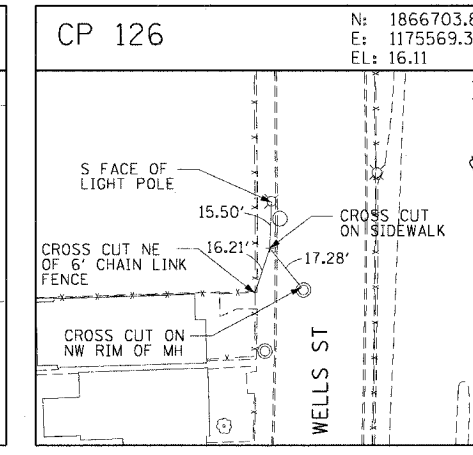
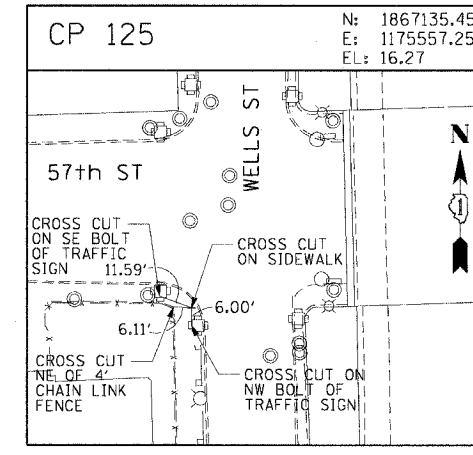
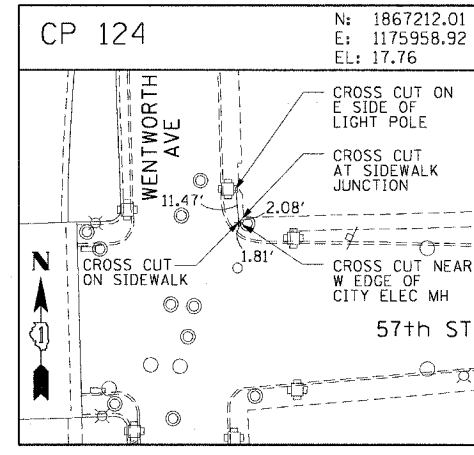
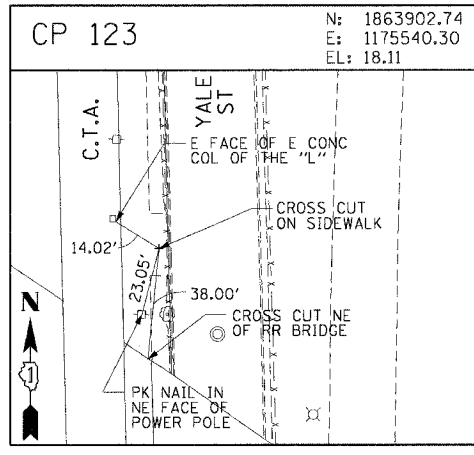
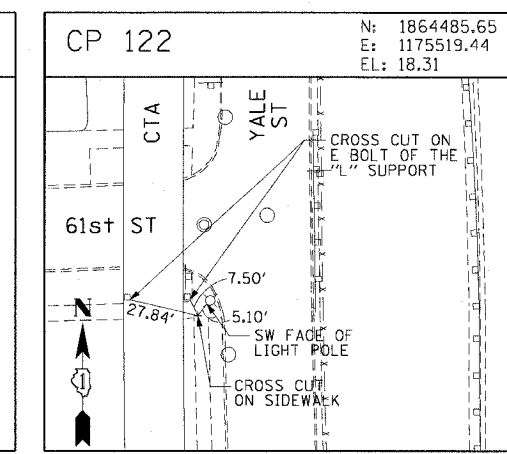
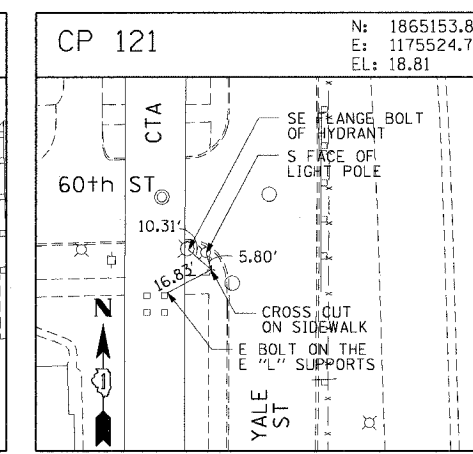
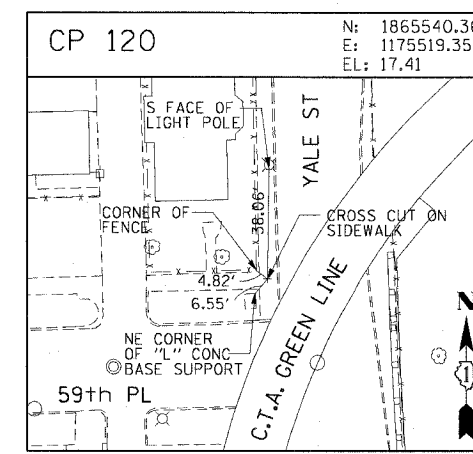
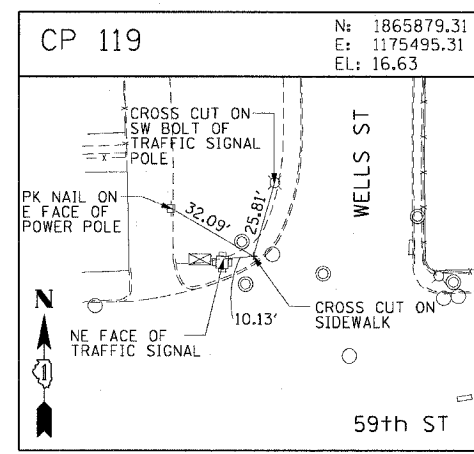
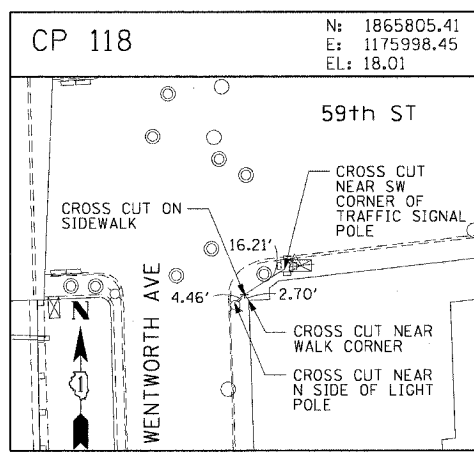


F.A.I. RTE.	SECTION	COUNTY	TOTAL SHEETS	SHEET NO.
90/94	2004-095 SC	COOK	30	14
STA.	TO STA.			
FED. ROAD DIST. NO. 1 ILLINOIS FED. AID PROJECT				
62836				



REVISIONS	
NAME	DATE

ILLINOIS DEPARTMENT OF TRANSPORTATION  
F.A.I. 90/94 (DAN RYAN EXPRESSWAY)  
63rd ST TO 59th ST (FRONTAGE ROAD SIGNING)

**SURVEY TIES AND CONTROL POINTS**

SCALE: 1"=30'  
DATE: NOVEMBER 5, 2004

DRAWN BY: MRK  
CHECKED BY: JAL

11/02/2004 03:45:50 PM