

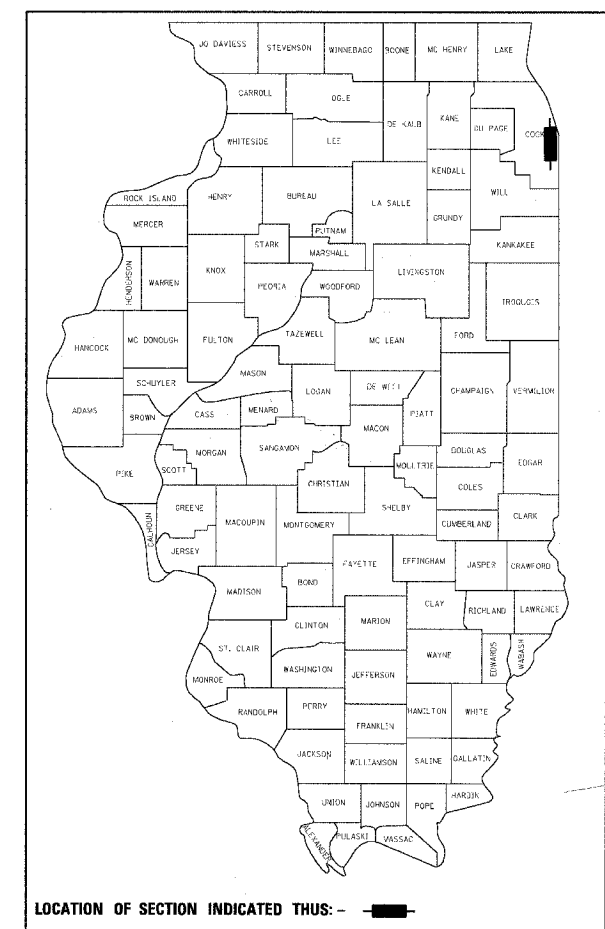
F.A.I. RTE.	SECTION	COUNTY	TOTAL SHEETS	SHEET NO.
90/94	2004-098TS	COOK	63	1

STATE OF ILLINOIS
DEPARTMENT OF TRANSPORTATION
DIVISION OF HIGHWAYS

**PLANS FOR PROPOSED
FEDERAL AID HIGHWAY**

F.A.I. ROUTE 90/94 (DAN RYAN EXPRESSWAY)
SECTION 2004-098TS
PROJECT: *IM-094-3(368)057*
TRAFFIC SIGNALS AT 59TH STREET AND
WENTWORTH AVENUE /WELLS STREET
COOK COUNTY
C-91-363-04

D-91-419-01



INDEX OF SHEETS

SHEET	DESCRIPTION
1	COVER SHEET
2	GENERAL NOTES AND PROJECT COMMITMENTS
3-4	SUGGESTED CONSTRUCTION SCHEDULE
5	SUMMARY OF QUANTITIES
6-16	ALIGNMENT PLANS, SURVEY TIES AND CONTROL POINTS
17	TRAFFIC CONTROL SIGNALS BILL OF MATERIALS, INDEX OF STANDARD DRAWINGS AND TRAFFIC SIGNAL NOTES
18-19	TEMPORARY TRAFFIC SIGNAL INSTALLATION
20-21	SUGGESTED STAGES OF CONSTRUCTION AND TRAFFIC CONTROL (FOR REFERENCE ONLY)
22-24	TRAFFIC CONTROL SIGNAL PLANS
25	CDOT ELECTRICAL GENERAL NOTES
26	CDOT ELECTRICAL SYMBOLS AND ABBREVIATIONS
27	59TH STREET BRIDGE EXISTING CONDITIONS, DEMOLITION, AND TEMPORARY LIGHTING PLAN
28	59TH STREET BRIDGE ROADWAY LIGHTING IMPROVEMENTS
29	MISCELLANEOUS ELECTRICAL DETAILS
30	TEMPORARY LIGHTING DETAILS
31-62	BOE STANDARD DETAILS
63	TEMPORARY INFORMATION SIGNING

IDOT HIGHWAY STANDARDS

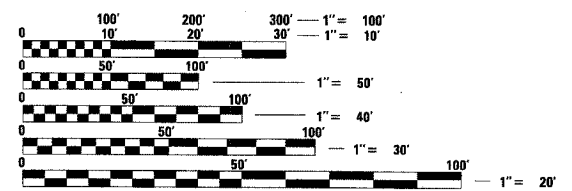
STANDARD	DESCRIPTION
000001-04	STANDARD SYMBOLS, ABBREVIATIONS, AND PATTERNS
001006	DECIMAL OF AN INCH AND OF A FOOT
701701-04	URBAN LANE CLOSURE MULTILANE INTERSECTION
701801-03	LANE CLOSURE MULTILANE 1W OR 2W CROSSWALK OR SIDEWALK CLOSURE
702001-05	TRAFFIC CONTROL DEVICES

PROJECT LOCATED IN CITY OF CHICAGO

DESIGN DESIGNATION

WENTWORTH AVE: 6259 (20) URBAN COLLECTOR
WELLS ST: 8275 (20) URBAN COLLECTOR

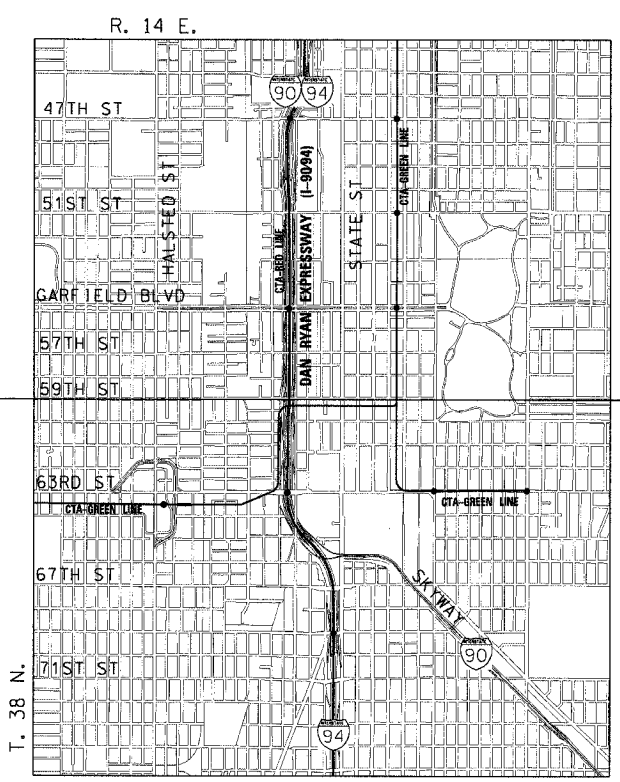
FRONTAGE ROADS:	ADT (2020)	DESIGN SPEED	POSTED SPEED
WENTWORTH AVE	11,000	30	25
WELLS ST	15,000	30	25



FULL SIZE PLANS HAVE BEEN PREPARED USING STANDARD ENGINEERING SCALES. REDUCED SIZED PLANS WILL NOT CONFORM TO STANDARD SCALES. IN MAKING MEASUREMENTS ON REDUCED PLANS, THE ABOVE SCALES MAY BE USED.

DIGGER:
CHICAGO UTILITY ALERT NETWORK
(312) 744-7000

CONTRACT NO. 62839



LOCATION MAP



ROBERT M. GOVEIA
062-055334
REGISTERED PROFESSIONAL ENGINEER OF ILLINOIS
1-24
SHEET NOS.

11/30/05
EXPIRES
11/21/07
DATE

JAMES P. COLEMAN
062-033912
REGISTERED PROFESSIONAL ENGINEER OF ILLINOIS
2-5-30
SHEET NOS.

11-30-05
EXPIRES
11-12-04
DATE

STATE OF ILLINOIS
DEPARTMENT OF TRANSPORTATION
DIVISION OF HIGHWAYS

SUBMITTED *November 15, 20 04*
Dina O'Keefe/PP
DISTRICT ENGINEER

December 10, 20 04
Mike Hine/RO
ENGINEER OF DESIGN AND ENVIRONMENT

December 10, 20 04
Victor Mader/RO
DIRECTOR, DIVISION OF HIGHWAYS

**PRINTED BY THE AUTHORITY
OF THE STATE OF ILLINOIS**

CTE ENGINEERS
CONSOER TOWNSEND ENVIRODYNE ENGINEERS, INC.
303 EAST WACKER DRIVE, SUITE 600
CHICAGO ILLINOIS 60601-5212, PHONE: (312) 938-0300

DISTRICT ONE DESIGN/CONSULTANT SERVICES PROJECT MANAGER
R. SHAH (847) 705-4437