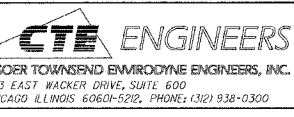
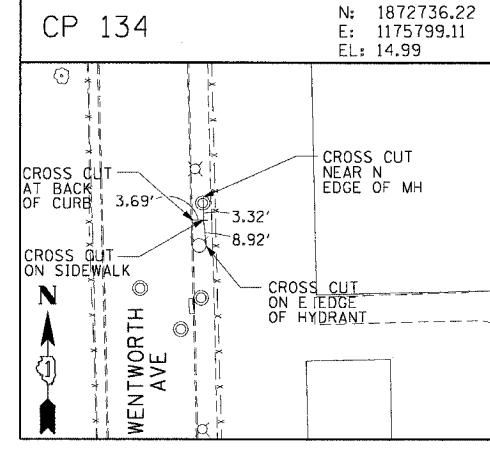
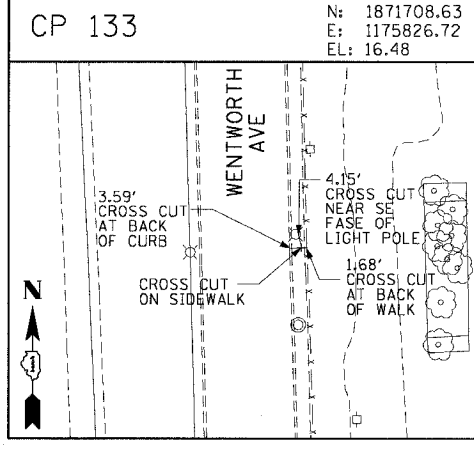
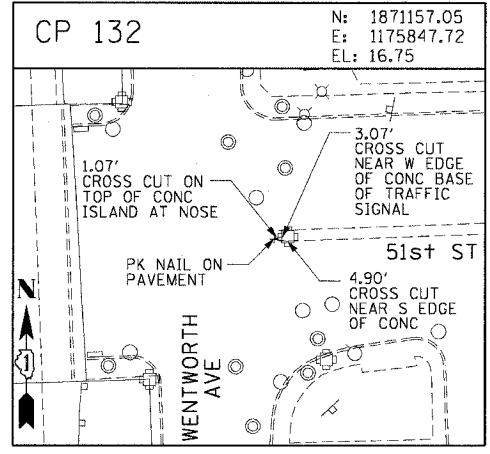
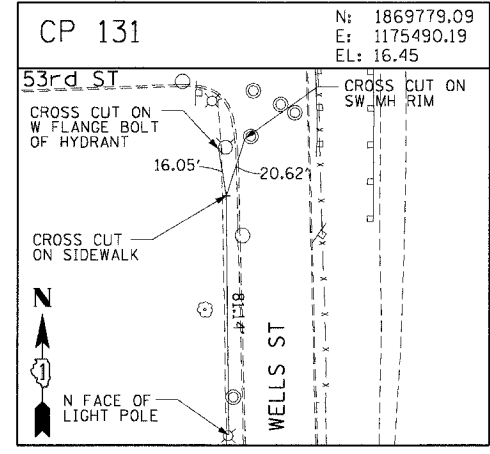
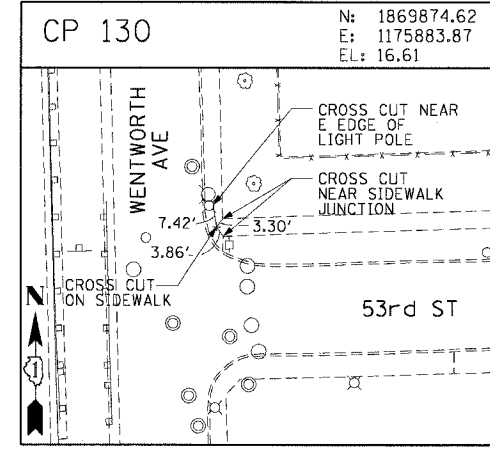
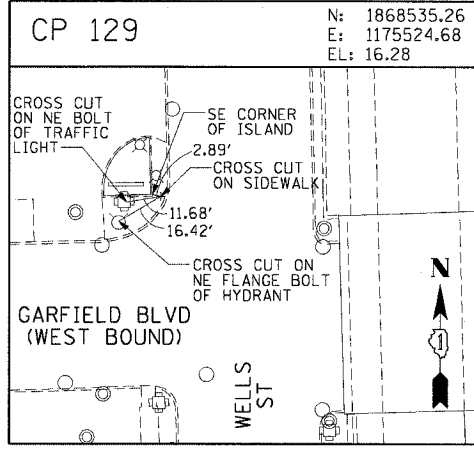
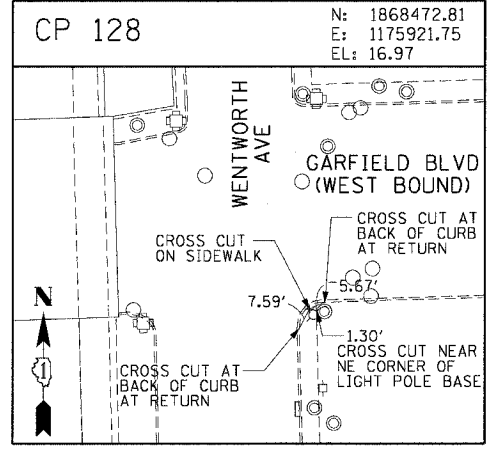
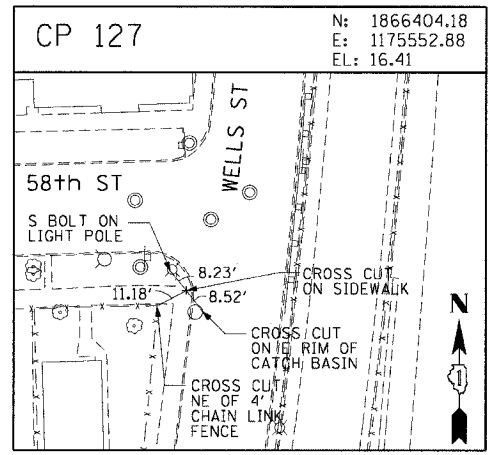
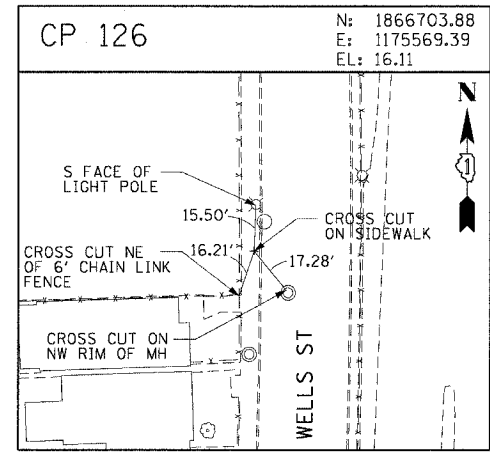
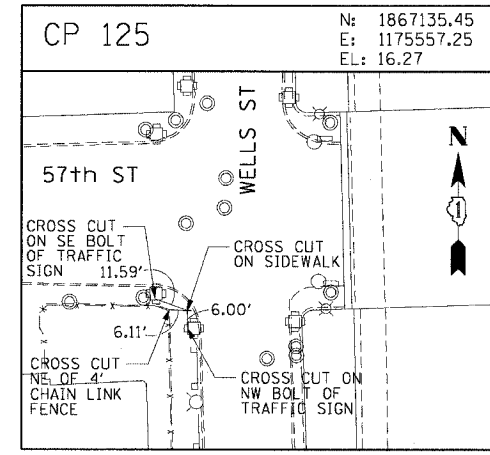
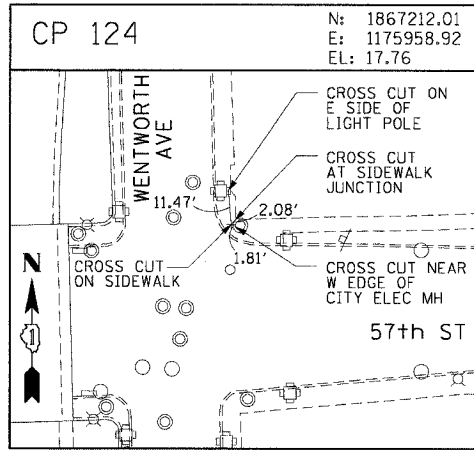
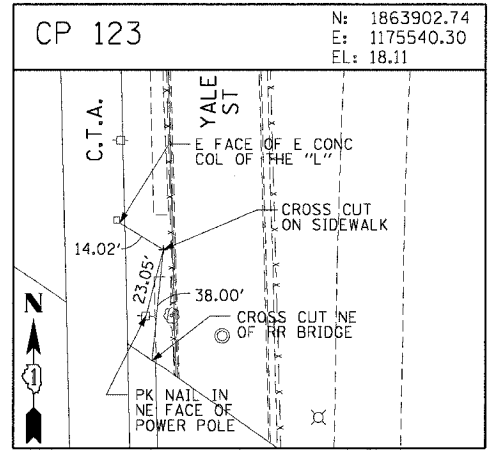
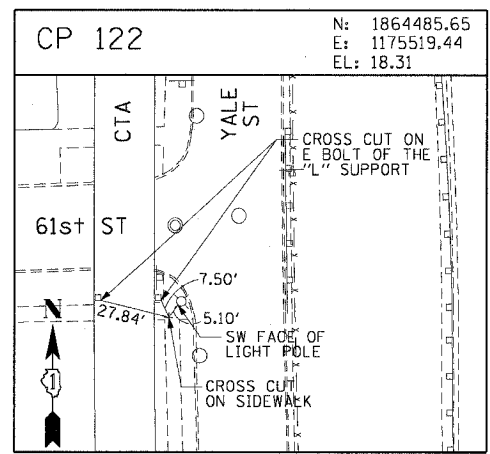
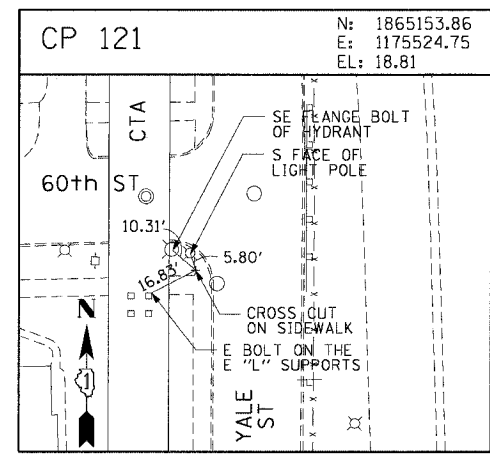
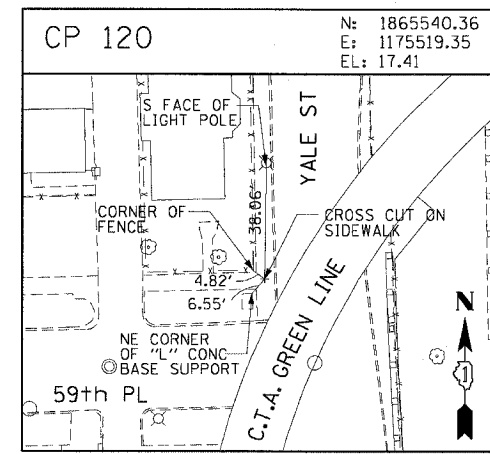
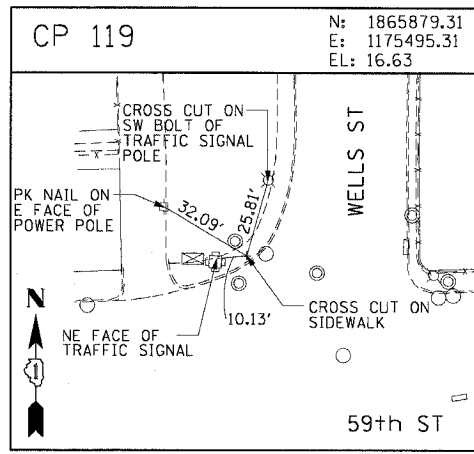
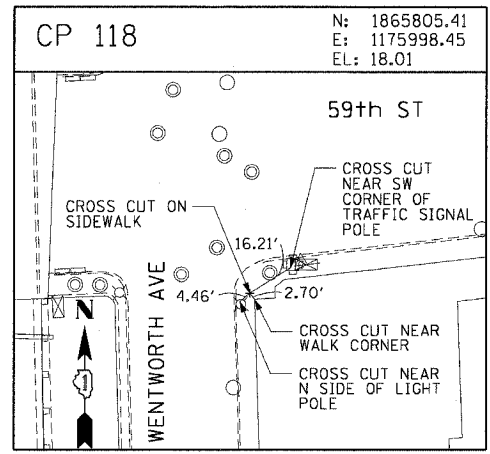


F.A.I. RTE.	SECTION	COUNTY	TOTAL SHEETS	SHEET NO.
90/94	2004-098TS	COOK	63	14
STA.	TO STA.			
FED. ROAD DIST. NO. 1 ILLINOIS FED. AID PROJECT				
62839				



REVISIONS	
NAME	DATE

ILLINOIS DEPARTMENT OF TRANSPORTATION
F.A.I. 90/94 (DAN RYAN EXPRESSWAY)
TRAFFIC SIGNALS AT 59TH STREET AND
WENTWORTH AVENUE / WELLS STREET
SURVEY TIES AND CONTROL POINTS

SCALE: 1"=30'
DATE: November 12, 2004

DRAWN BY: MRK
CHECKED BY: JAL

11/17/2004 02:43 PM MAY-04-065-CTA-MINAC-CHP-90-94-CP-118-135-59TH-PL-022A-DWG