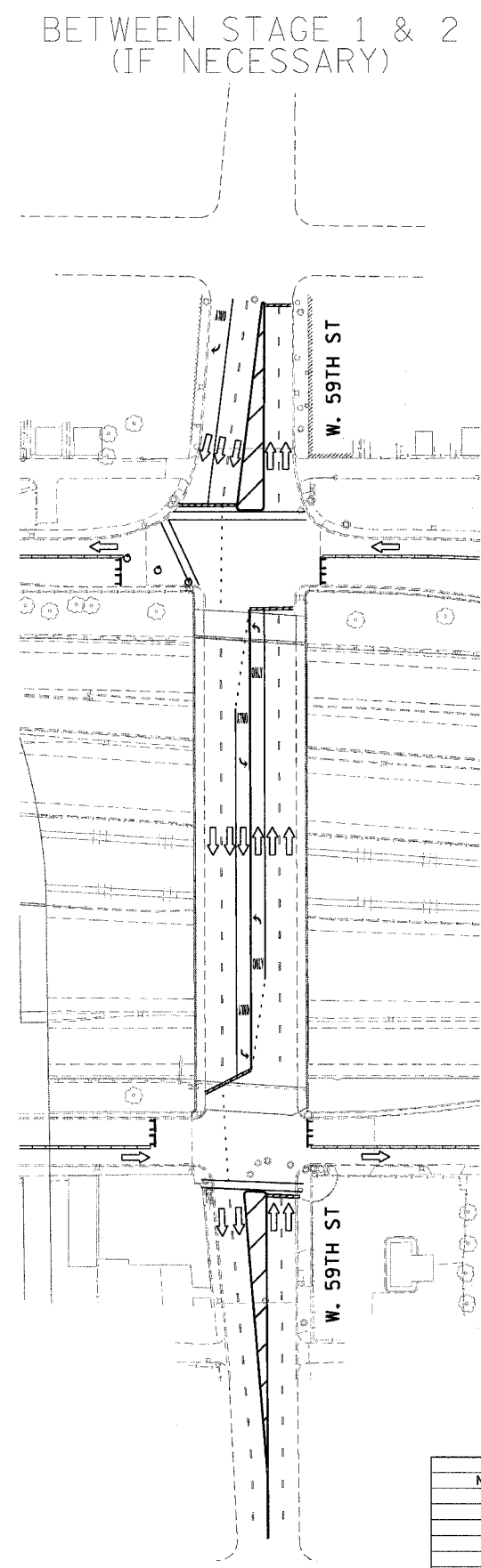
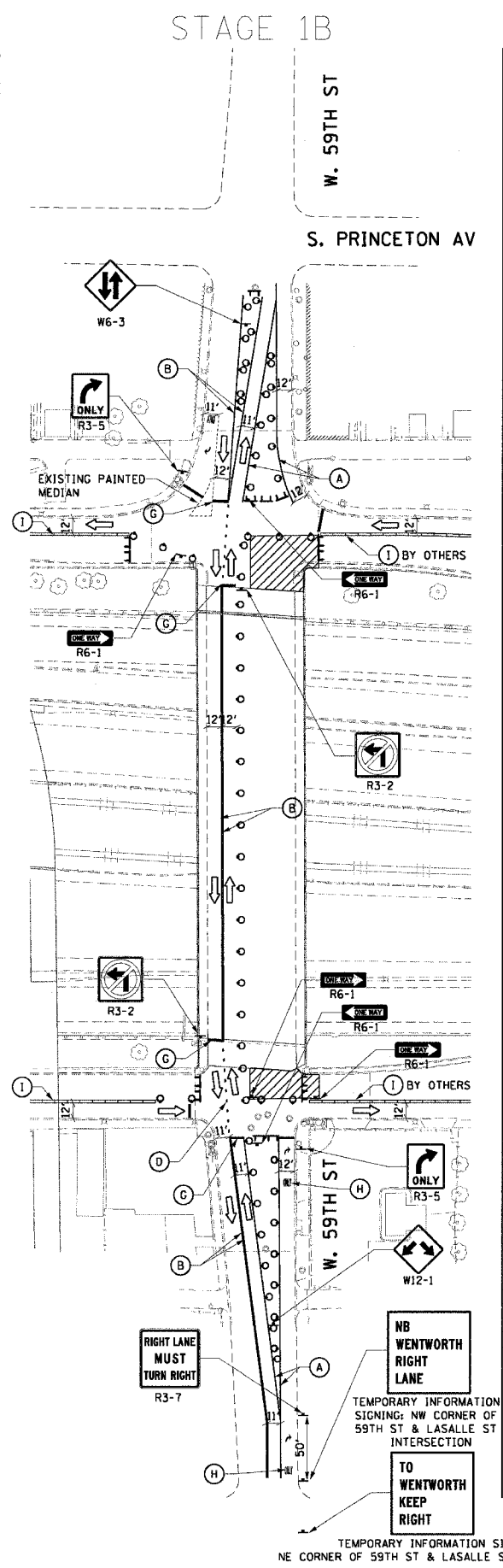
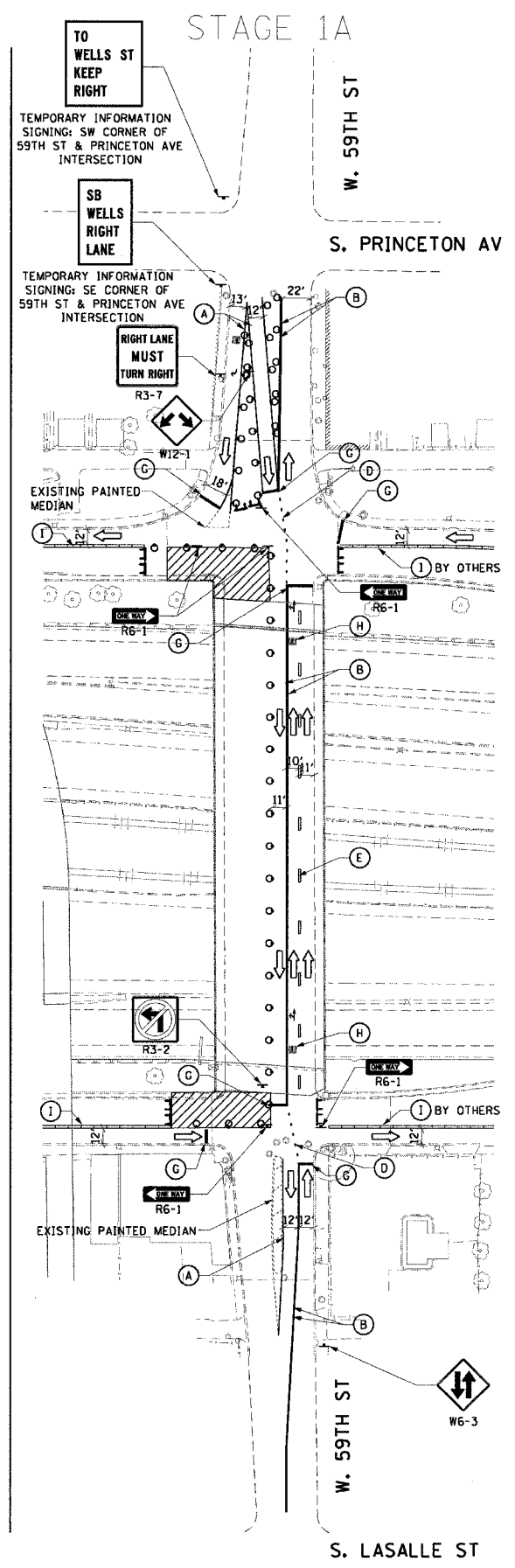
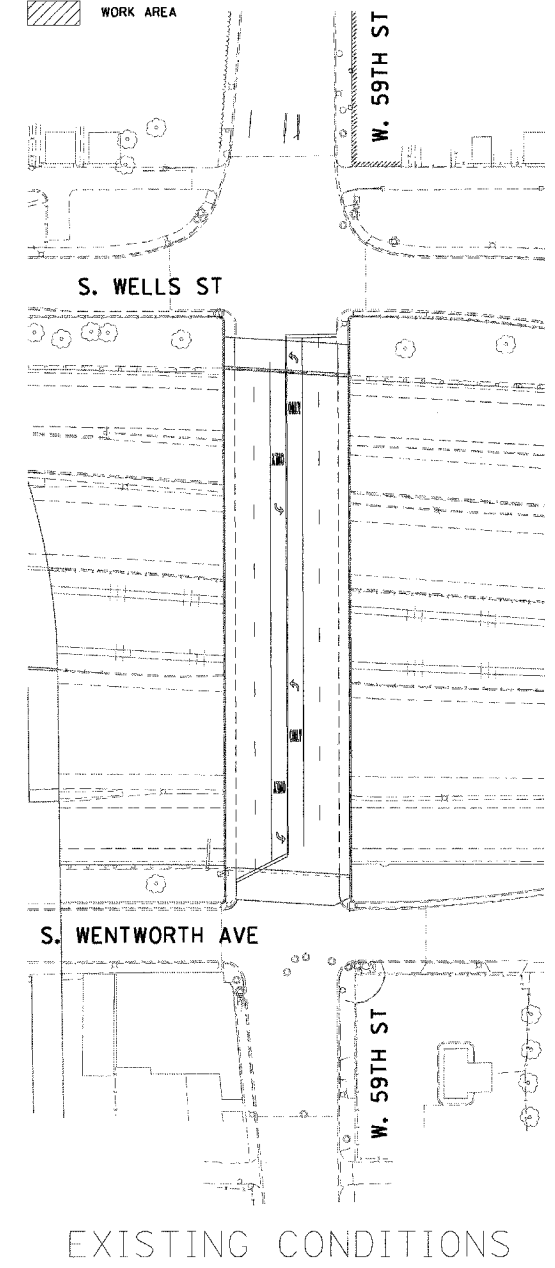


F.A.I. RT.:	SECTION	COUNTY	TOTAL SHEETS	SHEET NO.
90/94	2004-098TS	COOK	63	20
STA.	TO STA.			
FED. ROAD DIST. NO. 1 ILLINOIS FED. AID PROJECT				
62839				

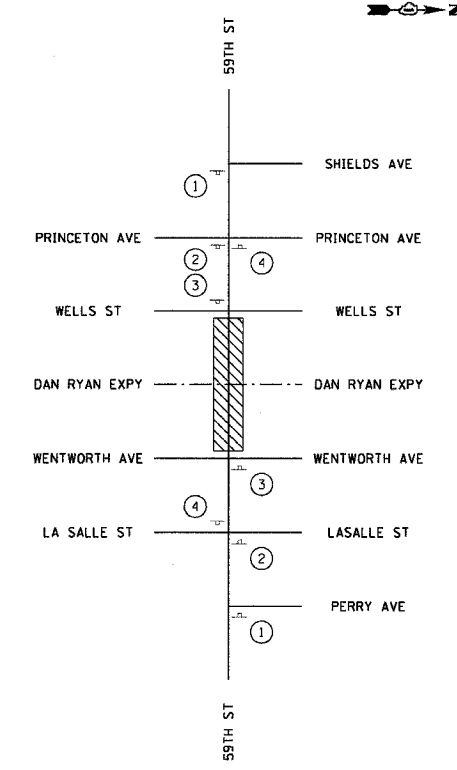
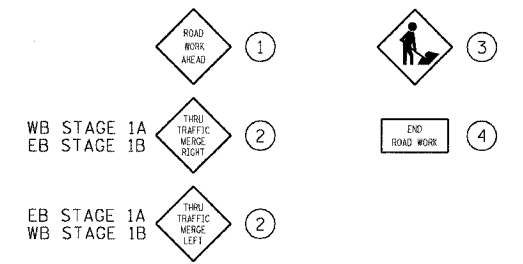
FOR REFERENCE ONLY  
WORK BY IDOT CONTRACT 9C-62693

**LEGEND**

- (A) TEMPORARY PAVEMENT MARKING 4", WHITE, SOLID
- (B) TEMPORARY PAVEMENT MARKING 4", YELLOW, SOLID
- (C) TEMPORARY PAVEMENT MARKING 4", WHITE, 2' DASH/6' SKIP
- (D) TEMPORARY PAVEMENT MARKING 4", YELLOW, 2' DASH/6' SKIP
- (E) TEMPORARY PAVEMENT MARKING 4", WHITE, 6' DASH/18' SKIP
- (F) TEMPORARY PAVEMENT MARKING 12", YELLOW, SOLID
- (G) TEMPORARY PAVEMENT MARKING 24", WHITE, SOLID
- (H) TEMPORARY PAVEMENT MARKING SYMBOLS
- (I) TEMPORARY CONCRETE BARRIER (CONTRACTOR FURNISHED)
- DRUM WITH STEADY BURNING LIGHT (25' SPACING, TYPICAL)
- T TYPE III BARRICADE
- ARROW BOARD
- ▨ WORK AREA



**TYPICAL SIGN PLACEMENT**



- NOTES:
- APPROACH PAVEMENT FOR THE 59TH STREET BRIDGE WILL NOT BE BUILT IN THIS CONTRACT.
  - MINIMUM SIGN SPACING OF 200'. PRECISE SIGN PLACEMENT NOT REPRESENTED. REFERENCE IDOT STANDARD 701601-03 FOR SPACING.
  - COMPLETION OF STAGE 1B SHOULD BE IMMEDIATELY FOLLOWED BY THE START OF STAGE 2A. IF STAGES 1A AND 1B ARE COMPLETE, AND THE SWITCH TO STAGE 2 IS NOT POSSIBLE FOR 7 OR MORE DAYS, ALL LANES OF THE BRIDGE ARE TO BE RESTORED AS SHOWN OR AS DIRECTED BY THE ENGINEER.
  - ALL MARKINGS SHOWN ARE PAVEMENT MARKING TAPE TYPE III.

REVISIONS	
NAME	DATE

ILLINOIS DEPARTMENT OF TRANSPORTATION  
F.A.I. 90/94 (DAN RYAN EXPRESSWAY)  
TRAFFIC SIGNALS AT 59TH STREET AND WENTWORTH AVENUE / WELLS STREET

SUGGESTED STAGES OF CONSTRUCTION AND TRAFFIC CONTROL  
STAGE 1

SCALE: 1"=60'  
DATE: November 12, 2004

DRAWN BY: SWANG  
CHECKED BY: RMG

MAY-04-0656/CMV/AC-Crit/9C-Add\_Conf/9C07-59TH/ST/9C70062A.DWG