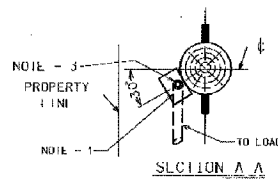
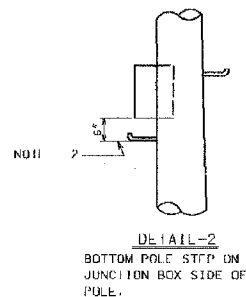
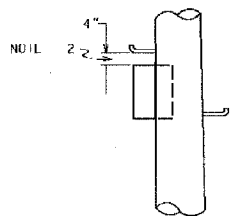
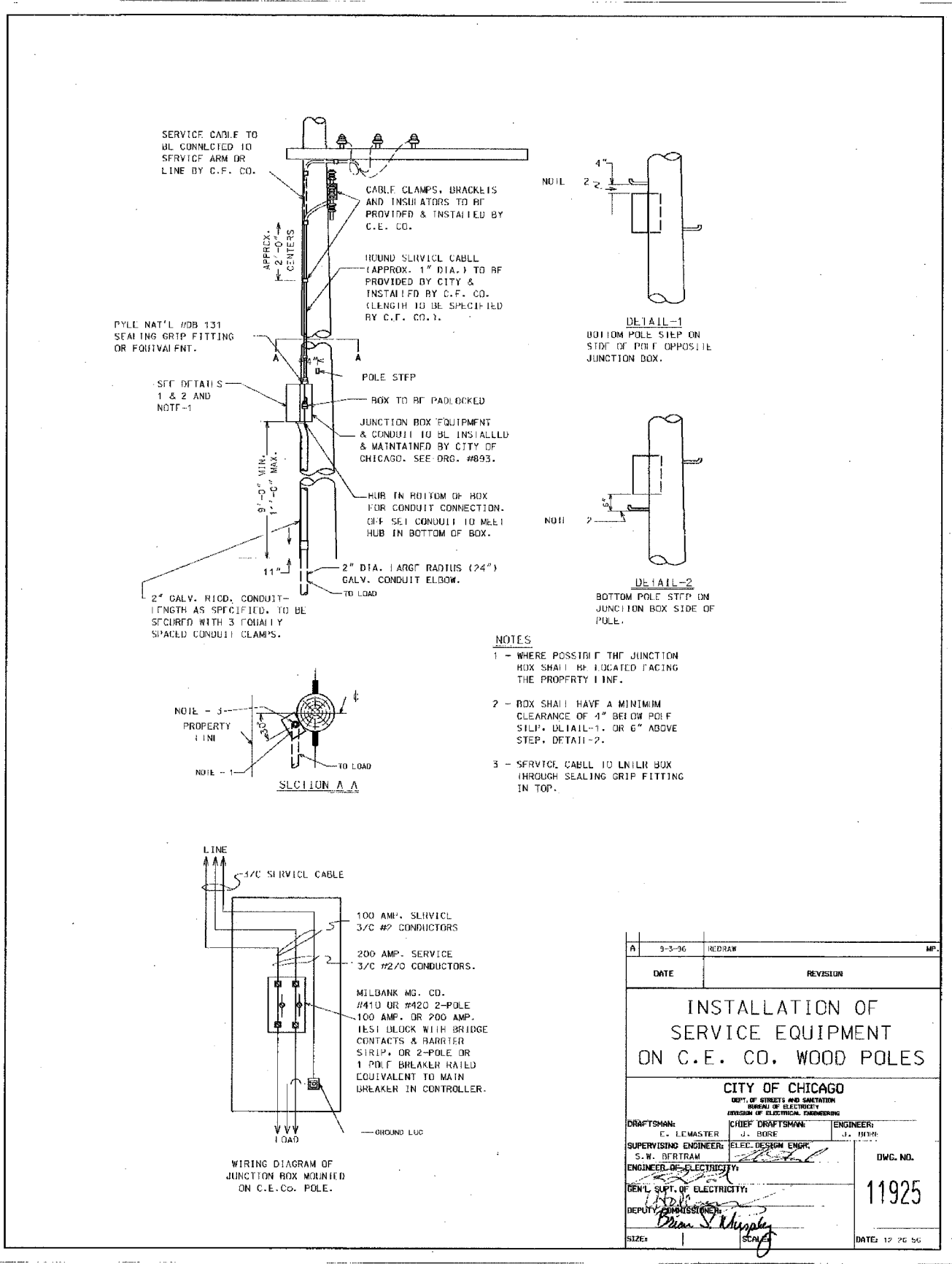
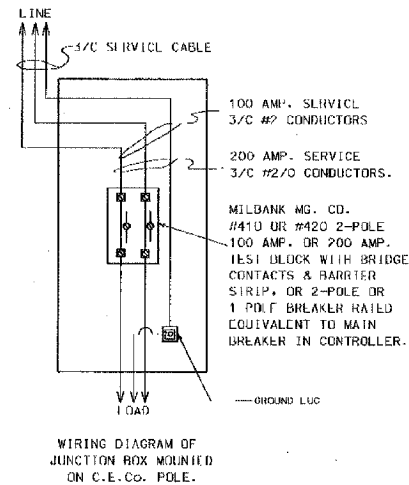


F.A.I. RTE.	SECTION	COUNTY	TOTAL SHEETS	SHEET NO.
90/94	2004-098TS	COOK	63	59
STA.	TO STA.			
FED. ROAD DIST. NO. 1		ILLINOIS	FED. AID PROJECT	

62839



- NOTES**
- 1 - WHERE POSSIBLE THE JUNCTION BOX SHALL BE LOCATED FACING THE PROPERTY LINE.
 - 2 - BOX SHALL HAVE A MINIMUM CLEARANCE OF 4" BELOW POLE STEP, DETAIL-1, OR 6" ABOVE STEP, DETAIL-2.
 - 3 - SERVICE CABLE TO ENTER BOX THROUGH SEALING GRIP FITTING IN TOP.



DATE	REVISION	MP.
9-5-96	REDRAW	
INSTALLATION OF SERVICE EQUIPMENT ON C.E. CO. WOOD POLES		
CITY OF CHICAGO		
<small>DEPT. OF STREETS AND SANITATION BUREAU OF ELECTRICITY DIVISION OF ELECTRICAL ENGINEERING</small>		
DRAFTSMAN: E. LEMASTER	CHIEF DRAFTSMAN: J. BORE	ENGINEER: J. BORE
SUPERVISING ENGINEER: S. W. DRYTRAM	ELEC. DESIGN ENGR. <i>[Signature]</i>	DWG. NO. 11925
ENGINEER OF ELECTRICITY: <i>[Signature]</i>	DEPT. CHIEF OF ELECTRICITY: <i>[Signature]</i>	DATE: 12-26-96
DEPUTY COMMISSIONER: <i>[Signature]</i>	SCA	

REVISIONS	
NAME	DATE

ILLINOIS DEPARTMENT OF TRANSPORTATION
F.A.I. 90/94 (DAN RYAN EXPRESSWAY)
TRAFFIC SIGNALS AT 59TH STREET AND
WENTWORTH AVENUE / WELLS STREET

BOE STANDARD DETAILS

SCALE: NOT TO SCALE
DATE: November 12, 2004
DRAWN BY: HAR
CHECKED BY: WDS