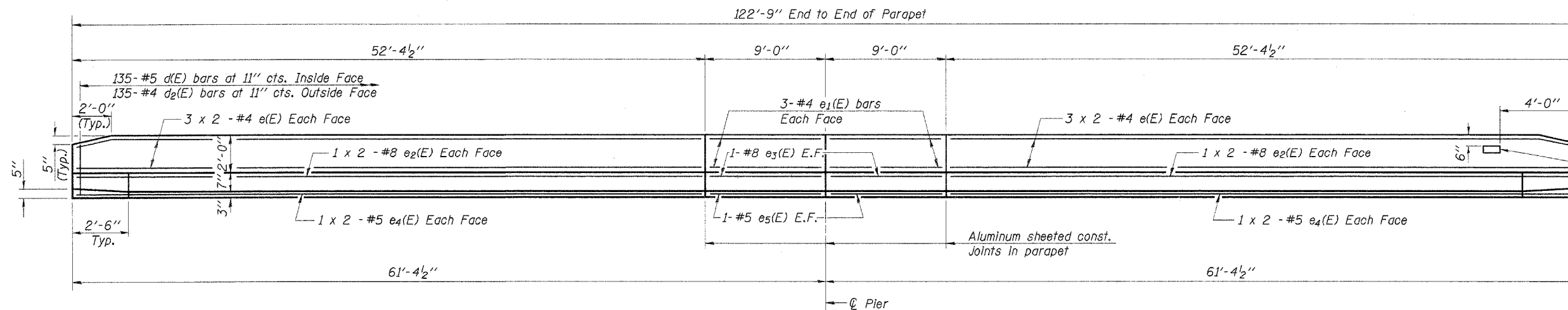


ROUTE NO.	SECTION	COUNTY	TOTAL SHEETS	SHEET NO.
FAP 697	17BR-1	FORD	42	2

CONTRACT NO. 66363
Sheet 8 of 20



INSIDE ELEVATION OF PARAPET

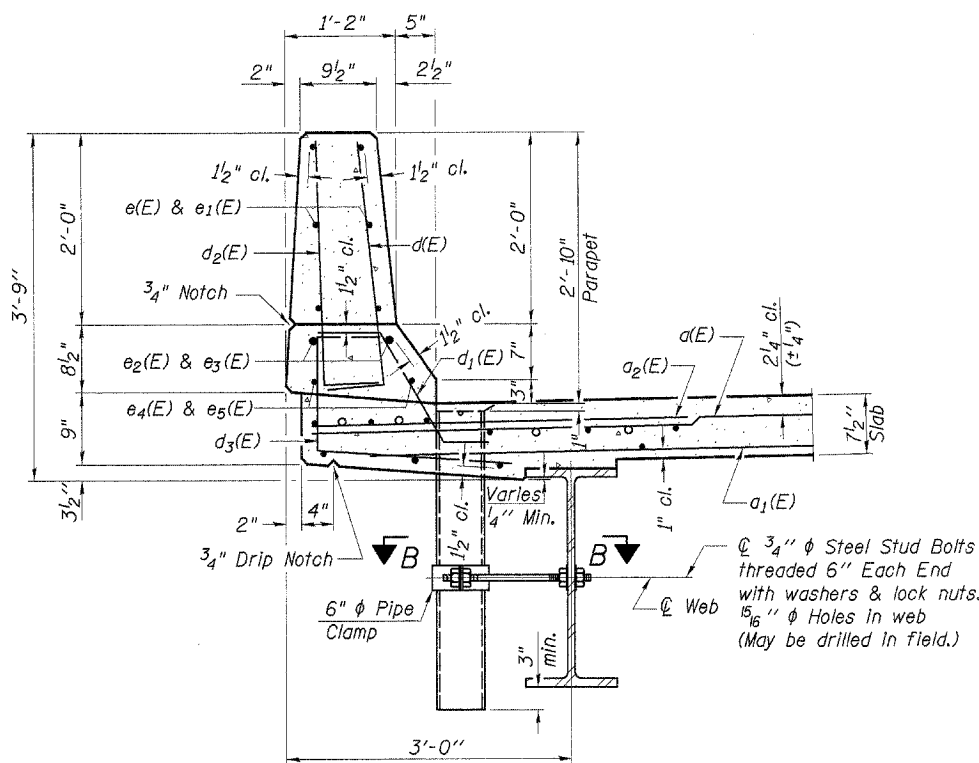
Locate Name Plate on the Inside face of the West corner of the South Parapet.

SUPERSTRUCTURE BILL OF MATERIAL

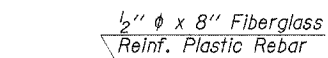
Bar	No.	Size	Length	Shape
a(E)	394	#5	17'-1"	—
a1(E)	296	#5	16'-6"	—
a2(E)	198	#6	4'-0"	—
b(E)	152	#5	31'-11"	—
b1(E)	35	#6	38'-10"	—
b2(E)	180	#5	25'-10"	—
c(E)	270	#5	3'-0"	—
d1(E)	258	#5	2'-7"	—
d2(E)	270	#4	3'-0"	—
d3(E)	270	#4	4'-0"	—
d4(E)	12	#5	2'-6"	—
e(E)	48	#4	26'-9"	—
e1(E)	24	#4	8'-9"	—
e2(E)	16	#8	27'-11"	—
e3(E)	8	#8	8'-9"	—
e4(E)	16	#5	26'-11"	—
m(E)	8	#6	16'-6"	—
m1(E)	12	#6	17'-5"	—
m2(E)	8	#6	17'-4"	—
m3(E)	10	#6	5'-6"	—
m4(E)	4	#6	2'-9"	—
s(E)	72	#5	6'-11"	—
s1(E)	72	#4	8'-4"	—
v(E)	68	#5	3'-1"	—
Reinforcement Bars, Epoxy Coated		Pound	32,870	
Concrete Superstructure		Cu. Yds.	144.4	
Protective Coat		Sq. Yd.	539	
Floor Drains		Each	16	
Name Plates		Each	1	
Bridge Deck Grooving		Sq. Yd.	437	

MIN. PARAPET BAR LAPS

- #4 1'-4"
- #5 1'-8"
- #8 3'-8"



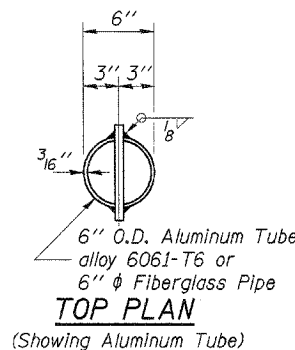
SECTION THRU PARAPET



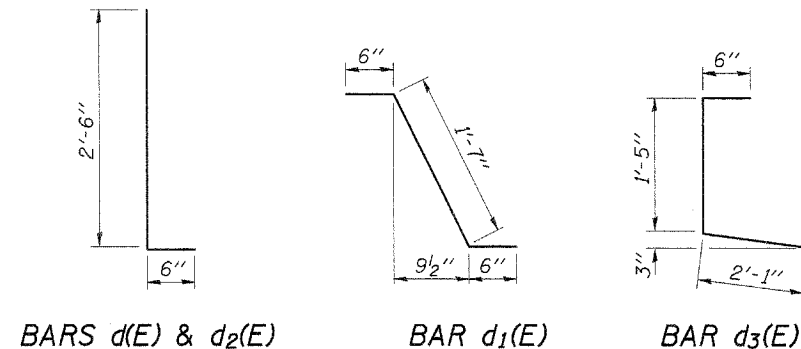
FIBERGLASS PIPE



ALUMINUM TUBE



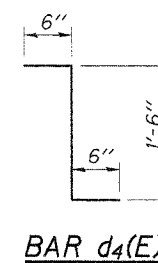
TOP PLAN (Showing Aluminum Tube)



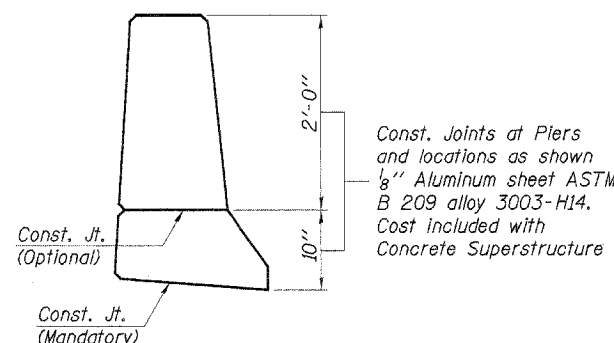
BARS d(E) & d2(E)

BAR d1(E)

BAR d3(E)



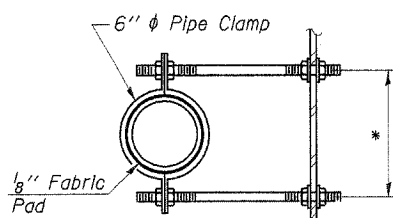
BAR d4(E)



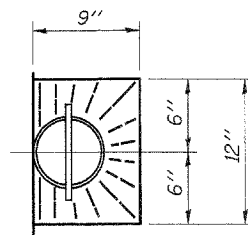
PARAPET JOINT DETAILS

Notes:
The exterior surface of the floor drains do not need to be painted.
Fiberglass pipe shall conform to ASTM D 2996, with short-time rupture strength hoop tensile stress of 30,000 p.s.i. minimum.

*Dimension as required by Pipe Clamp



SECTION B-B



TOP PLAN

DESIGNED	P.S.L.
CHECKED	A.R.K. & F.J.S.
DRAWN	K.T.R.
CHECKED	P.S.L. & A.R.K.
S-2-D	9-01-03

Work this sheet with Sheets 7 and 9 of 20.

SUPERSTRUCTURE DETAILS

IL. RTE. 9 OVER WALL TOWN DRAINAGE DITCH
FAP ROUTE 697 - SECTION 17BR-1
FORD COUNTY
STATION 993+80.38
S.N. 027-0094

4440 ASH GROVE SPRINGFIELD, IL 62707 (217) 793-8800 oasinc@tamvid.com	OZYURT AND STONE, INC. CONSULTING ENGINEERS	JOB NO.: 0306.2 FILE: SUPER03.D DATE: 06-08-04
--	---	--