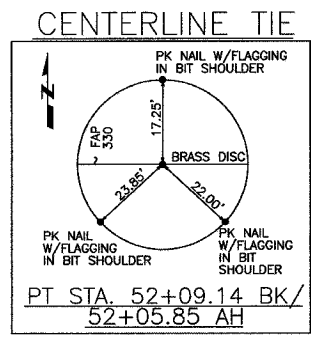
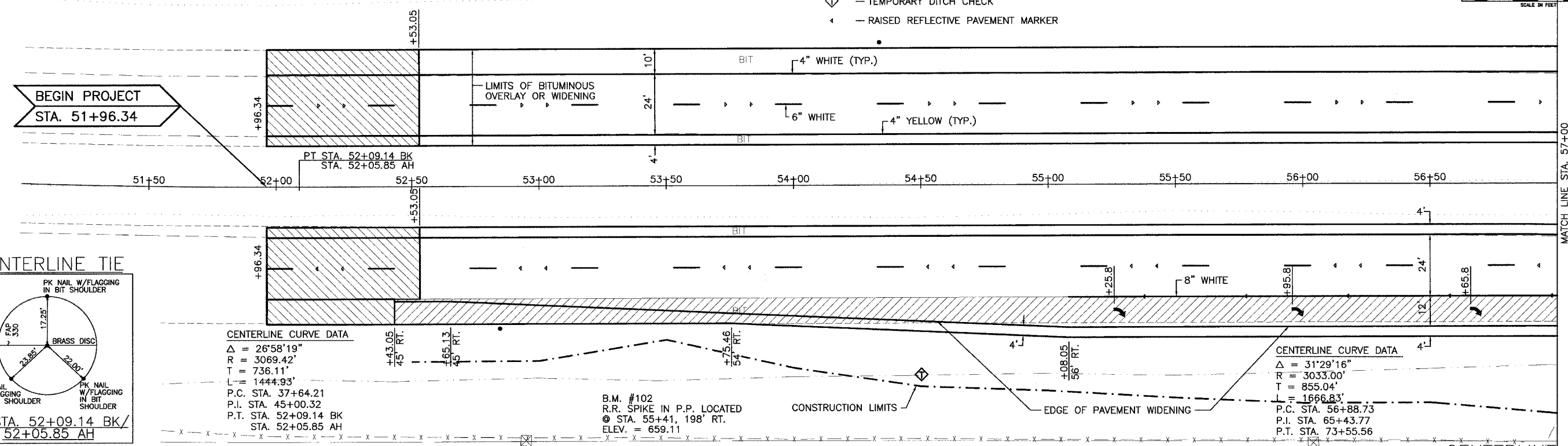


F.A.P. RTE.	SECTION	COUNTY	TOTAL SHEETS	SHEET NO.
330	(1R)TS	KANKAKEE	22	7
STA. 51+00		TO STA. 57+00		
FED. ROAD DIST. NO. 7 ILLINOIS FED. AID PROJECT				
CONTRACT NO. 66416				
SCALE IN FEET				

- BUTIMINOUS SURFACE REMOVAL - BUTT JOINT
- PAVED SHOULDER REMOVAL
- TEMPORARY DITCH CHECK
- RAISED REFLECTIVE PAVEMENT MARKER



CENTERLINE CURVE DATA

Δ = 26°58'19"
 R = 3069.42'
 T = 736.11'
 L = 1444.93'
 P.C. STA. 37+64.21
 P.I. STA. 45+00.32
 P.T. STA. 52+09.14 BK
 STA. 52+05.85 AH

CENTERLINE CURVE DATA

Δ = 31°29'16"
 R = 3033.00'
 T = 855.04'
 L = 1666.83'
 P.C. STA. 56+88.73
 P.I. STA. 65+43.77
 P.T. STA. 73+55.56

PLAN
 SURVEYED
 PLOTTED
 CHECKED
 DATE
 BY

PROFILE
 SURVEYED
 PLOTTED
 CHECKED
 DATE
 BY

