

F.A.P. RTE.	SECTION	COUNTY	TOTAL SHEETS	SHEET NO.
330	(1R)TS	KANKAKEE	22	14
FED. ROAD DIST. NO. 7 ILLINOIS FED. AID PROJECT				

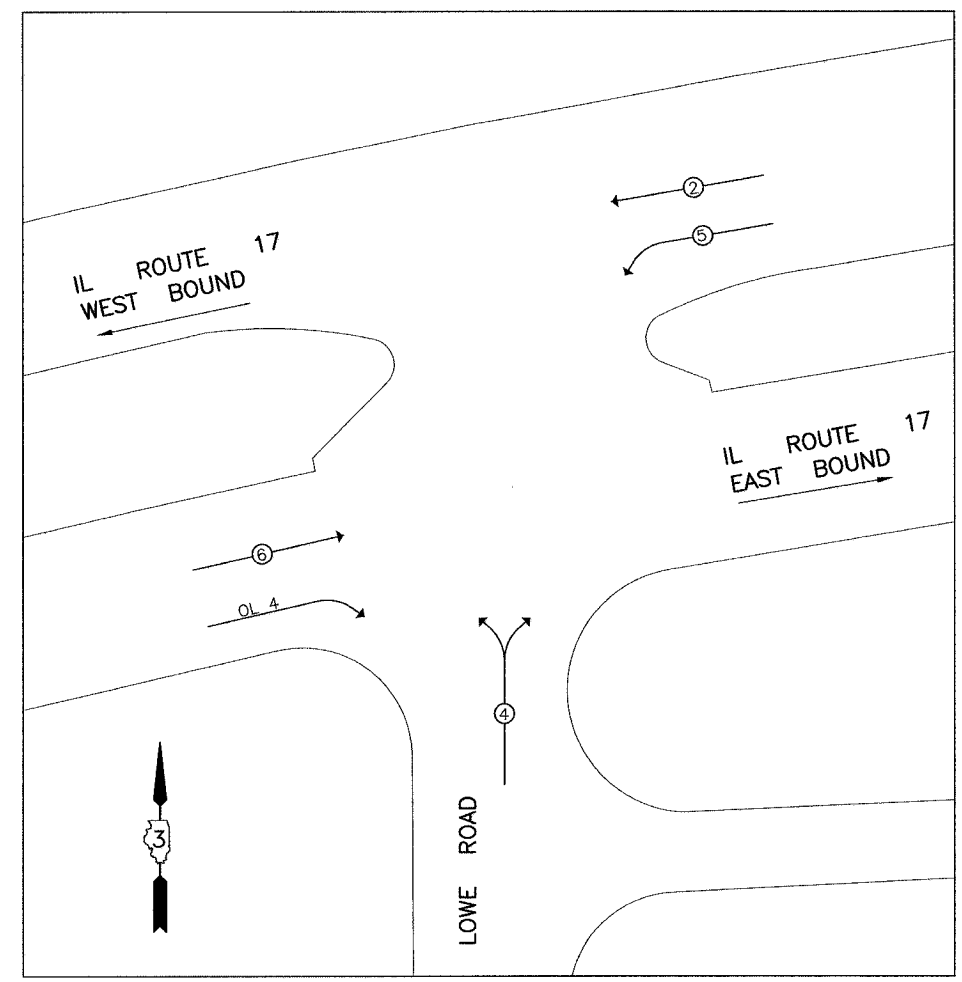
CONTRACT NO. 66416

CONTROLLER SEQUENCE

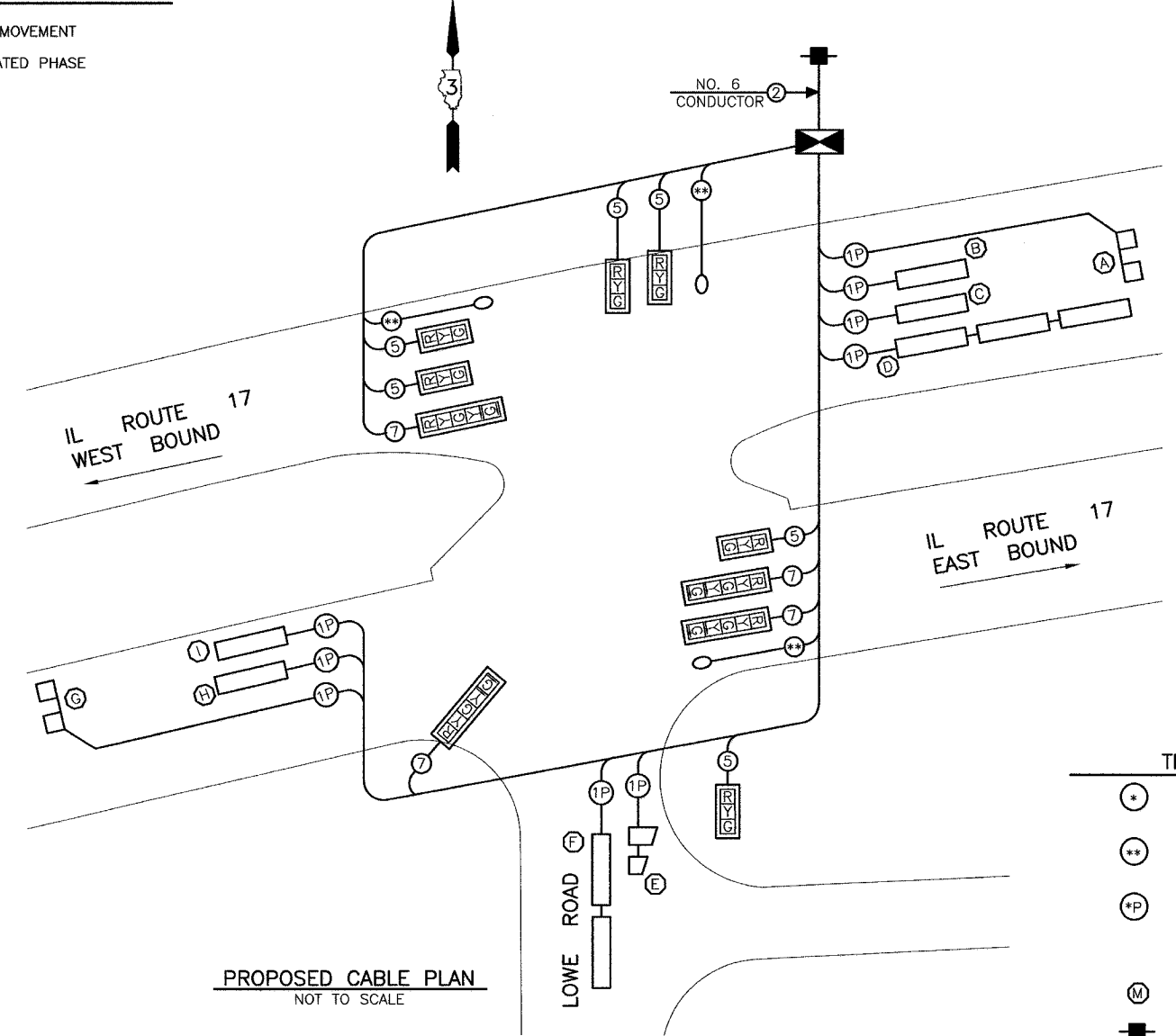
NAME OF INTERSECTION: U.S. 24 & ILL. 1
 CONTROLLER SPECIFIED: FULL - ACTIVATED CONTROLLER, STANDARD SEQUENCE II, 8 PHASE, IN TYPE IV CABINET REFERRING TO STANDARD 857001. THE VEHICULAR AND PEDESTRIAN PHASES USED ARE DESIGNATED BELOW.

LEGEND

← ⊙ → VEHICULAR MOVEMENT
 * NUMBER REFERS TO ASSOCIATED PHASE



PHASE DESIGNATION DIAGRAM
NOT TO SCALE

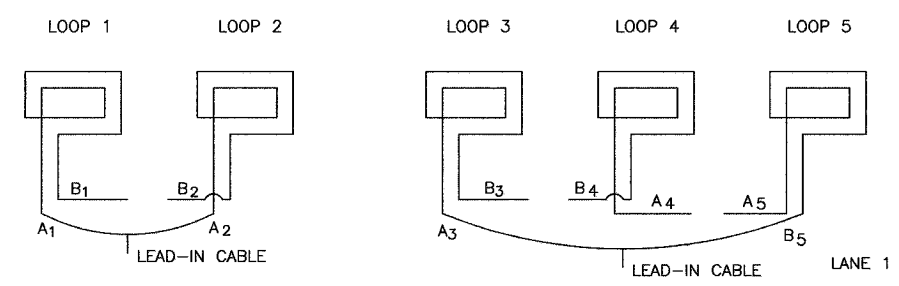
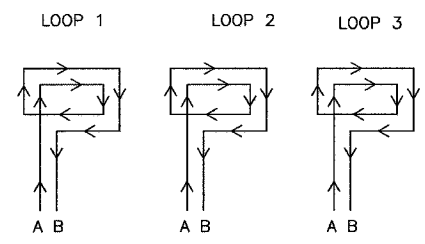


PROPOSED CABLE PLAN
NOT TO SCALE

TRAFFIC SIGNALS LEGEND

- ⊙ DENOTES NUMBER OF CONDUCTORS (NEW) ALL CABLE NO. 14 EXCEPT AS INDICATED
- ** DENOTES 3-1 CONDUCTOR, NO. 10 CABLE, 600V (XLP-TYPE USE)
- +P DENOTES NUMBER OF PAIR OF WIRE (NEW) ALL LOOP DETECTOR CABLE TO BE TWISTED, SHIELDED ALL CABLE NO. 14 EXCEPT AS INDICATED
- Ⓜ DENOTES PROPOSED DETECTOR LOOP SYSTEM
- ⊠ DENOTES PROPOSED SERVICE INSTALLATION
- ⊠ DENOTES PROPOSED CONTROLLER CABINET
- ▭ DENOTES PROPOSED VEHICLE DETECTOR, INDUCTION LOOP
- ⊙ DENOTES LUMINAIRE
- RYG DENOTES PROPOSED SIGNAL FACE WITH BACK PLATE
- R DENOTES 12" SIGNAL SECTION

STEP 1
 WIND ALL LOOPS CLOCKWISE. LABEL BEGINNING END OF CABLE A. LABEL ENDING END OF CABLE B. FOLLOW DETECTOR LOOP CABLE MANUFACTURER'S INSTRUCTIONS ON NUMBER OF TURNS FOR LOOP.



STEP 2
 CONNECT LEAD B OF LOOP 1 TO LEAD B OF LOOP 2.
 CONNECT LEAD A OF LOOP 2 TO LEAD A OF LOOP 3.

DETECTOR LOOP WINDING AND SERIES SPLICING DETAIL
 (SEE DETECTOR LOOP INDUCTANCE CHART FOR NUMBER OF TURNS)

DESIGNED	M.V.F.
CHECKED	J.L.S.
DRAWN	J.M.M.
CHECKED	M.V.F.

IL ROUTE 17
 AND CH 38 / LOWE ROAD
 CABLE PLAN
 FAP ROUTE 330, FAU ROUTE 6209
 SEC. NO. (1R)TS
 KANKAKEE COUNTY