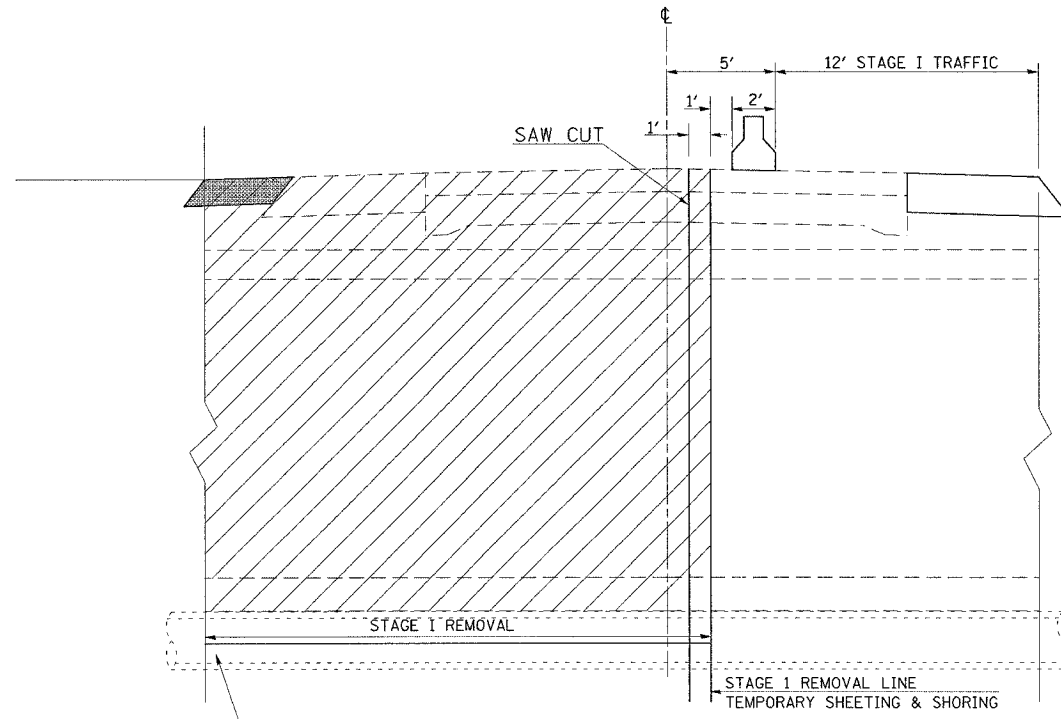


### STAGE I REMOVAL DETAIL

STATION 724+23.00



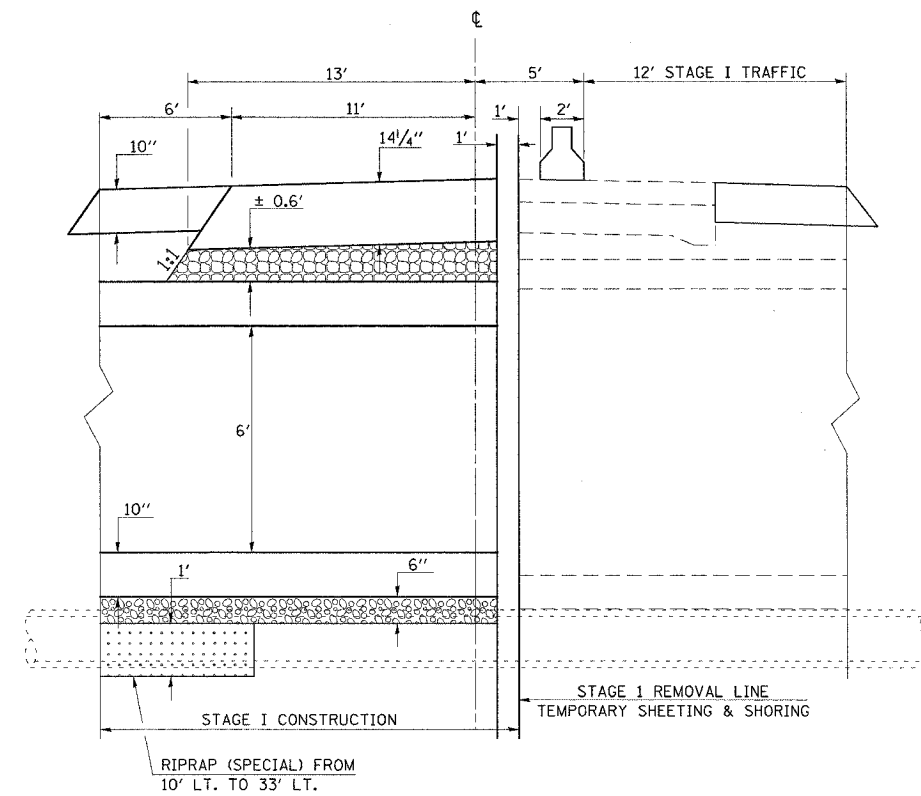
CONTRACTOR SHALL VERIFY LOCATION OF 20" DIA. DRAIN TILE AND PROTECT SAME DURING CONSTRUCTION.

### STAGE I CONSTRUCTION DETAIL

STATION 724+23.00

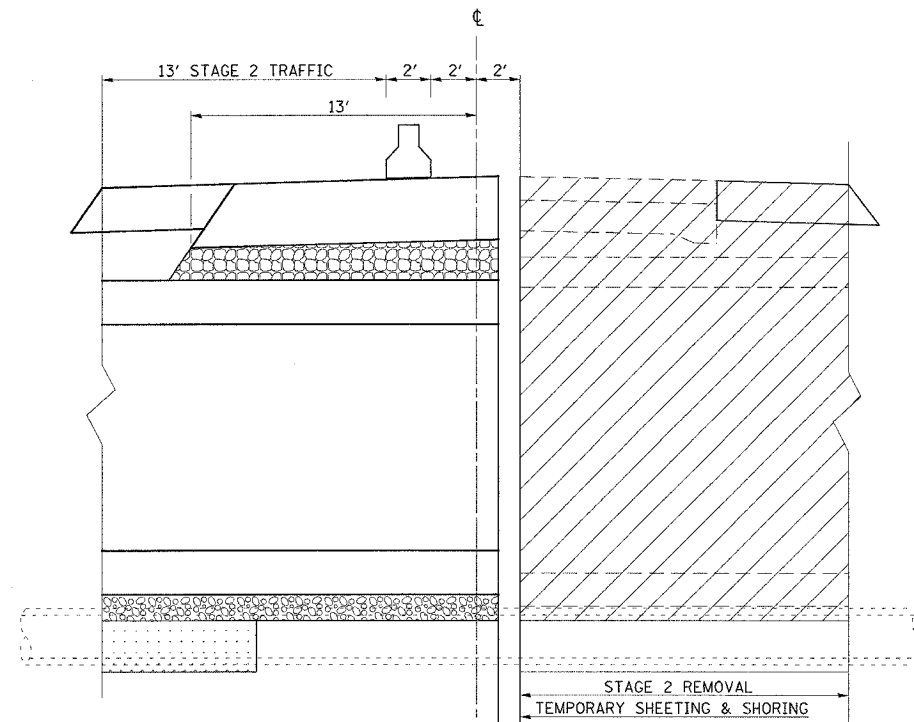
F.A.P. RTE.	SECTION	COUNTY	TOTAL SHEETS	SHEET NO.
332	(48X-2)BR-2	VERMILION	26	10

CONTRACT NO. 70017



### STAGE II REMOVAL DETAIL

STATION 724+23.00



### STAGE II CONSTRUCTION DETAIL

STATION 724+23.00

