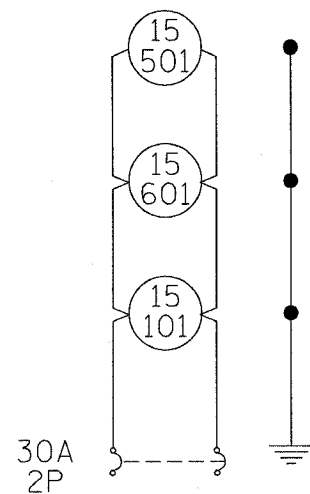
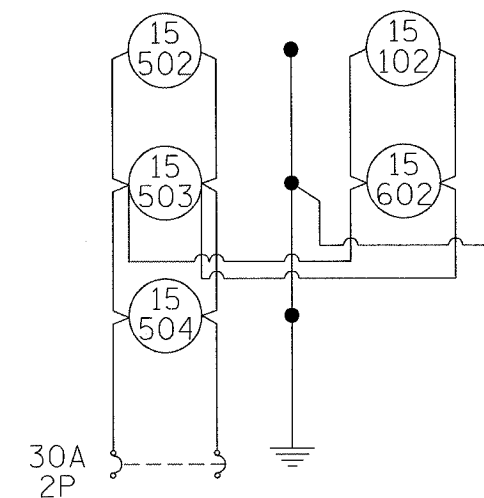


F.A.I. RTE.	SECTION	COUNTY	TOTAL SHEETS	SHEET NO.
57		CHAMPAIGN	10	5

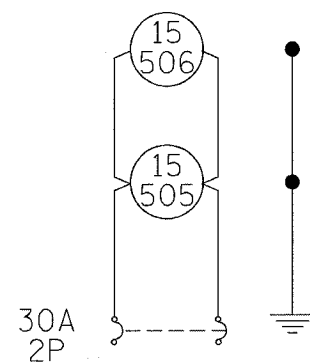
CONTRACT NO. 70441
 D-5 CONTRACT MAINT 2005-1



WIRING DIAGRAM
 CIRCUIT A



WIRING DIAGRAM
 CIRCUIT B



WIRING DIAGRAM
 CIRCUIT C

SYMBOL LEGEND

- HIGH MAST LIGHT TOWER. ARROWS INDICATE AIMING DIRECTION OF LUMINAIRES
- LIGHT TOWER TO BE REMOVED
- 400W, HPS, MULTI-MOUNT LUMINAIRE, 45 FT. MOUNTING HEIGHT, WEATHERING STEEL POLE
- UNIT DUCT
- CONDUIT PUSHED
- EXISTING SIGN TRUSS WITH LUMINAIRES. RECONNECT TO NEW CONDUCTORS.
- LIGHTING CONTROLLER
- LIGHTING UNIT TO BE REMOVED