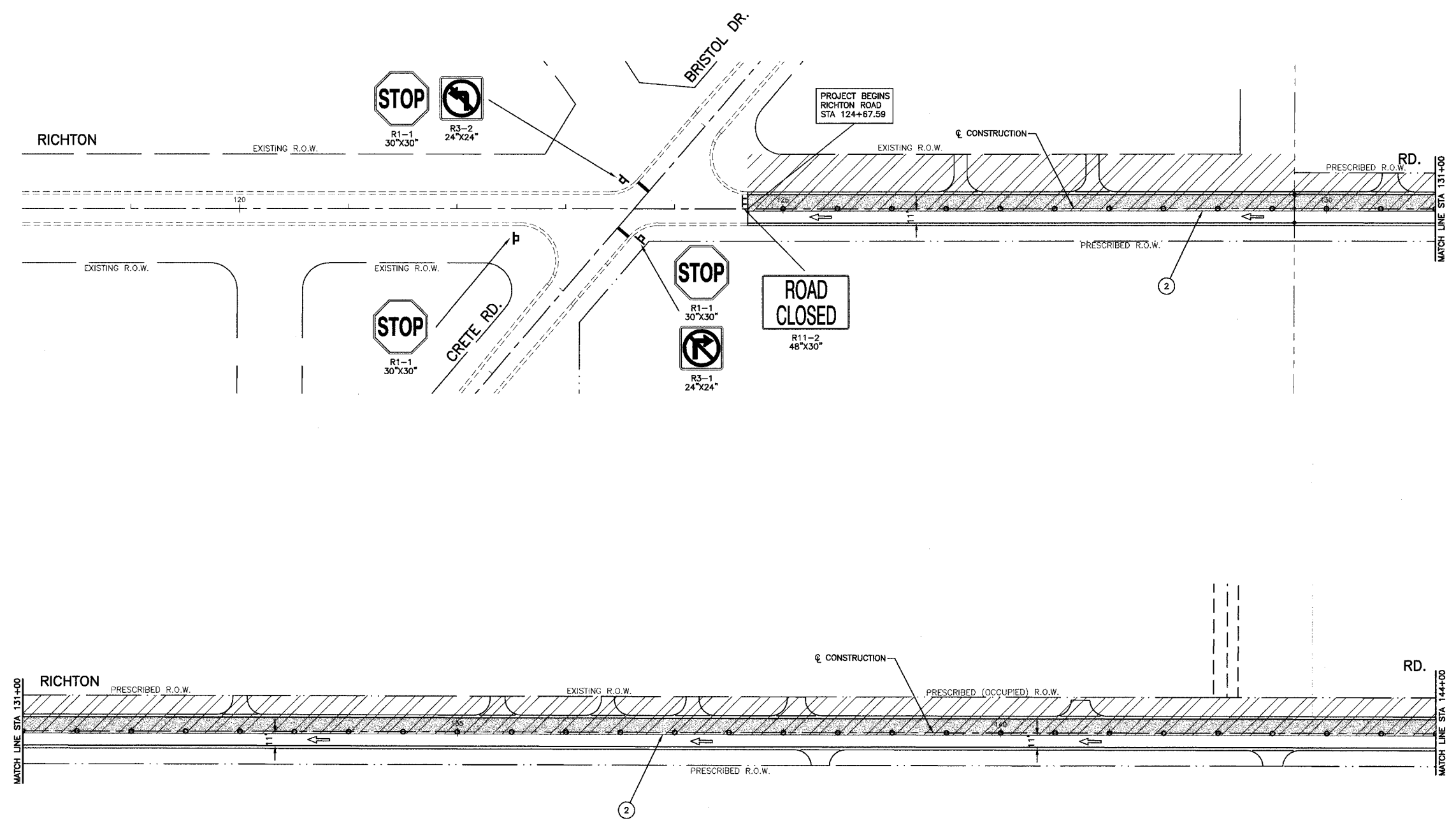


FAU. PTE.	SECTION	COUNTY	TOTAL SHEETS	SHEET NO.
1636	92-00037-03-PV	WILL	39	15
STA.		TO STA.		
FED. ROAD DIST. NO.	ILLINOIS	FED. AID PROJECT		

83680



LEGEND

- WORK AREA
- TEMPORARY PAVEMENT TO BE CONSTRUCTED (8")
- PAVEMENT CONSTRUCTION LIMITS
- VERTICAL PANEL WITH STEADY BURNING LIGHT (50' C-C)
- TYPE I OR II BARRICADE OR DRUM WITH STEADY BURNING LIGHTS (50' C-C)
- TYPE III BARRICADE WITH STEADY BURNING LIGHT
- SIGN
- 1 4" YELLOW EDGE LINE - TEMPORARY PAVEMENT MARKINGS
- 2 4" WHITE EDGE LINE - TEMPORARY PAVEMENT MARKINGS
- 3 24" WHITE STOP BAR - TEMPORARY PAVEMENT MARKINGS
- 4 4" DOUBLE YELLOW CENTER LINE - TEMPORARY PAVEMENT MARKING

REVISIONS	
NAME	DATE

ILLINOIS DEPARTMENT OF TRANSPORTATION

F.A.U. 1636 RICHTON ROAD

SUGGESTED CONSTRUCTION STAGING
STAGE 3 - RICHTON RD
BEGIN PROJECT TO STA 144+00

SCALE: VERT. 1"=50'
HORIZ. 1"=50'

DATE 02-17-03

DRAWN BY
CHECKED BY

ROBINSON ENGINEERING, LTD.
CONSULTING REGISTERED PROFESSIONAL ENGINEERS
AND PROFESSIONAL LAND SURVEYORS
357 EAST 170TH STREET, SOUTH HOLLAND, ILLINOIS 60473-0388
95313-TC00N-05