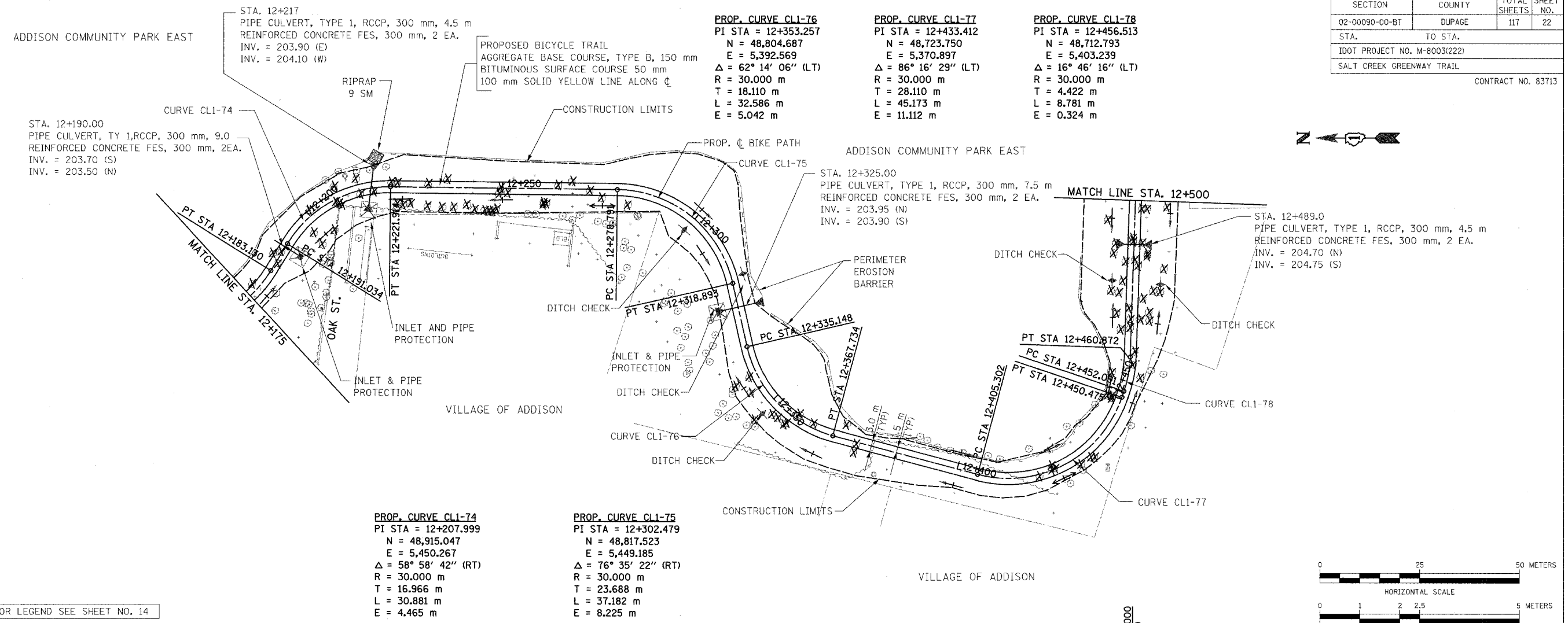
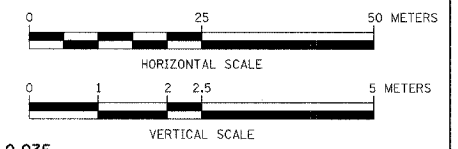


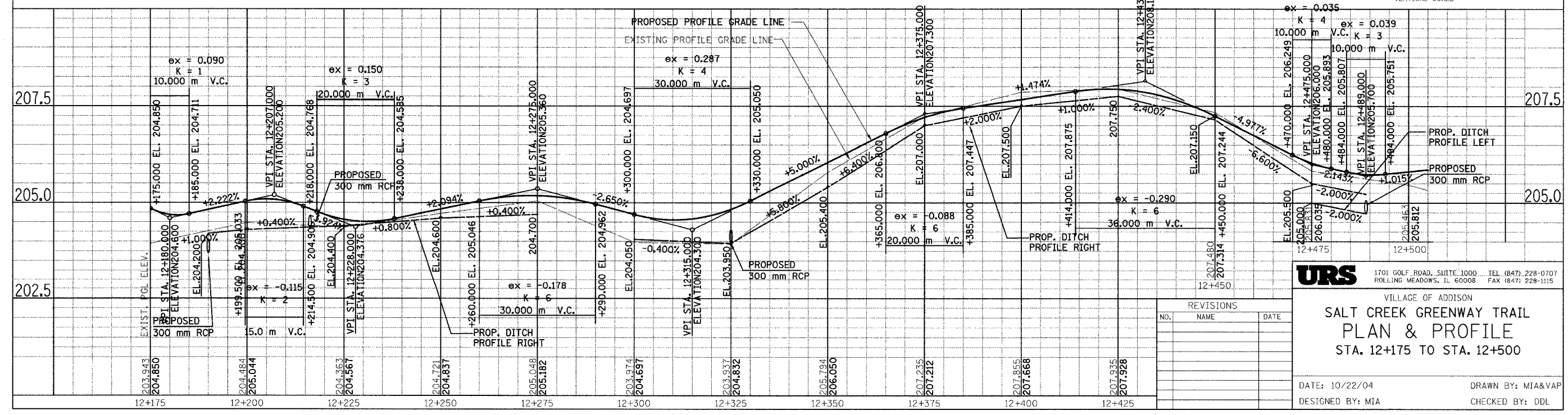
SECTION	COUNTY	TOTAL SHEETS	SHEET NO.
02-00090-00-BT	DUPAGE	117	22
STA.	TO STA.		
IDOT PROJECT NO. M-8003(222)			
SALT CREEK GREENWAY TRAIL			
CONTRACT NO. 83713			



FOR LEGEND SEE SHEET NO. 14



- PROP. CURVE CL1-74**
 PI STA = 12+207.999
 N = 48,915.047
 E = 5,450.267
 $\Delta = 58^\circ 58' 42''$ (RT)
 R = 30.000 m
 T = 16.966 m
 L = 30.881 m
 E = 4.465 m
- PROP. CURVE CL1-75**
 PI STA = 12+302.479
 N = 48,817.523
 E = 5,449.185
 $\Delta = 76^\circ 35' 22''$ (RT)
 R = 30.000 m
 T = 23.688 m
 L = 37.182 m
 E = 8.225 m



REVISIONS		
NO.	NAME	DATE

URS
 1701 GOLF ROAD, SUITE 1000 TEL (847) 228-0707
 ROLLING MEADOWS, IL 60008 FAX (847) 228-1115

VILLAGE OF ADDISON
SALT CREEK GREENWAY TRAIL
PLAN & PROFILE
 STA. 12+175 TO STA. 12+500

DATE: 10/22/04 DRAWN BY: MIA&VAP
 DESIGNED BY: MIA CHECKED BY: DDL