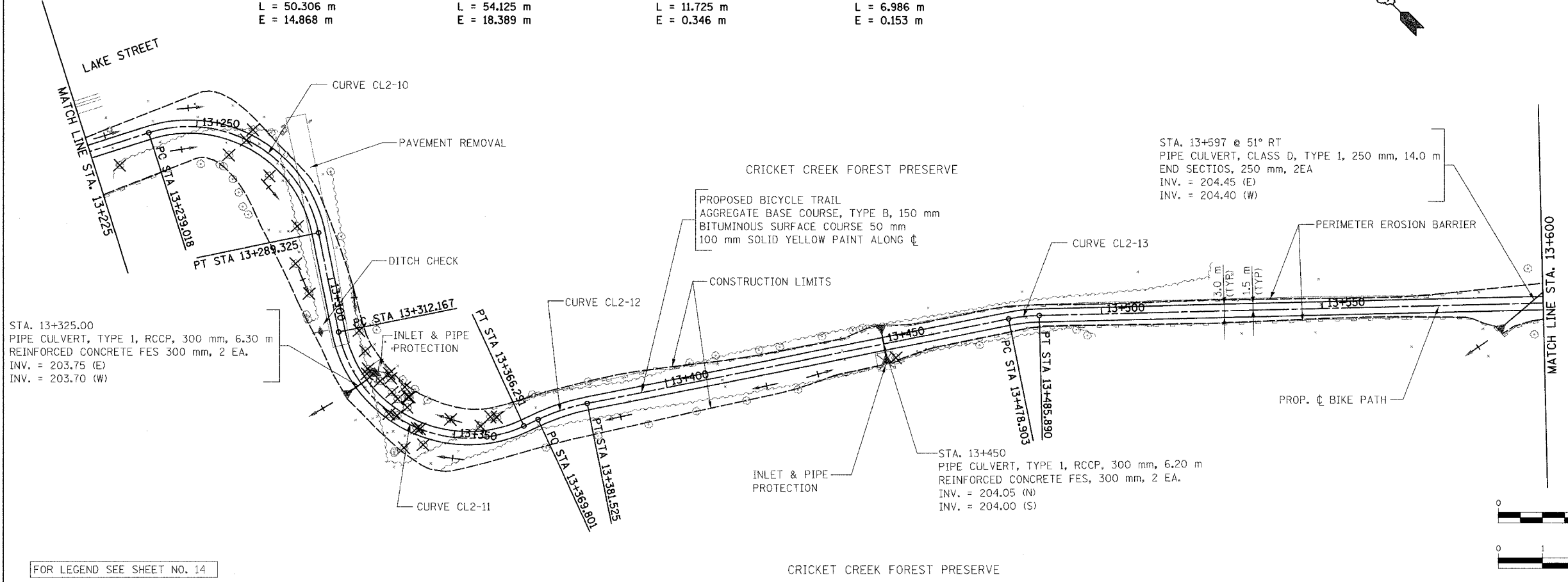
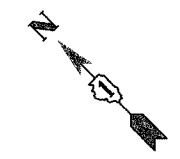


SECTION	COUNTY	TOTAL SHEETS	SHEET NO.
02-00090-00-BT	DUPAGE	117	25
STA.	TO STA.		
IDOT PROJECT NO. M-8003(222)			
SALT CREEK GREENWAY TRAIL			
CONTRACT NO. 83713			

PROP. CURVE CL2-10 PI STA = 13+272.382 N = 48,362.456 E = 5,904.720 $\Delta = 96^\circ 04' 42''$ (RT) R = 30.000 m T = 33.364 m L = 50.306 m E = 14.868 m	PROP. CURVE CL2-11 PI STA = 13+350.133 N = 48,283.945 E = 5,852.714 $\Delta = 103^\circ 22' 15''$ (LT) R = 30.000 m T = 37.967 m L = 54.125 m E = 18.389 m	PROP. CURVE CL2-12 PI STA = 13+375.690 N = 48,267.629 E = 5,897.181 $\Delta = 13^\circ 26' 08''$ (RT) R = 50.000 m T = 5.889 m L = 11.725 m E = 0.346 m	PROP. CURVE CL2-13 PI STA = 13+482.405 N = 48,208.567 E = 5,986.127 $\Delta = 10^\circ 00' 27''$ (RT) R = 40.000 m T = 3.502 m L = 6.986 m E = 0.153 m
--	---	--	---

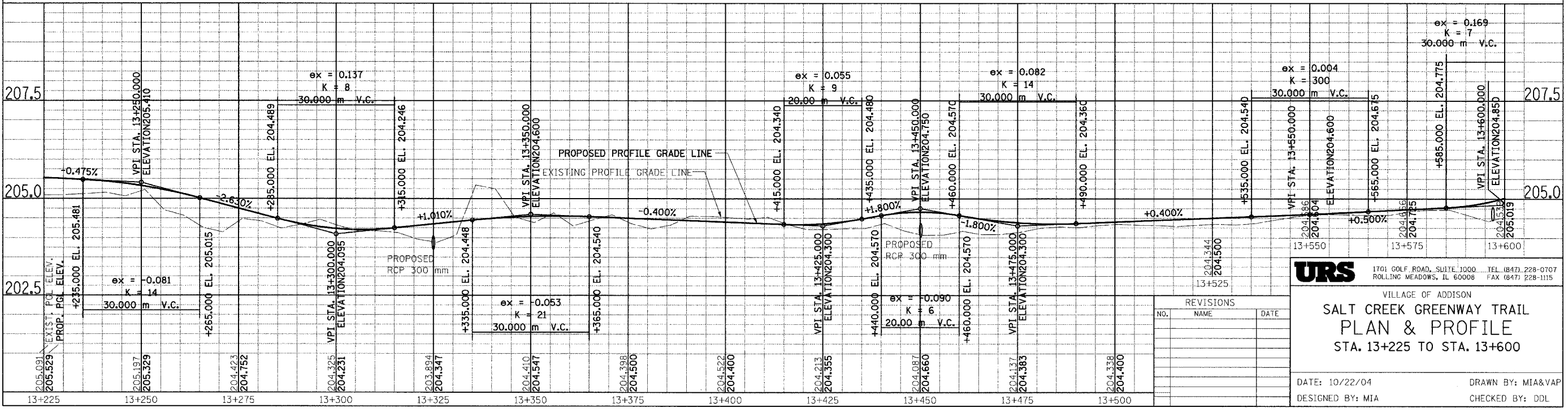
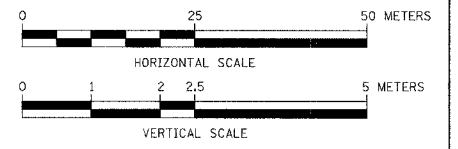


STA. 13+325.00
 PIPE CULVERT, TYPE 1, RCCP, 300 mm, 6.30 m
 REINFORCED CONCRETE FES 300 mm, 2 EA.
 INV. = 203.75 (E)
 INV. = 203.70 (W)

STA. 13+597 @ 51° RT
 PIPE CULVERT, CLASS D, TYPE 1, 250 mm, 14.0 m
 END SECTIOS, 250 mm, 2EA
 INV. = 204.45 (E)
 INV. = 204.40 (W)

STA. 13+450
 PIPE CULVERT, TYPE 1, RCCP, 300 mm, 6.20 m
 REINFORCED CONCRETE FES, 300 mm, 2 EA.
 INV. = 204.05 (N)
 INV. = 204.00 (S)

FOR LEGEND SEE SHEET NO. 14



URS 1701 GOLF ROAD, SUITE 1000 TEL (847) 228-0707
 ROLLING MEADOWS, IL 60008 FAX (847) 228-1115

VILLAGE OF ADDISON
SALT CREEK GREENWAY TRAIL
PLAN & PROFILE
 STA. 13+225 TO STA. 13+600

REVISIONS		
NO.	NAME	DATE

DATE: 10/22/04
 DESIGNED BY: MIA
 DRAWN BY: MIA&VAP
 CHECKED BY: DDL