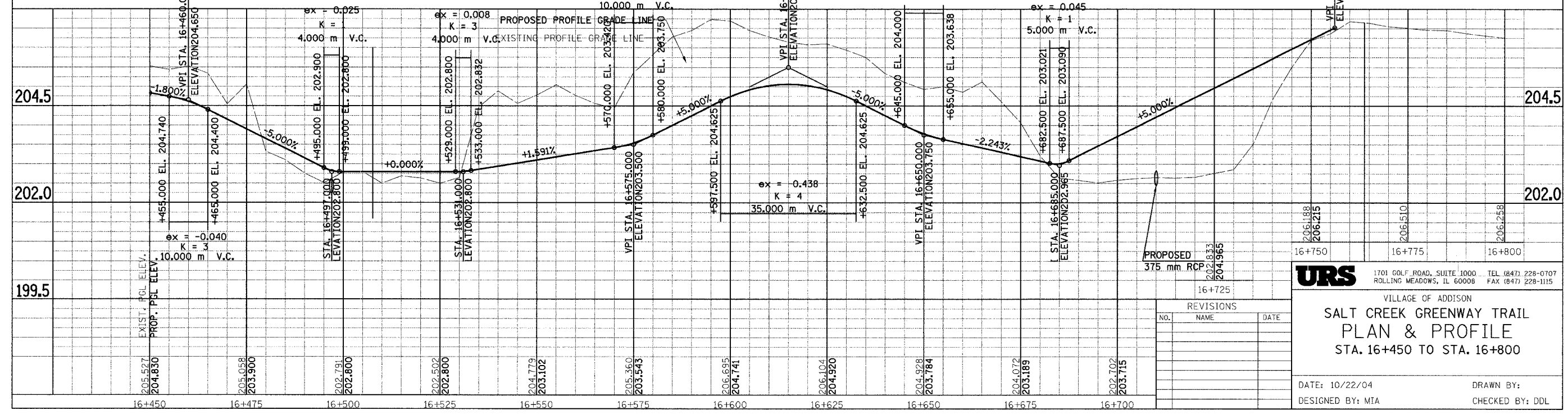
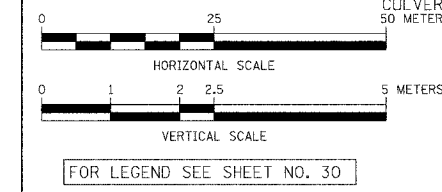
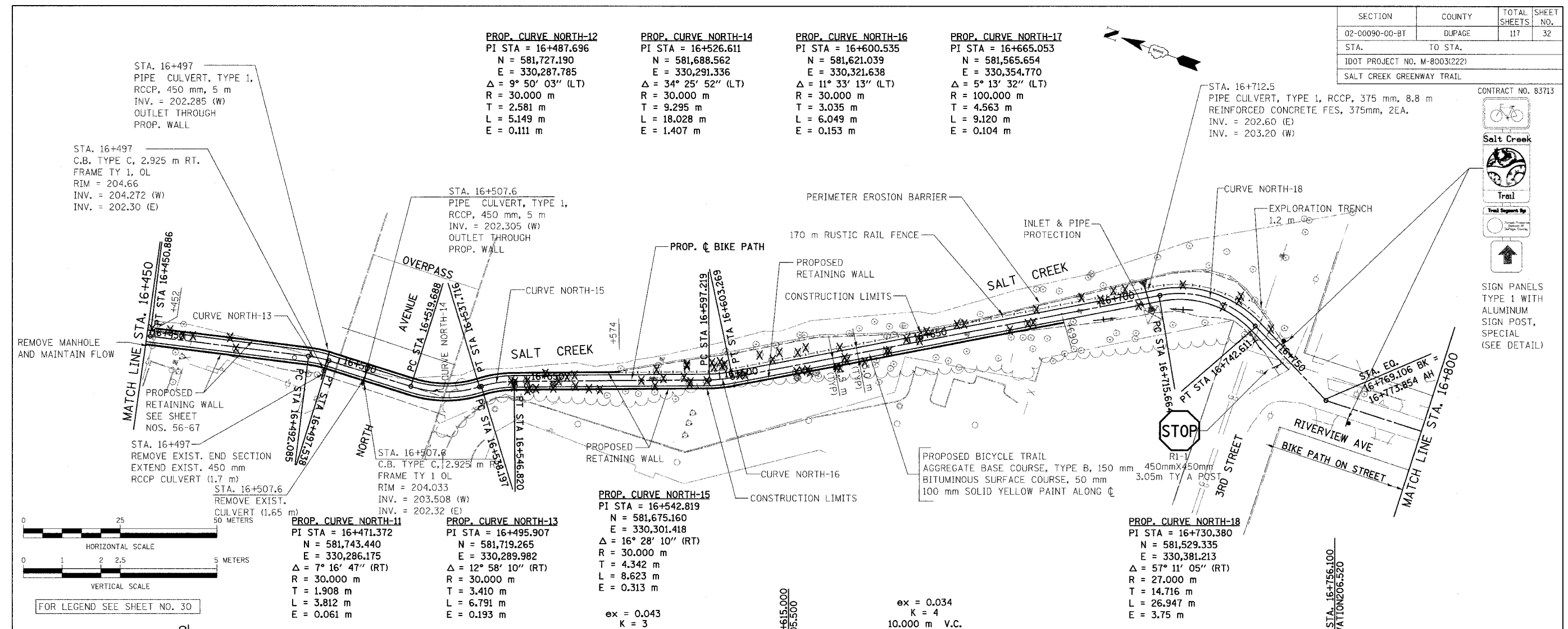


SECTION	COUNTY	TOTAL SHEETS	SHEET NO.
02-0090-00-BT	DUPAGE	117	32
STA.	TO STA.		
IDOT PROJECT NO. M-8003(222)			
SALT CREEK GREENWAY TRAIL			

CONTRACT NO. 83713



SIGN PANELS TYPE 1 WITH ALUMINUM SIGN POST, SPECIAL (SEE DETAIL)



URS 1701 GOLF ROAD, SUITE 1000 TEL (847) 228-0707
 ROLLING MEADOWS, IL 60008 FAX (847) 228-1115

VILLAGE OF ADDISON
SALT CREEK GREENWAY TRAIL
PLAN & PROFILE
 STA. 16+450 TO STA. 16+800

DATE: 10/22/04 DRAWN BY:
 DESIGNED BY: MIA CHECKED BY: DDL

REVISIONS		
NO.	NAME	DATE