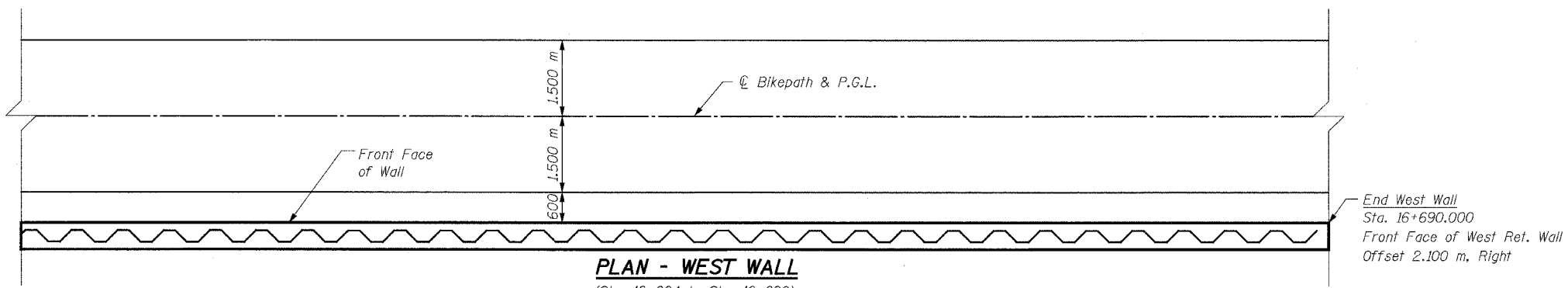
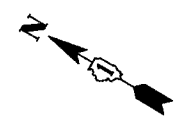
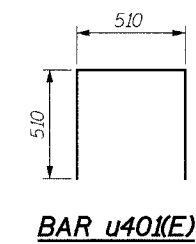
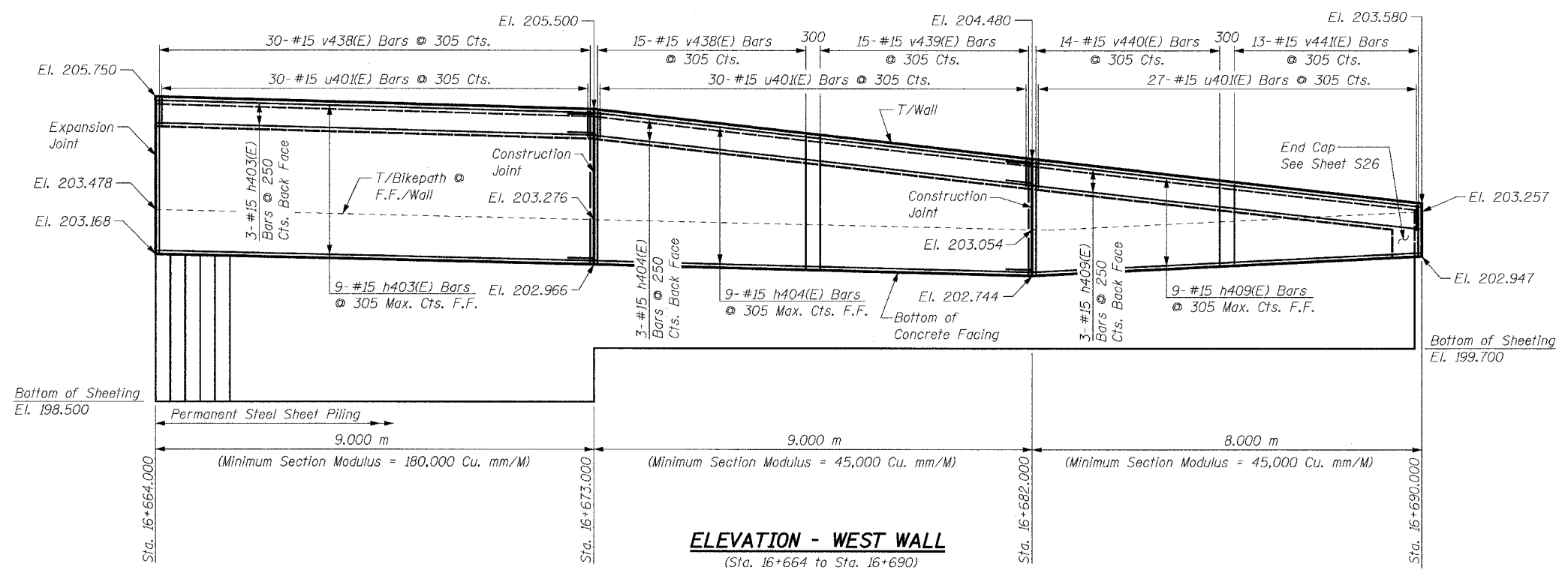


BILL OF MATERIAL

Bar	No.	Size	Length	Shape
h403(E)	12	#15	8.90 m	—
h404(E)	12	#15	9.60 m	—
h409(E)	12	#15	8.60 m	—
u40(E)	92	#15	1.53 m	□
v438(E)	45	#15	2.43 m	—
v439(E)	15	#15	2.03 m	—
v440(E)	14	#15	1.64 m	—
v441(E)	17	#15	1.08 m	—
Concrete Structures			Cu. M	20.4
Reinforcement Bars, Epoxy Coated			kg	1,020
Structure Excavation			Cu. M	14.6
Permanent Steel Sheet Piling			Sq. M	143
Pipe Handrail			Meter	26



End West Wall
Sta. 16+690.000
Front Face of West Ret. Wall
Offset 2.100 m, Right



NOTES:

See Sheet S16 for Notes.

SHEET S25 of S28

REVISIONS		NAME	DATE
NO.	DESCRIPTION		

1701 GOLF ROAD, SUITE 1000
ROLLING MEADOWS, IL 60008

TEL (847) 228-0707
FAX (847) 228-1115

VILLAGE OF ADDISON
SALT CREEK GREENWAY TRAIL
RET. WALL STA. 16+664 TO 16+690
PLAN & ELEVATION

DATE: 11/03/04
DESIGNED BY: MDS

DRAWN BY: MDS
CHECKED BY: GAT